



**25 Moor Street, Coventry - CV5 6EQ**  
**In Excess of £305,000**

# 25 Moor Street

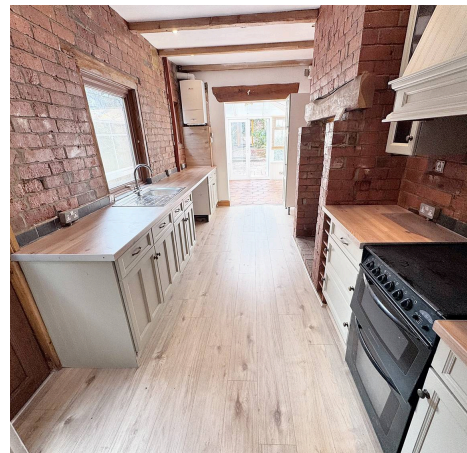
Coventry, Coventry

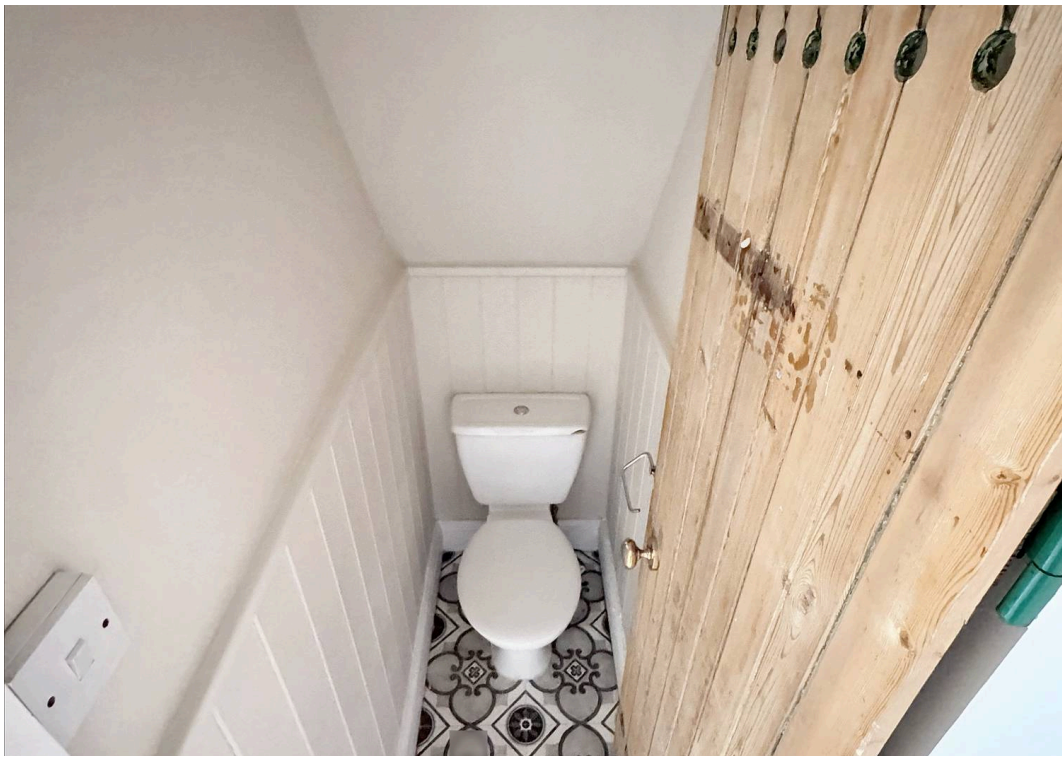
This stunning traditional terraced house offers three bedrooms, cosy lounge, charming dining room, fitted kitchen, sun-soaked conservatory, period features, delightful rear garden, and gas central heating. Perfect for commuters, just 2 minutes from the high street. Enjoy outdoor living with a picturesque garden.

Council Tax band: C

Tenure: Freehold

- Outstanding Traditional Terraced Home
- Set Just A 2 Minute Walk To The Ever Popular High St
- Lovely Lounge
- Dining Room
- Fitted Kitchen Leading To Conservatory
- Ground Floor WC
- Absolutely Stacked With Period & Original Features
- Delightful Rear Garden
- Gas Central Heating - Double Glazing
- EPC TBC & No Chain





**Location**  
Moor Street, Earlsdon

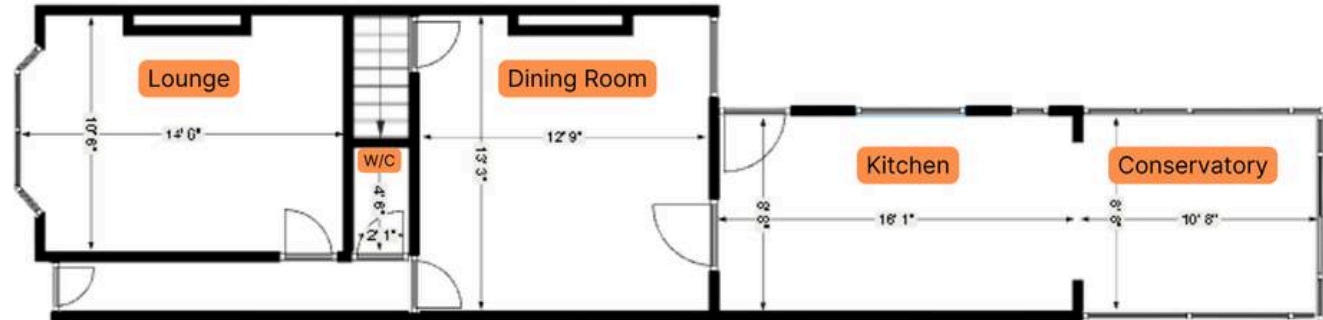
**Details**  
3 bedrooms  
1 bathroom, 1 w/c



**Disclaimer**  
Although every care has been taken, measurements are approximate & no responsibility is taken for error.

Plan is for illustrative purposes only.

### Ground Floor



### First Floor

