



# Parsonage Street

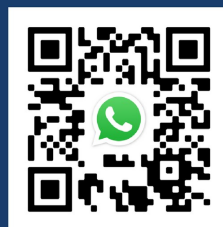
Stockport



£320,000

5 | 2 | 1


SEND US A MESSAGE



**SPENCER HARVEY**

PASSIONATE ABOUT PROPERTY



Energy Efficiency Rating		Current	Potential
Very energy efficient - lower running costs			
(92 plus)	<b>A</b>		
(81-91)	<b>B</b>		<b>82</b>
(69-80)	<b>C</b>		
(55-68)	<b>D</b>	<b>62</b>	
(39-54)	<b>E</b>		
(21-38)	<b>F</b>		
(1-20)	<b>G</b>		
Not energy efficient - higher running costs			
<b>England &amp; Wales</b>		EU Directive 2002/91/EC 	

## PROPERTY DESCRIPTION

Situated in the highly sought-after area of Heaton Norris and enjoying stunning views over Heaton Norris Park, this exceptional five-bedroom family home offers an abundance of beautifully presented living accommodation arranged over three spacious floors.

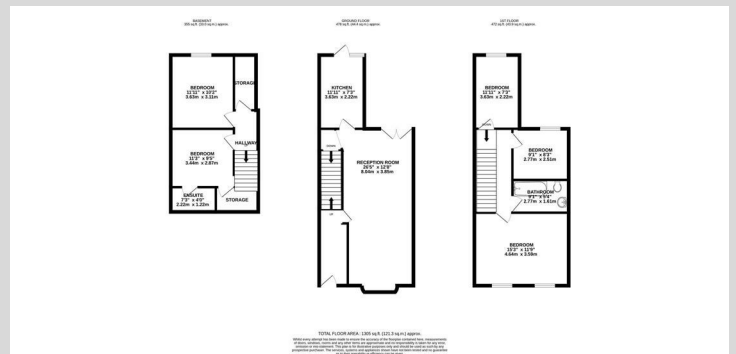
Lovingly renovated and meticulously maintained by the current owners, the property effortlessly blends character features with modern family living. Upon entering, you are welcomed into two generous open-plan reception rooms, creating a fantastic space for both everyday living and entertaining. Feature fireplaces add warmth and charm, whilst patio doors provide direct access to the rear garden, allowing natural light to flood the space.

The lower ground floor has been fully converted to an excellent standard and offers versatile accommodation comprising two spacious double bedrooms, one benefitting from a contemporary en-suite bathroom. This level provides an ideal space for older children, guests, multi-generational living or those working from home.

To the first floor are three further well-proportioned double bedrooms and a stylish family bathroom, all presented to a high standard throughout.

## KEY FEATURES

- Stunning 5 Bedroom Family Home
- Set Over 3 Spacious Floors
- Overlooks Heaton Norris Park
- Fully Converted Basement with 2 Bedroom and En Suite
- 2 Large Open Plan Reception Rooms
- Beautifully Renovated Throughout
- Excellent Storage
- Popular Residential Area



**EPC RATING:**  
**D**

**COUNCIL TAX BAND:**  
**B**

