

Luxury+Prestige

NEWTON RISE

17 NEWTON ROAD, CANFORD CLIFFS, POOLE, BH13 7EX





















TAKE A STEP INSIDE



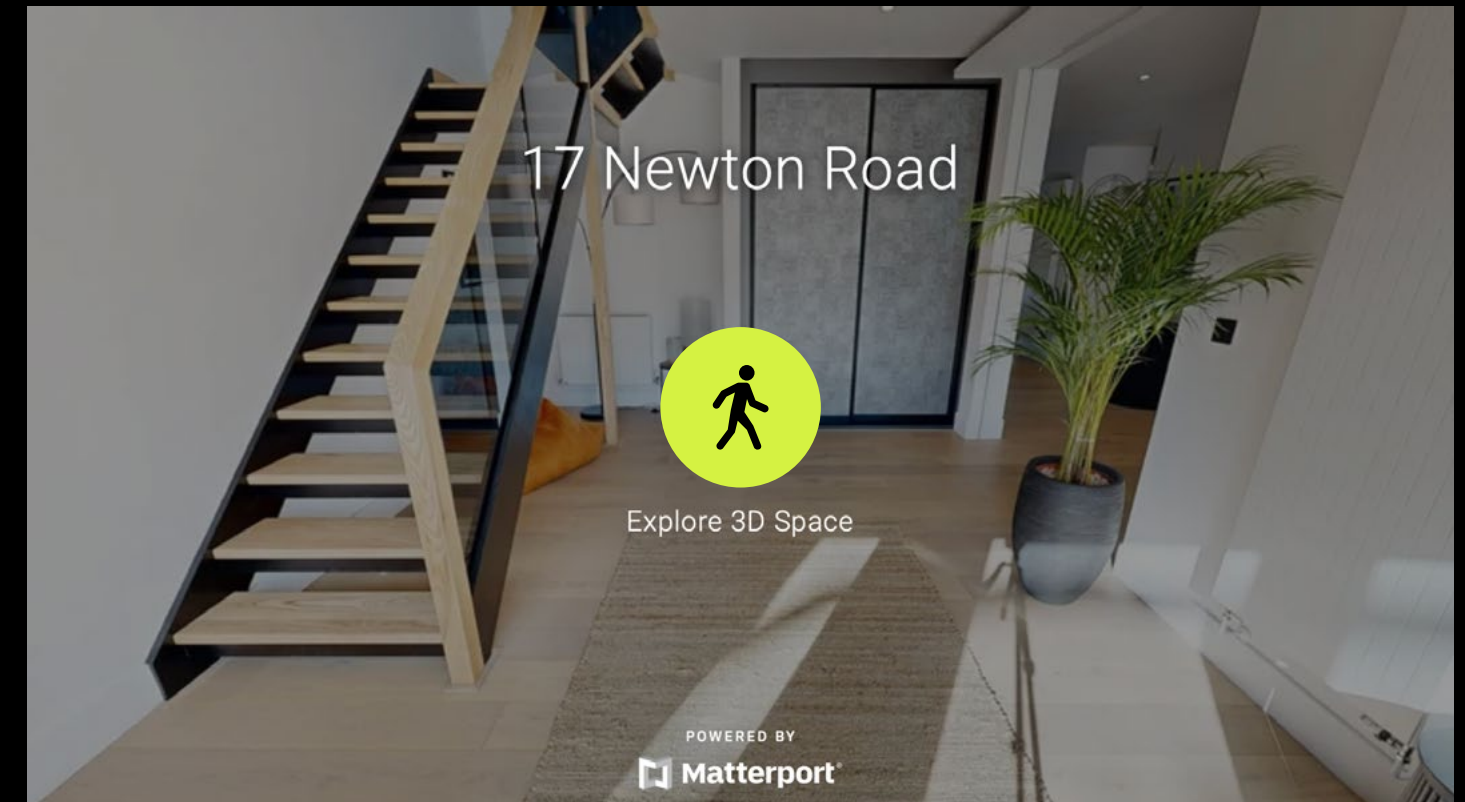
Simply click on the thumbnail above to let one of our team give you a guided tour of the highlights.

If you are longing for a more in-depth explore at your own pace, then head across the page to our fully interactive 3D tour.

vimeo

Can't wait to view in person?

All of our properties feature a professionally produced one minute video, personally introduced by a member of our team as well as a fully interactive 3D tour.



Simply click on the thumbnail above to take a step inside and explore this beautiful home.

This fully immersive experience allows you to 'click and drag' your way through the property at your own pace. It is best viewed on a desktop screen or in landscape mode on your smartphone or tablet.

Matterport™

Floorplan

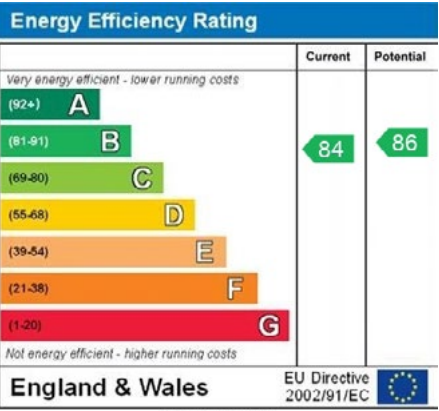
17 Newton Road, Canford Cliffs,
Poole, BH13 7EX

GROSS INTERNAL AREA

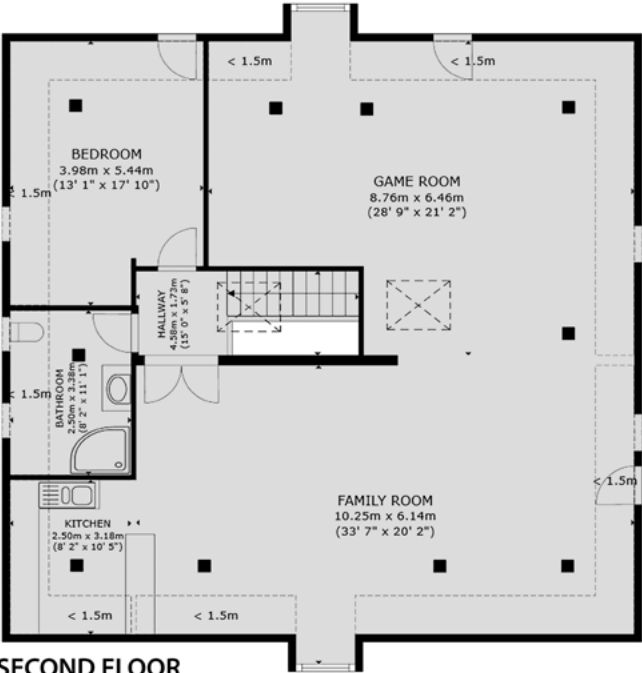
House:
Ground Floor: 2,574 sq. ft / 239 m²
First Floor: 2,233 sq. ft / 207 m²
Second Floor: 1,325 sq. ft / 123 m²
Garage: 415 sq. ft / 39 m²
(Excluded areas, reduced headroom below 1.5m - 378 sq. ft / 35 m²)

Overall Total: 6,547 sq. ft / 608 m²

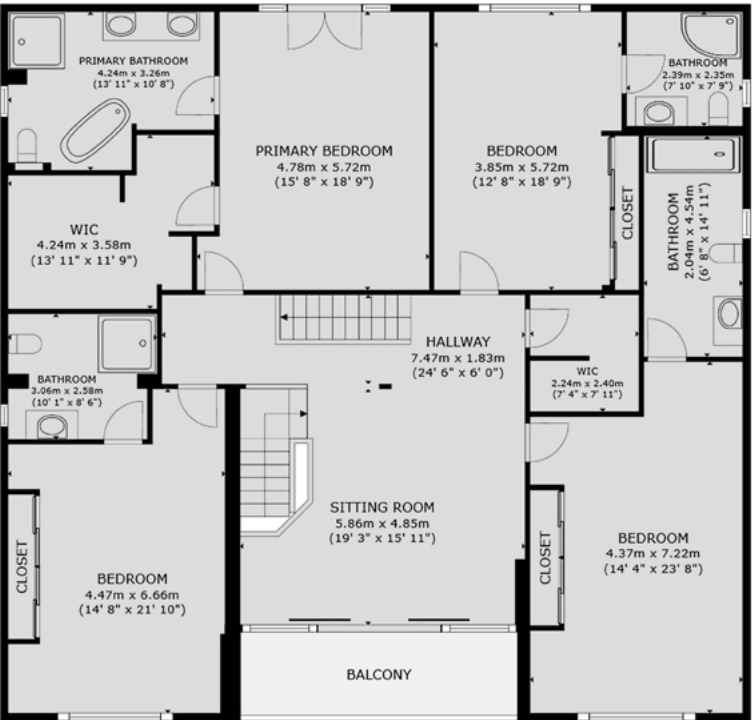
Sizes and dimensions are approximate, actual may vary.



GROUND FLOOR



SECOND FLOOR



FIRST FLOOR

Summary

Newton Rise is a newly completed project with close to £1M invested in remodelling to the current impeccable standard.

It represents a rare opportunity to acquire a beautiful lifestyle home extending to just over 6,900 square feet (including reduced head height). Newton Road is quiet but just a level walk from shops and around 500 metres from Canford Cliffs Chine which leads to some of the area's most beautiful beaches. The accommodation includes five bedrooms, six bathrooms, six receptions and a home office. The flexible layout could be configured to include a ground floor bedroom suite if required. The proportions everywhere are impressive and for those in need of space for friends or family each of the bedrooms is an impressive double and each of them would vie for a principal bedroom in most luxury homes. Most of the top floor is allocated to an entertainment or leisure suite which includes a games area, informal sitting, media space and a dedicated bar. Other features include a first floor sitting area - an ideal quiet space - whilst one of the ground floor receptions is currently used as a gymnasium. The luxurious kitchen boasts a centre island and all mod cons including an instant boiling water tap and an induction hob. The fit out and fixtures everywhere are simply stunning - our photographs tell a story - and outside the level garden boasts a private sun terrace and a dedicated sun deck for a family sized hot tub. Finally there is an oversized integral garage and generous parking on the gated driveway.

Details

Guide Price:	£3,450,000
Tenure:	Freehold
Lease Length:	N/A
Maintenance:	N/A
Ground Rent:	N/A* * Ground Rents can increase over time and advice should always be sought from your solicitor before exchange of contracts.
Stamp Duty:	Main Home £327,750** Additional Home £500,250** ** based on guide price
Local Authority:	BCP Council
Council Tax:	Band G 2025/2026 £3,758.23pa*** *** Amount shown is for a main home, please seek advice for additional home.
Services:	Mains gas, electricity, water and drainage

Key features

- + Newly completed project
- + Over 6,500 square feet
- + Five generous double bedrooms
- + Six bathrooms
- + Six receptions
- + Huge entertaining suite on the top floor
- + Level garden
- + Approx 500 metres from Canford Cliffs Chine
- + Stunning interior
- + Great parking

Our team



Steve Isaacs
Director

07970 878106
steve@luxuryandprestige.com



David Chissell
Director

07795 835647
david@luxuryandprestige.com



Harriet Towing
Head of Sales

07809 908718
harriet@luxuryandprestige.com



Adrianna Ciereszko
Photographer

01202 007373
adrianna@luxuryandprestige.com



Ryan Horan
Land & New Homes

07512 196688
ryan@luxuryandprestige.com



Thomas Powner
Residential Sales

07437 491094
tom@luxuryandprestige.com



Valentina Morana
Residential Sales

07366 799790
valentina@luxuryandprestige.com



Joanne Bound
Search Agent

01202 007373
jbound@luxuryandprestige.com

Get in touch

In person:	28A Haven Road Canford Cliffs Poole BH13 7LP
By phone:	01202 007373
By email:	info@luxuryandprestige.com
Online:	luxuryandprestige.com
Facebook:	facebook.com/luxuryandprestige
Instagram:	@luxuryprestigerealty
Property ref:	0937
Published:	January 2025



Important notice
Luxury and Prestige Realty Ltd, its clients and any joint agents give notice that 1: They are not authorised to make or give any representations or warranties in relation to the property either here or elsewhere, either on their own behalf or on behalf of their client otherwise. They assume no responsibility for any statement that may be made in these particulars. These particulars do not form part of any offer or contract and must not be relied upon as statements or representations of fact. 2: Any areas, measurements or distances are approximate. The text, photographs and plans are for guidance only and are not necessarily comprehensive. It should not be assumed that the property has all necessary planning, building regulation or other consents and Luxury and Prestige have not tested any services, equipment or facilities. Purchasers must satisfy themselves by inspection or otherwise.

Luxury+Prestige

luxuryandprestige.com