



Wyndham Close, Waterloo P8 8HA

welcome to

Wyndham Close, Waterloooville

Two bed semi detached bungalow in sought after Cowplain, set in a quiet dead end road. Lounge, kitchen, two double bedrooms and bathroom. Private landscaped garden, driveway and separate garage. Offered with no forward chain and close to transport links.

Entrance Porch

Via door to side of property. Door to hall.

Hall

Storage cupboard. Doors to:

Living Room

Double glazed window to front aspect. Space for table and chairs, fireplace with hearth and mantel over, carpet flooring, radiator.

Bedroom One

Double glazed window to rear aspect. Carpet flooring, radiator.

Bedroom Two

Double glazed window to front aspect. Carpet flooring, radiator, wardrobe.

Kitchen

Double glazed window to rear aspect. Range of wall and base units with work surface over incorporating sink unit with mixer tap over. Space for washing machine and upright fridge/freezer. Built-in low level oven, gas hob with extractor hood over. Tiled to principal areas, vinyl flooring. Double glazed sliding patio door to rear garden.

Bathroom

Double glazed window to side aspect. Panel enclosed bath with shower over, wash hand basin and low level WC set within vanity unit with enclosed cistern. Vinyl flooring, radiator.

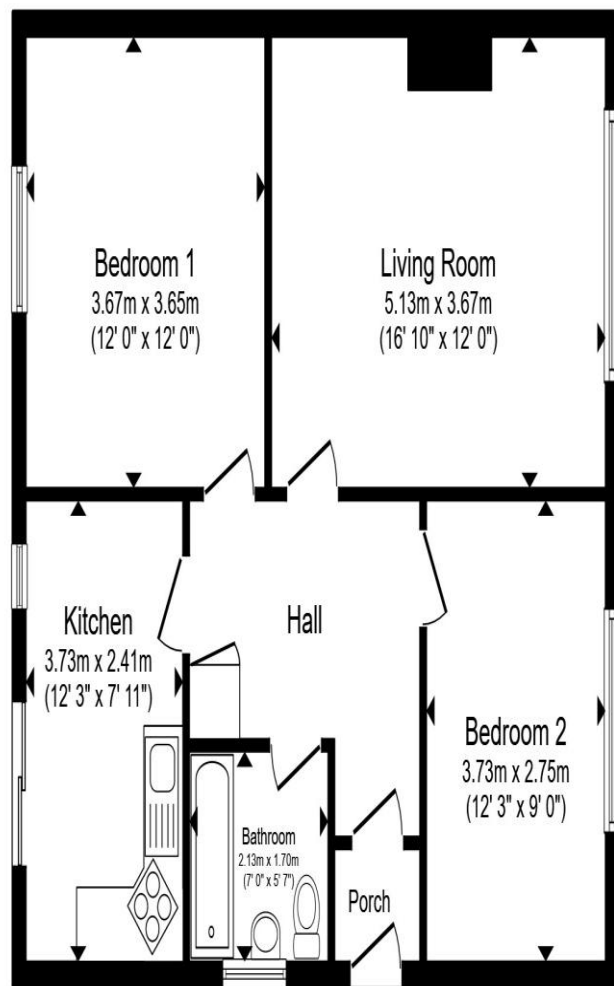
Outside

Front

Laid to lawn with mature shrubs. Driveway, providing off road parking, leading to garage with up and over door, power and light.

Rear Garden

Three steps down from kitchen door. Laid to patio and lawn. Enclosed by panel fencing.



Floor Plan

Total floor area 66.6 m² (717 sq.ft.) approx

This floor plan is for illustrative purposes only. It is not drawn to scale. Any measurements, floor areas (including any total floor area), openings and orientation are approximate. No details are guaranteed, they cannot be relied upon for any purpose and they do not form part of any agreement. No liability is taken for any error, omission or misstatement. A party must rely upon its own inspection(s). Powered by www.propertybox.io



welcome to
Wyndham Close,
Waterlooville

- Semi Detached Bungalow
- Two Double Bedrooms
- Quiet Location
- Off Road Parking
- Separate Garage

Tenure: Freehold EPC Rating: D
Council Tax Band: C

£325,000



view this property online fox-and-sons.co.uk/Property/WLV109574



Property Ref:
WLV109574 - 0002

1. MONEY LAUNDERING REGULATIONS Intending purchasers will be asked to produce identification documentation at a later stage and we would ask for your co-operation in order that there is no delay in agreeing the sale. 2. These particulars do not constitute part or all of an offer or contract. 3. The measurements indicated are supplied for guidance only and as such must be considered incorrect. Potential buyers are advised to recheck measurements before committing to any expense. 4. We have not tested any apparatus, equipment, fixtures or services and it is in the buyers interest to check the working condition of any appliances. 5. Where an EPC, or a Home Report (Scotland only) is held for this property, it is available for inspection at the branch by appointment. If you require a printed version of a Home Report, you will need to pay a reasonable production charge reflecting printing and other costs. 6. We are not able to offer an opinion either written or verbal on the content of these reports and this must be obtained from your legal representative. 7. Whilst we take care in preparing these reports, a buyer should ensure that his/her legal representative confirms as soon as possible all matters relating to title including the extent and boundaries of the property and other important matters before exchange of contracts.

Fox & Sons is a trading name of Sequence (UK) Limited which is registered in England and Wales under company number 4268443, Registered Office is Cumbria House, 16-20 Hockliffe Street, Leighton Buzzard, Bedfordshire, LU7 1GN. VAT Registration Number is 500 2481 05.

fox & sons



023 9226 2447



Waterlooville@fox-and-sons.co.uk



81B London Road, WATERLOOVILLE,
Hampshire, PO7 7ES



fox-and-sons.co.uk