

NEVIN & WELLS

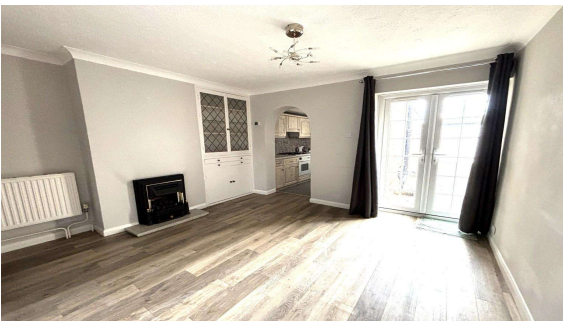
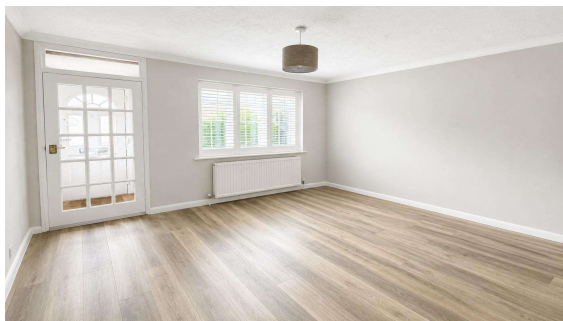
Residential

Established 2002



North Street, Egham, Surrey, TW20 9QX

£450,000 F/H



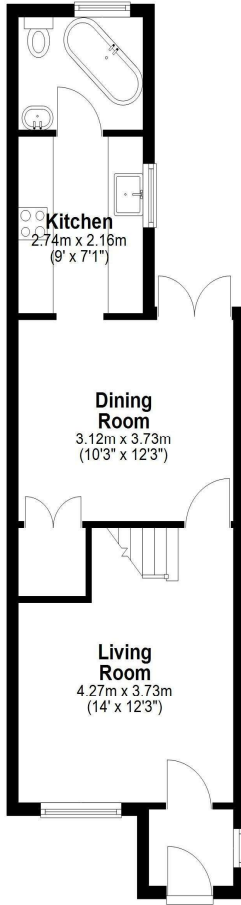
Rarely available is this three bedroom home in central Egham with its own garage and 90ft garden. In addition this property has two receptions and a bathroom on the ground floor. Being sold with no onward chain and situated within five minutes of the mainline station and Magna Square with Everyman cinema, as well as offering easy access to motorways, airports and Windsor Great Park.

North Street, Egham, Surrey, TW20 9QX

FLOOR PLAN

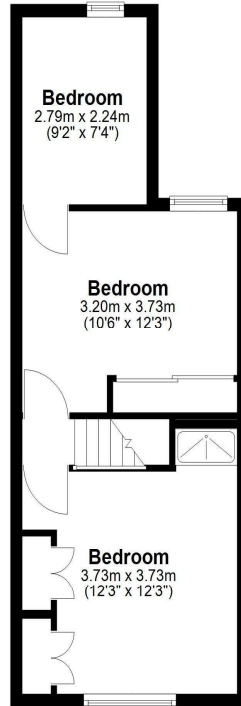
Ground Floor

Approx. 40.0 sq. metres (430.0 sq. feet)



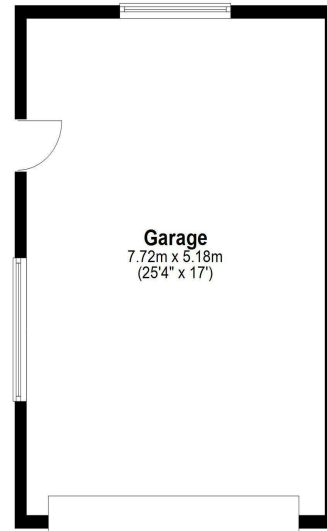
First Floor

Approx. 35.7 sq. metres (384.0 sq. feet)



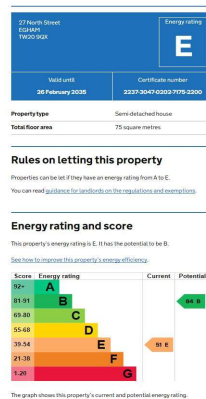
Garage

Approx. 40.0 sq. metres (430.3 sq. feet)



Total area: approx. 115.6 sq. metres (1244.4 sq. feet)

EPC



COUNCIL TAX BAND:

E - Runnymede Borough Council

VIEWINGS:

By appointment with the clients selling agents,
Nevin & Wells Residential on 01784 437 437 or visit
www.nevinandwells.co.uk



All measurements are approximate. Nevin & Wells Residential have not tested any systems or appliances.