




## Milton Road, Waterloo, Liverpool

£304,995 EPC Rating C Council Tax Band B

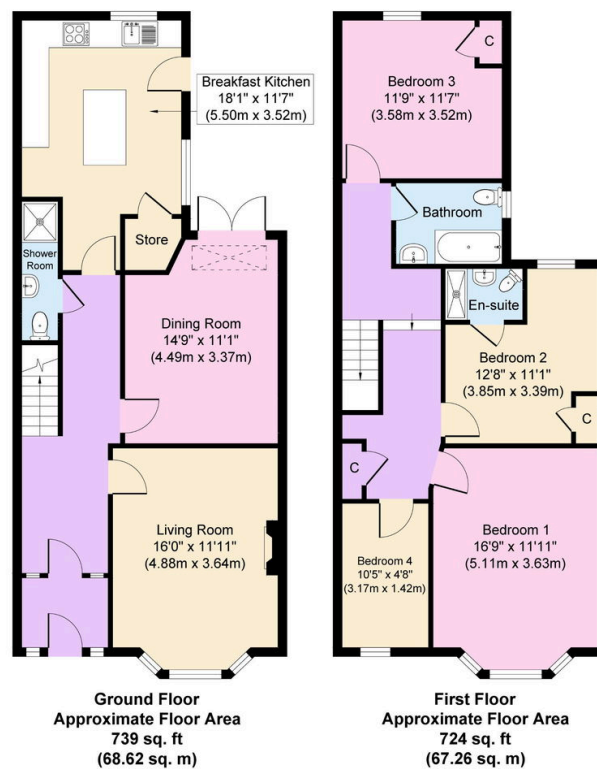
 4  3  2



Stylish, spacious and beautifully presented, this four-bedroom property is ready to impress. Stunning kitchen with a central island and a separate utility room, along with three bathrooms, making it perfect for a growing family. Situated in a sought-after location, just a short stroll to local shops and amenities available, including independent shops and cafes plus beautiful parks and highly regarded schools. Excellent transport links provide quick and convenient access to Liverpool city centre, where entertainment, shopping and nightlife are in abundance. Interior: vestibule, hallway, shower room, living room, sitting room and dining kitchen plus utility on the ground floor. Off the first-floor landing there are the four bedrooms, one with ensuite shower room and family bathroom. Exterior: sunny rear garden. No ongoing chain!

## Key Features

- Four Bed Mid Row Home
- Stylish Kitchen with Utility
- EPC Rating C
- Three Bathrooms
- Council Tax Band B
- No Ongoing Chain



Copyright V360 Ltd 2025 | [www.houseviz.com](http://www.houseviz.com)