



Tyrwhitt Road, SE4

£2,500 Per calendar month

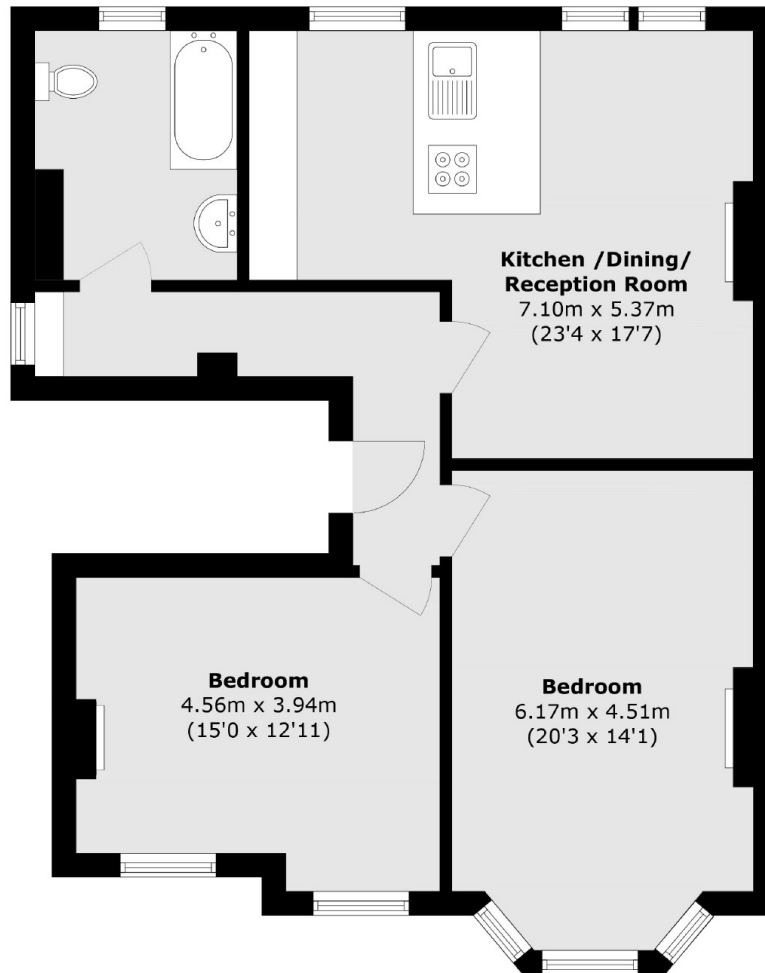
An impressive two double bedroom first floor flat situated within an imposing Victorian building on a prime road in the Brockley Conservation area. Immaculately presented throughout, the large open plan kitchen / reception room is light filled, characterful and retains plenty of original features. The property also benefits your own private section of the garden.

Tyrwhitt Road is a highly sought after road in the Brockley Conservation area with excellent transport links from Brockley Overground, St. John's, Lewisham with the DLR and Ladywell train stations.

Features

- Period Building
- Two Double Bedrooms
- Open Plan Kitchen
- Large Reception
- Brockley Conservation
- Own Section Of Private Garden

Tyrwhitt Road, London, SE4



Total area (approx.): 85.4 sq. m (919.2 sq. ft)