



THEBERTON STREET, ANGEL, N1

4 BED HOUSE - TERRACED

£8,500

SHORT LET INCLUDING ALL BILLS A beautifully presented, newly decorated, mid-terrace four double bedroom house set in the heart of Angel on Theberton Street.

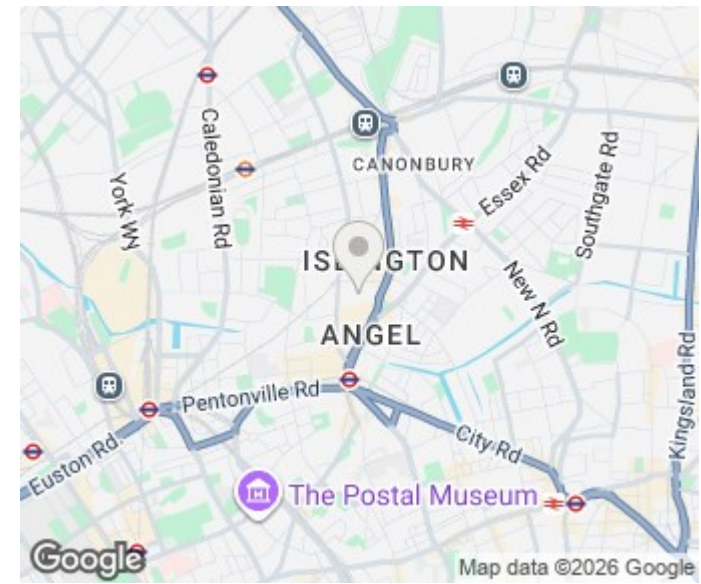
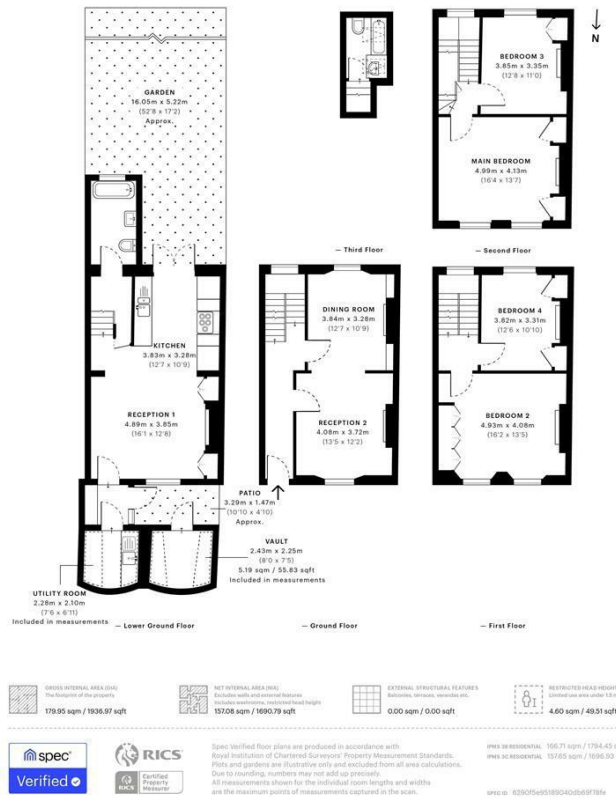
Whilst maintaining its original features and charm but with contemporary fixtures and fittings, the property is well maintained and configured over four floors. Boasting a double reception on the raised ground floor, large open plan kitchen/diner leading out to a private garden, two bathrooms, an abundance of fitted storage and a wealth of natural light.

Conveniently located within a minutes walk to the many amenities Upper Street has to offer and Angel tube station.

Hemmingfords

Theberton Street, N1
 CAPTURE DATE: 31/05/2022 LASER SCAN POINTS: 157759,567

GROSS INTERNAL AREA
 179.95 sqm / 1936.97 sqft



Energy Efficiency Rating		Current	Potential
Very energy efficient - lower running costs			
(92 plus) A			
(81-91) B			
(69-80) C			
(55-68) D			
(39-54) E	50	53	
(21-38) F			
(1-20) G			
Not energy efficient - higher running costs			
England & Wales		EU Directive 2002/91/EC	

Agents Note: Whilst every care has been taken to prepare these particulars, they are for guidance purposes only. All measurements are approximate and are for general guidance purposes only and whilst every care has been taken to ensure their accuracy, they should not be relied upon and potential buyers/tenants are advised to recheck the measurements

Hemmingfords Lettings
 34 Upper Street
 London
 N1 0PN

020 3890 7470
 info@hemmingfords.co.uk
 www.hemmingfords.co.uk

Hemmingfords