



BEAUFORT GREEN



Linver Road, SW6

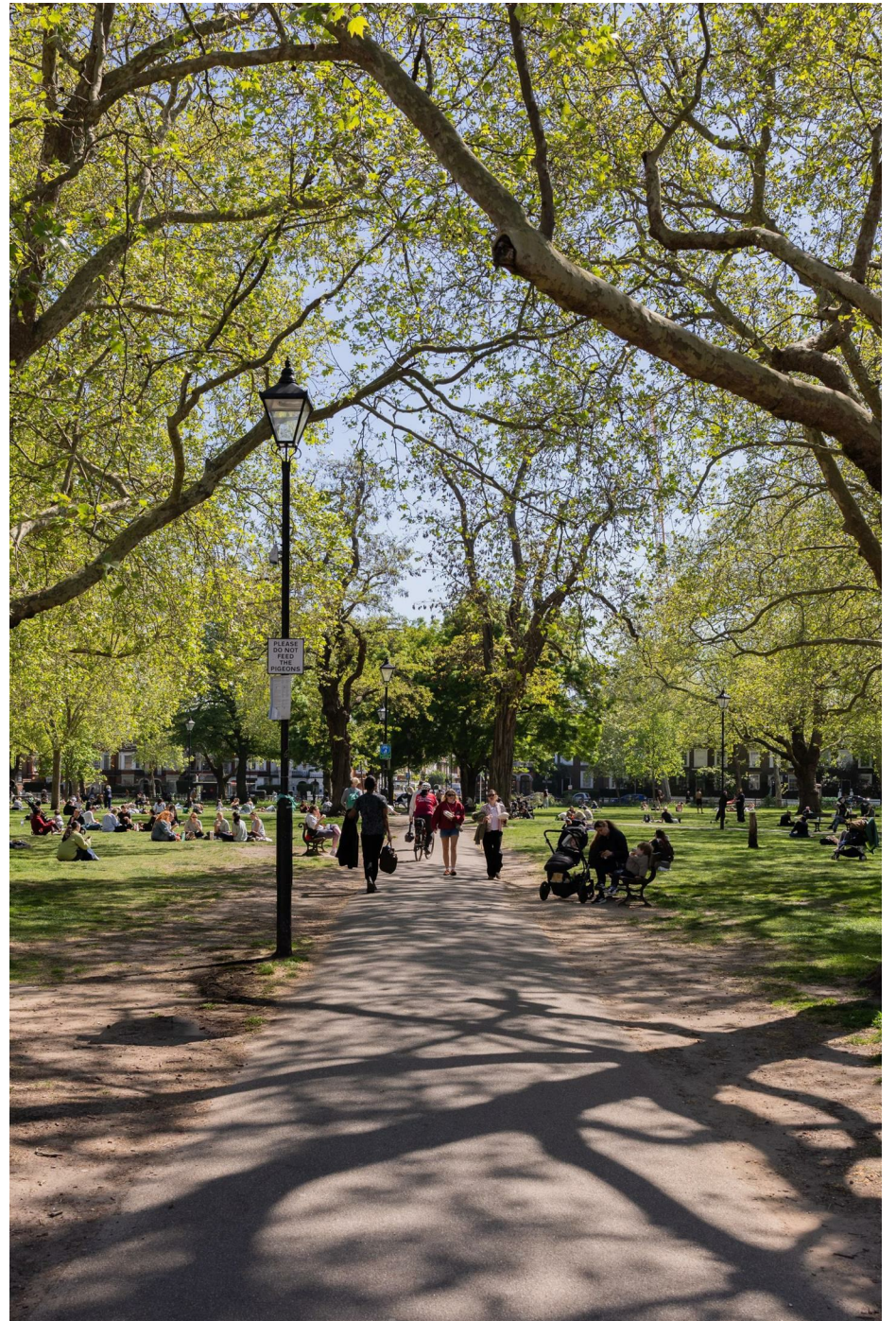
£900,000



Arranged across the upper floors of a period corner building in Parsons Green, this well-proportioned three-bedroom maisonette extends to approximately 1,127 sq ft.

The layout offers a bright reception room, separate kitchen, three bedrooms, a family bathroom and an additional WC. With its own ground floor entrance and accommodation arranged over the first and second floors, the property provides generous space in a well-connected Parsons Green setting.





BEAUFORT GREEN

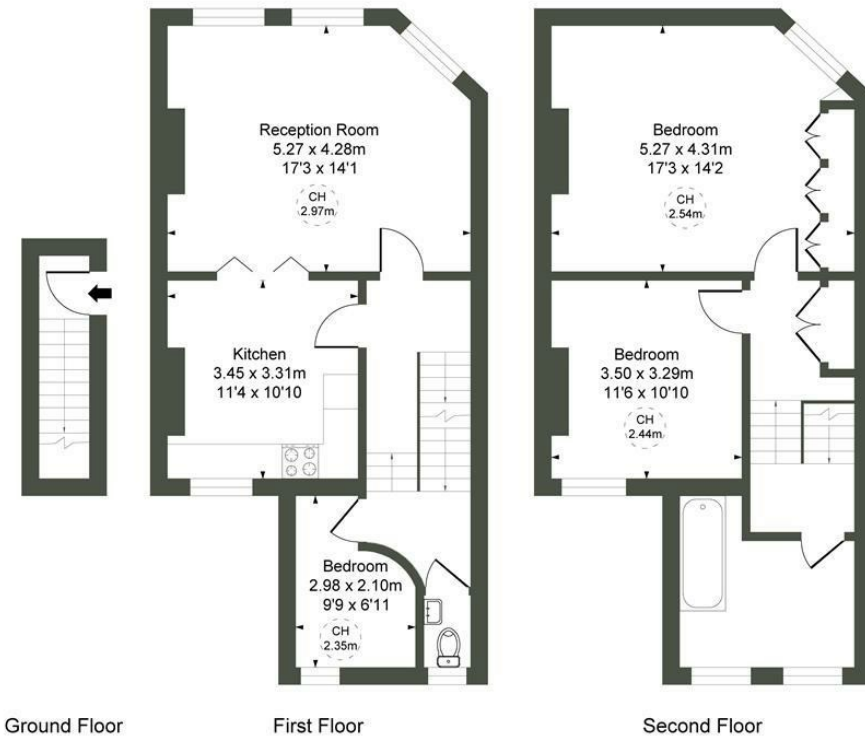


BEAUFORT GREEN

Linver Road,
SW6

GIA
(Approx)

104.70 sqm / 1127 sqft



At a Glance.

- Three-bedroom upper maisonette
- Approximately 1,127 sq ft
- Arranged over first and second floors
- Separate reception room and kitchen
- Family bathroom plus additional WC
- Well-connected Fulham location

CH refers to the ceiling height in this plan. This floor plan is provided for illustrative purposes only and has been prepared in accordance with the RICS Code of Measuring Practice. It is not to scale, and all measurements and areas are approximate and should not be relied upon for accuracy. The plan should not be used for valuation or other decision-making purposes. Whilst every effort has been made to ensure accuracy, no responsibility is accepted for any errors or omissions.

BEAUFORT GREEN

02074594100

charlie@beaufortgreen.co.uk

263 New Kings Road
London
SW16 1DB