



HIVE

2 BIRKDALE COURT
BROADSTONE
BH18 9BE



Agent's introduction

Chain free* *Recently refurbished throughout* *0.5 miles to Broadstone amenities* *Large private south-facing rear garden* *Modern shower room* *Two well proportioned bedrooms* *Plenty of storage* *Garage* *Separate porch way* *Large living/dining roomUtility area*







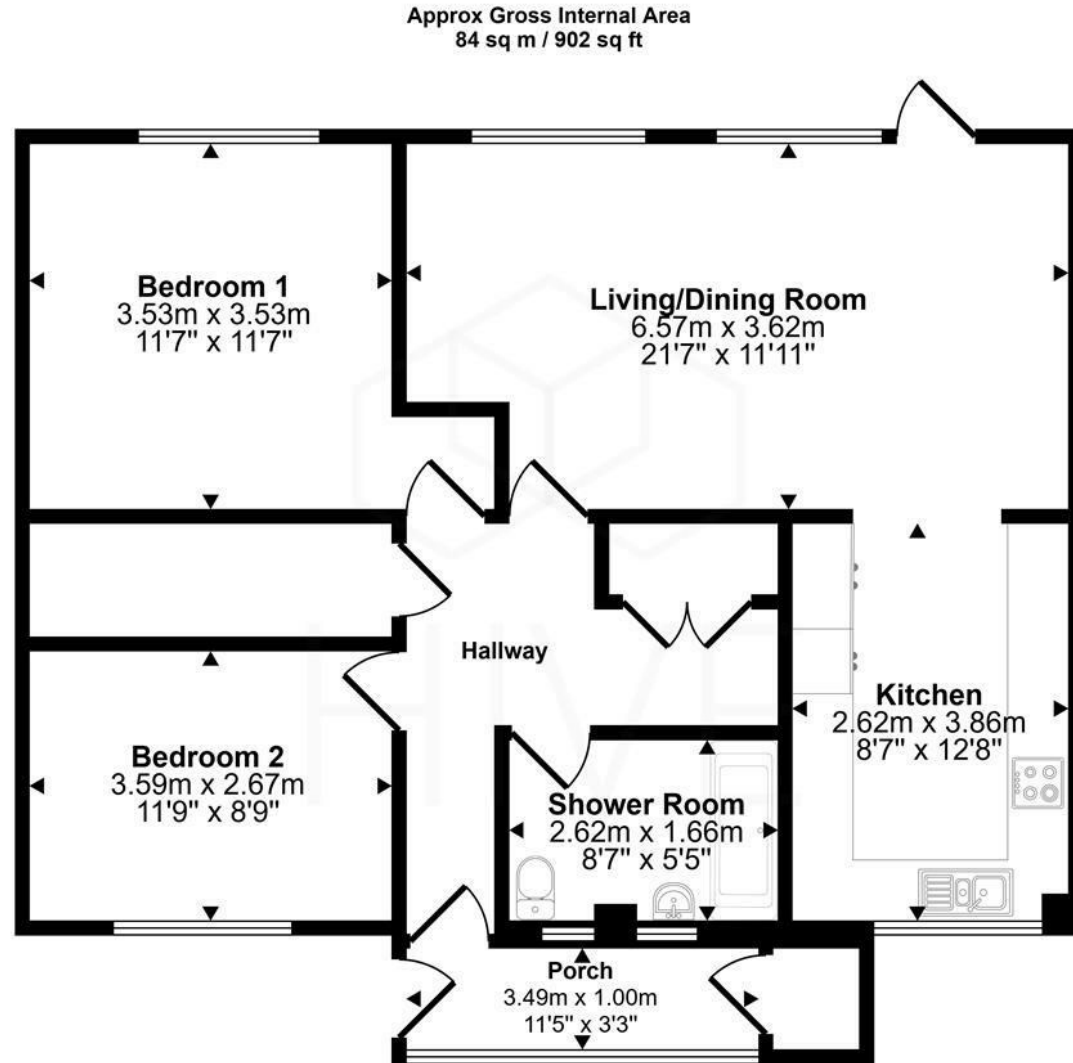
Property highlights

- Fully refurbished throughout
- Private, large south-facing garden
- Two spacious bedrooms with new carpets
- Garage, shed, and side gate access
- Located in the popular location of Broadstone with excellent local amenities
- Modern bathroom with walk-in shower and heated mirror
- New kitchen with Miele appliances and oak shelving



Floor plan and EPC

| Energy Efficiency Rating | | |
|---|-------------------------|-----------|
| | Current | Potential |
| Very energy efficient - lower running costs | | |
| (92 plus) A | | |
| (81-91) B | | |
| (69-80) C | 70 | 77 |
| (55-68) D | | |
| (39-54) E | | |
| (21-38) F | | |
| (1-20) G | | |
| Not energy efficient - higher running costs | | |
| England & Wales | EU Directive 2002/91/EC | |



Floorplan

This floorplan is only for illustrative purposes and is not to scale. Measurements of rooms, doors, windows, and any items are approximate and no responsibility is taken for any error, omission or mis-statement. Icons of items such as bathroom suites are representations only and may not look like the real items. Made with Made Snappy 360.





HIVE & Partners Unit F1, Arena Business Centre 9 Nimrod Way, Ferndown, BH21 7UH
01202 122 002 | www.hiveandpartners.co.uk | sales@hiveandpartners.co.uk