





# 28 Stanmore Crescent

Lanark

Beautifully presented and recently extended, three bedroom link-detached villa situated near the end of a popular cul-de-sac within the market town of Lanark. The current owners have greatly enhanced the property with a spacious extension to the rear.

The property is entered from the side into a spacious entrance hallway. The lounge benefits from a floor to ceiling window which provides excellent natural light with stylish shutters. An electric flame effect fire set within a newly constructed media wall providing a focal point to the room. The extended dining kitchen provides the home with a real touch of style offering buyers a beautifully crafted open plan living space with central island and ample base and wall mounted storage with quality appliances. From here a door gives access to the rear garden.

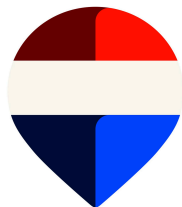
On the first floor there are three bedrooms and a recently fitted family bathroom with suite comprising, W.C, wash hand basin and bath with shower over.

Externally the front garden has been laid to create a double driveway and giving access to a single garage which has been portioned to create a dog kennel at the rear.

The rear garden has been beautifully landscaped to be low-maintenance with a paved patio, artificial lawn and dog run to the rear.

The property further benefits from gas central heating and double glazing.

- Link-detached Villa
- Three Bedroom
- Single Garage
- Low Maintenance Rear Garden
- Popular Location







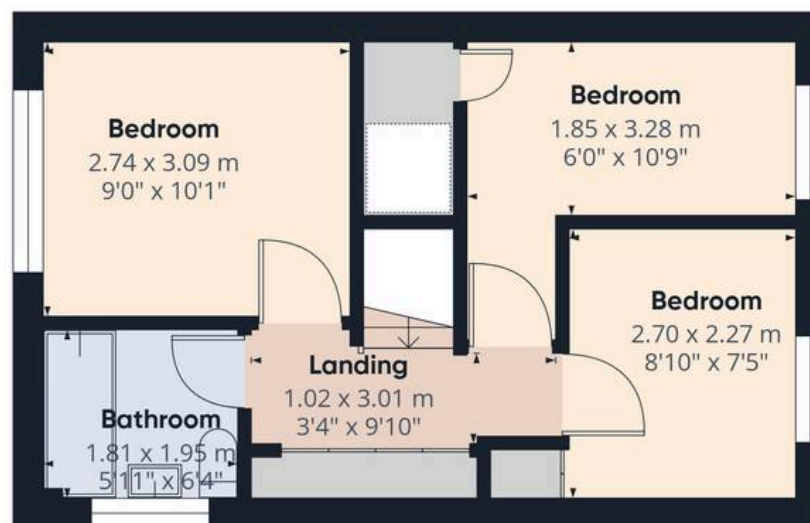


Floor 0 Building 1

Approximate total area<sup>(1)</sup>

78 m<sup>2</sup>

839 ft<sup>2</sup>



Floor 1 Building 1

(1) Excluding balconies and terraces

Calculations reference the RICS IPMS 3C standard. Measurements are approximate and not to scale. This floor plan is intended for illustration only.

GIRAFFE360







## REMAX Clydesdale

Remax, 2 High Street - ML11 7EX

01555 666990

[lanark@remax-scotland.homes](mailto:lanark@remax-scotland.homes)

[www.remax-scotland.homes/estate-agents/clydesdale](http://www.remax-scotland.homes/estate-agents/clydesdale)

These particulars are prepared by us on the basis of information provided by our clients. We have not tested the electrical system, appliances or heating system. All sizes are recorded by laser to give an indicative, approximate size only. Prospective purchasers should make their own enquiries, no warranty is given or implied. This schedule is not intended to, and does not form any contract. Anti-Money Laundering Regulations - Purchasers will be asked to produce identification documentation at a later stage and we would ask for your co-operation in order that there will be no delay in agreeing the sale. NOTING INTEREST If you are interested in this property please ask your solicitor to notify us. This is referred to as "noting interest" and will ensure that you are informed of any