



## Rainhill Way, E3

£2,300 Per week

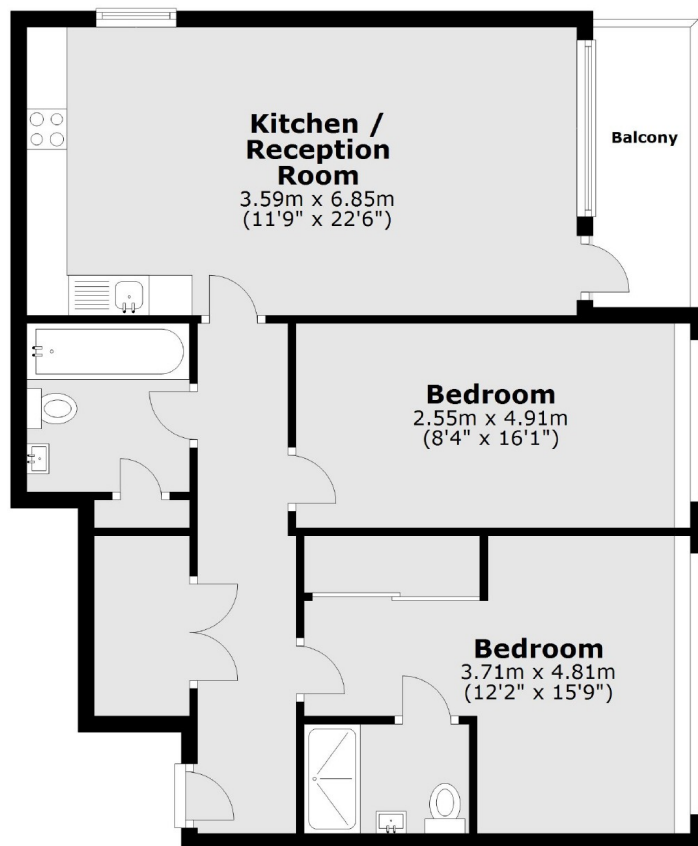
A large two double bedroom apartment in the ever popular Mallard Point development. This property is available furnished and has two equally sized double bedrooms, an open plan reception, private balcony and an on site concierge.

Amazing location close to Bow Road Station, Mile End, Victoria Park and Stratford for all local shops, bars and restaurants.

### Features

- Two Double Bedroom
- Two Bathroom
- Open Plan
- Wooden flooring
- Balcony
- Concierge

Rainhill Way,  
London, E3



Main area: Approx. 72.4 sq. metres (779.0 sq. feet)  
Plus balconies, approx. 4.7 sq. metres (50.8 sq. feet)