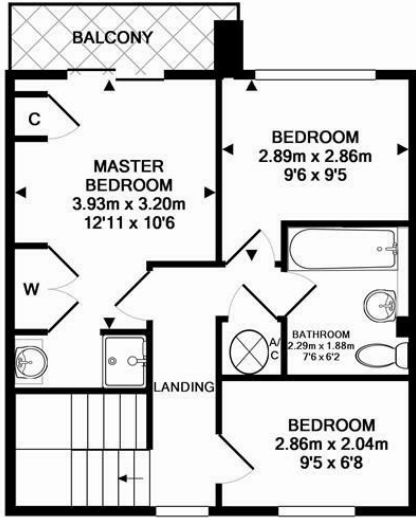
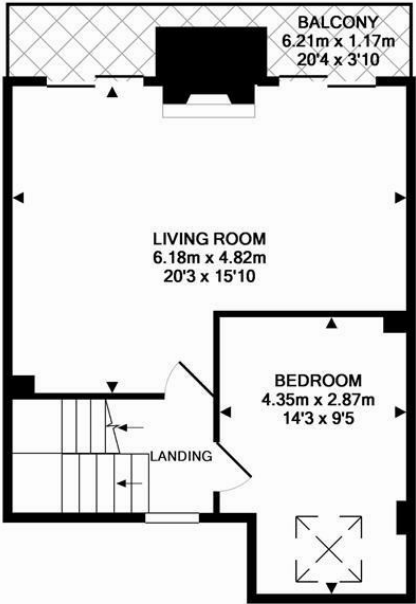


**14 Swan Drive  
Trowbridge, BA14 8US  
£375,000**

Three storey townhouse overlooking the Marina with comfortable living spaces. 3 Balconies overlooking the Marina. Garage & driveway parking.

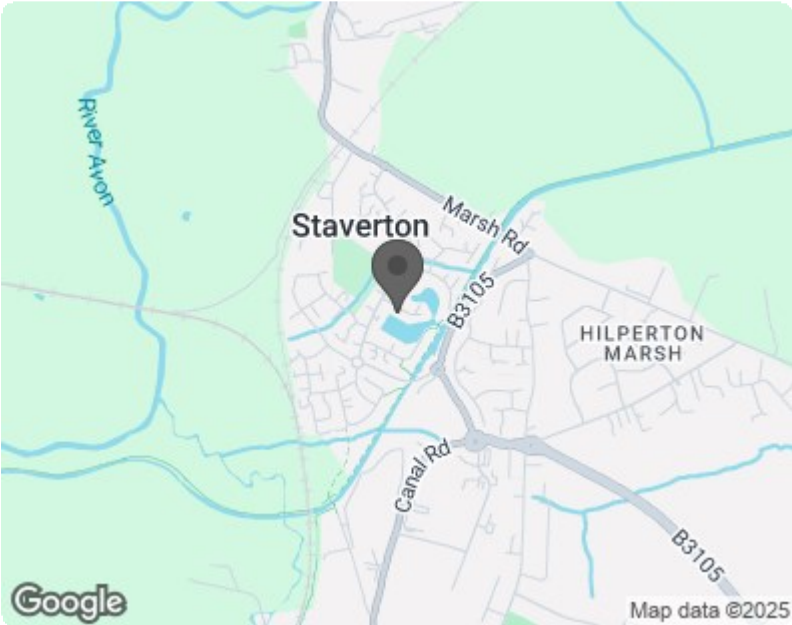




TOTAL APPROX. FLOOR AREA 133.9 SQ.M. (1441 SQ.FT.)

Whilst every attempt has been made to ensure the accuracy of the floor plan contained here, measurements of doors, windows, rooms and any other items are approximate and no responsibility is taken for any error, omission, or mis-statement. This plan is for illustrative purposes only and should be used as such by any prospective purchaser. The services, systems and appliances shown have not been tested and no guarantee as to their operability or efficiency can be given

Made with Metropix ©2014



| Energy Efficiency Rating                    |                         |           |
|---|-------------------------|-----------|
|   | Current                 | Potential |
| Very energy efficient - lower running costs |                         |           |
| (92 plus) <b>A</b>                          |                         |           |
| (81-91) <b>B</b>                            |                         |           |
| (69-80) <b>C</b>                            |                         |           |
| (55-68) <b>D</b>                            |                         |           |
| (39-54) <b>E</b>                            |                         |           |
| (21-38) <b>F</b>                            |                         |           |
| (1-20) <b>G</b>                             |                         |           |
| Not energy efficient - higher running costs |                         |           |
| <b>England &amp; Wales</b>                  | EU Directive 2002/91/EC |           |

| Environmental Impact (CO <sub>2</sub> ) Rating                  |                         |           |
|---|-------------------------|-----------|
|   | Current                 | Potential |
| Very environmentally friendly - lower CO <sub>2</sub> emissions |                         |           |
| (92 plus) <b>A</b>  |                         |           |
| (81-91) <b>B</b>  |                         |           |
| (69-80) <b>C</b>  |                         |           |
| (55-68) <b>D</b>  |                         |           |
| (39-54) <b>E</b>  |                         |           |
| (21-38) <b>F</b>  |                         |           |
| (1-20) <b>G</b>   |                         |           |
| Not environmentally friendly - higher CO <sub>2</sub> emissions |                         |           |
| <b>England &amp; Wales</b>                                      | EU Directive 2002/91/EC |           |