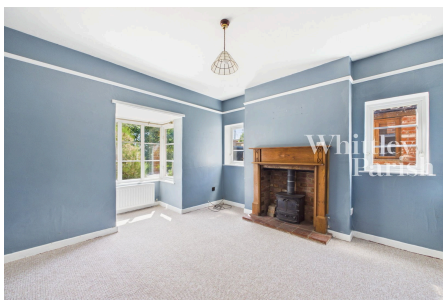


Blo Norton Road, South Lopham, Diss IP22 2HT

Guide Price £375,000 - £400,000



A charming detached three-bedroom Victorian home dating back to the mid-1800s, ideally situated in the highly sought-after village of South Lopham. Originally serving as the headmaster's residence for the neighbouring school, the property now offers a wonderful blend of character, heritage, and period charm.

Key Features

- Guide Price £375,000 - £400,000
- Private courtyard garden
- Two reception rooms
- Period features throughout
- EPC Rating E
- No onward chain
- Off-road parking
- Outbuilding with electric, perfect for home office
- Three good sized bedrooms
- Council Tax Band D

