



Nesfield Grove, Hampton-in-Arden

- Quiet Cul-De-Sac
- Lounge & Seperate Dining Room/Garden Room
- Master Bedroom With En Suite Bathroom
- Rear Garden
- Gas Central Heating (Underfloor Downstairs, Radiators Upstairs)
- Entrance Hallway With Guest WC
- Fitted Kitchen With Appliances
- Three Further Bedrooms & Main Family Bathroom
- Garage + Multiple Off-Road Parking
- Total Floor Area Approx 1,485 Sq Ft

Guide Price £600,000



Nesfield Grove, Hampton-In-Arden, Solihull, B92 0BQ

DESCRIPTION

Situated in the tranquil cul-de-sac of Nesfield Grove, Hampton-In-Arden, this charming detached house offers a perfect blend of comfort and modern living. With four spacious bedrooms, including a well-appointed en suite and main family bathroom, this property is ideal for families seeking both space and privacy.

Upon entering, you are greeted by two inviting reception rooms, perfect for entertaining guests or enjoying quiet family evenings. The lounge provides a warm and welcoming atmosphere, while the second reception room can serve as a dining room/garden room or playroom/study, catering to your lifestyle needs.

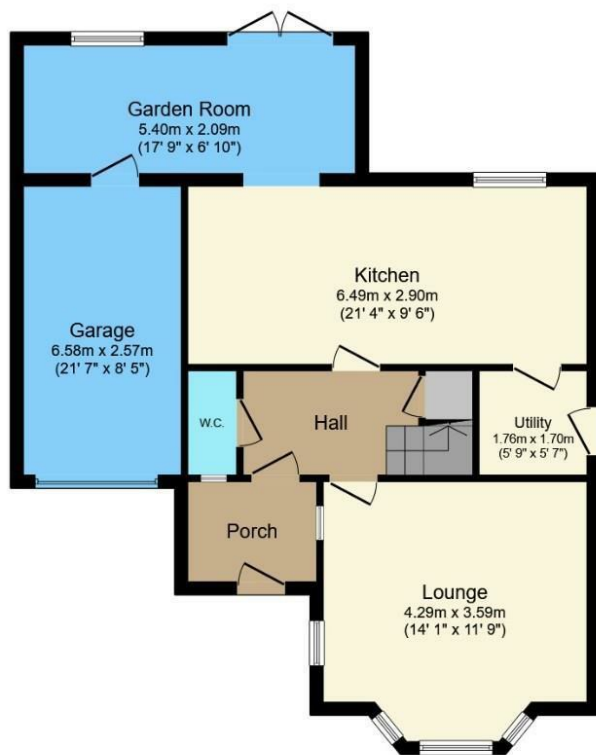
The kitchen is equipped with essential appliances, making it a delightful space for culinary enthusiasts. It flows seamlessly into the dining area, creating an open and airy environment for family meals and gatherings.

Outside, the rear garden offers a peaceful retreat, ideal for summer barbecues or simply unwinding after a long day. Additionally, the garage and off-road parking provide ample space for vehicles, enhancing the practicality of this lovely home.

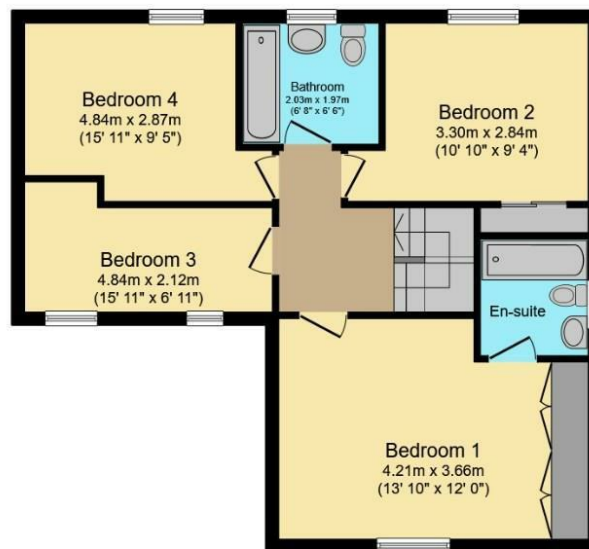
This detached house in Hampton-In-Arden is not just a property; it is a place where memories can be made. With its desirable location and thoughtful layout, it presents an excellent opportunity for those looking to settle in a serene yet accessible area. Do not miss the chance to make this delightful house your new home.







Ground Floor



First Floor

Total floor area 138.0 sq.m. (1,485 sq.ft.) approx

This floor plan is for illustrative purposes only. It is not drawn to scale. Any measurements, floor areas (including any total floor area), openings and orientation are approximate. No details are guaranteed, they cannot be relied upon for any purpose and they do not form part of any agreement. No liability is taken for any error, omission or misstatement. A party must rely upon its own inspection(s).

Powered by www.focalagent.com

Viewings

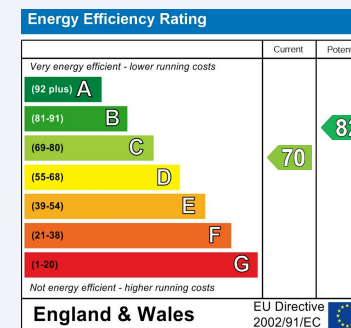
Please contact knowlesales@hunters.com, if you wish to arrange a viewing appointment for this property or require further information.

Valuations

For a valuation of your property, please email the team with your property details, contact information and the times you are available.

ENERGY PERFORMANCE CERTIFICATE

The energy efficiency rating is a measure of the overall efficacy of a home. The higher the rating the more energy efficient the home is and the lower the fuel bills will be.



These particulars are intended to give a fair and reliable description of the property but no responsibility for any inaccuracy or error can be accepted and do not constitute an offer or contract. We have not tested any services or appliances (including central heating if fitted) referred to in these particulars and the purchasers are advised to satisfy themselves as to the working order and condition. If a property is unoccupied at any time there may be reconnection charges for any switched off/disconnected or drained services or appliances - All measurements are approximate.

THINKING OF SELLING? If you are thinking of selling your home or just curious to discover the value of your property, Hunters would be pleased to provide free, no obligation sales and marketing advice. Even if your home is outside the area covered by our local offices we can arrange a Market Appraisal through our national network of Hunters estate agents.



1626 High Street, Knowle, B93 0JU
 Tel: 01564 770707 Email: knowlesales@hunters.com <https://www.hunters.com>

