



## Beaufort Street, SW3

£4,150 Per week

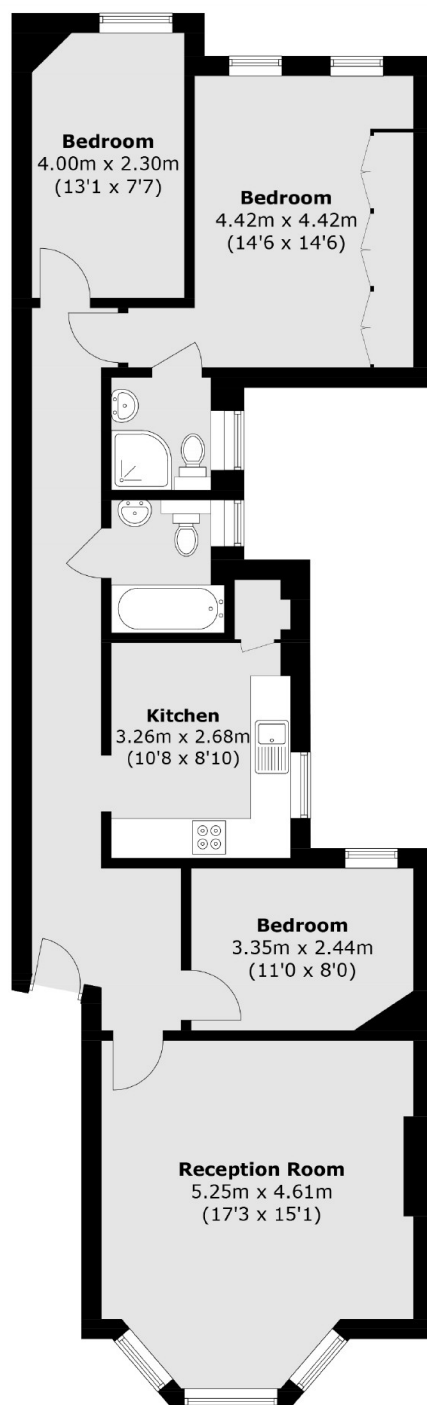
A three bedroom, two bathroom lateral flat arranged over the first floor of a red brick mansions block on Beaufort Street. The flat is perfect for a family with access to communal gardens to the rear.

Beaufort Mansions is located on Beaufort Street. Battersea Park and the Kings Road are both a short distance away allowing plenty of places to eat, shop and unwind.

### Features

- First Floor
- Three Bedroom
- Eat In Kitchen
- Communal Gardens
- Red Brick Mansion Block
- Two Bathroom

# Beaufort Street, London, SW3



Total area (approx.): 89.4 sq. m (962.3 sq. ft)