



Anerley Road, SE20

£250,000

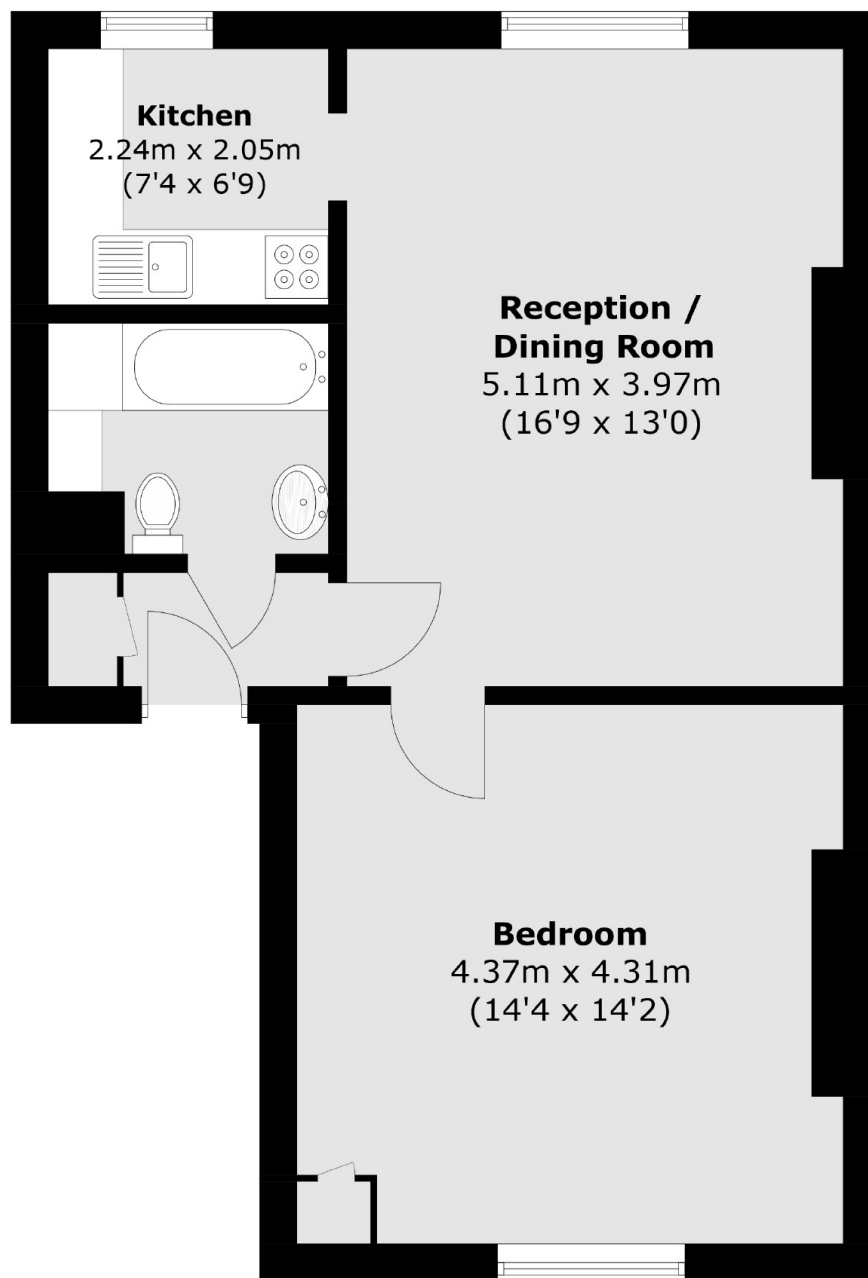
A bright and well presented one bedroom flat comprising of a spacious lounge, separate kitchen, bathroom and large bedroom. Located within walking distance to Anerley and Crystal Palace Stations.

Anerley Road is located just a short walk away from Anerley & Crystal Palace stations and offer regular services into London Bridge. Crystal Palace Park is nearby with its National Sports Centre and offer Olympic size swimming pool and running track.

Features

- One Bedroom
- Spacious Lounge
- Separate Kitchen
- Long Lease
- Close To Stations
- Chain Free

Anerley Road,
London, SE20



Total area (approx.): 52.2 sq. m (561.9 sq. ft)