

# Frank Harris & Co.



## Great Suffolk Street, SE1

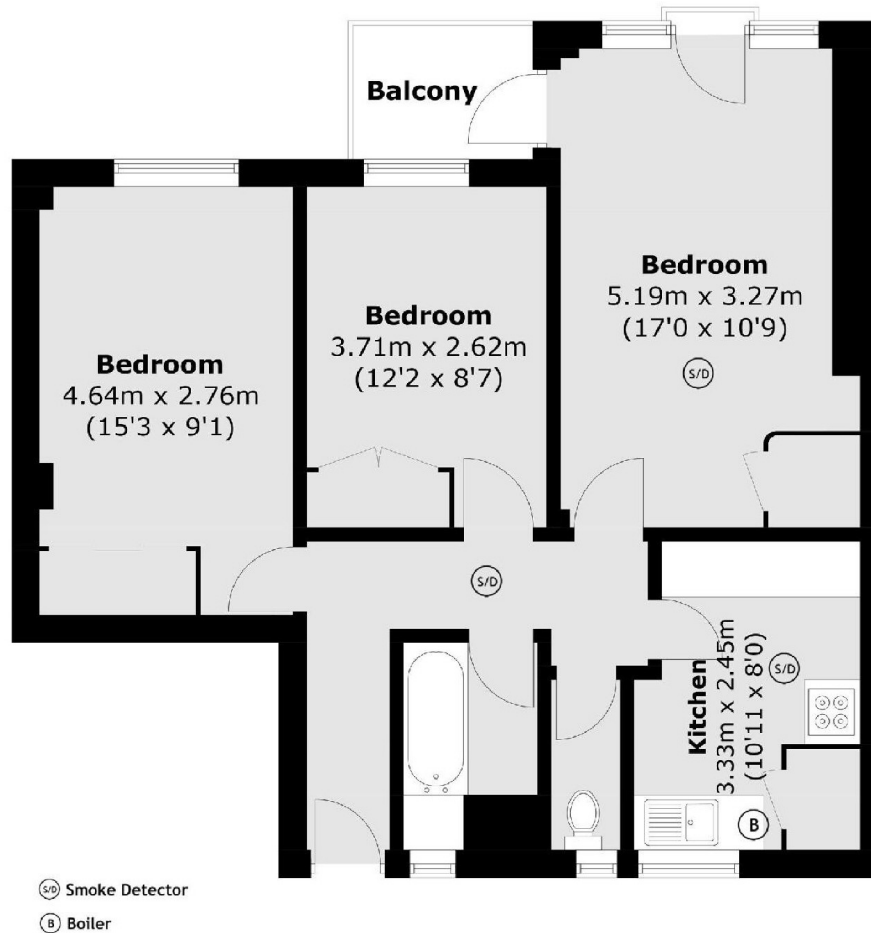
£2,850 pcm

A three bedroom apartment with private balcony no reception, wood flooring and separate kitchen. With secure entry and available for students.

Collinson Court is located in Borough, 0.3 miles from Borough Station. Popular with the locals is the bakery Mustard which is a family run bakery and sandwich shop operating for over 25 years.

- Three Double Bedrooms • One Bathroom • Furnished •
- Fifth Floor • Separate Kitchen • Private Balcony •

# Frank Harris & Co.



Total area (approx.): 61.9 sq. m (666.2 sq. ft)  
Balcony Area : 2.8 sq. m (30.1 sq. ft)

Frank Harris & Co. South Bank and Waterloo  
123 Stamford Street, London,  
SE1 9NN  
020 7590 7100  
[southbanklettings@frankharris.co.uk](mailto:southbanklettings@frankharris.co.uk)

Energy Rating: . We aim to make our particulars both accurate and reliable. However they are not guaranteed; nor do they form part of an offer or contract. If you require clarification on any points then please contact us, especially if you're traveling some distance to view. Please note that appliances and heating systems have not been tested and therefore no warranties can be given as to their good working order.

