



2 Bolander Grove | Hammersmith | LONDON | SW6 1EY

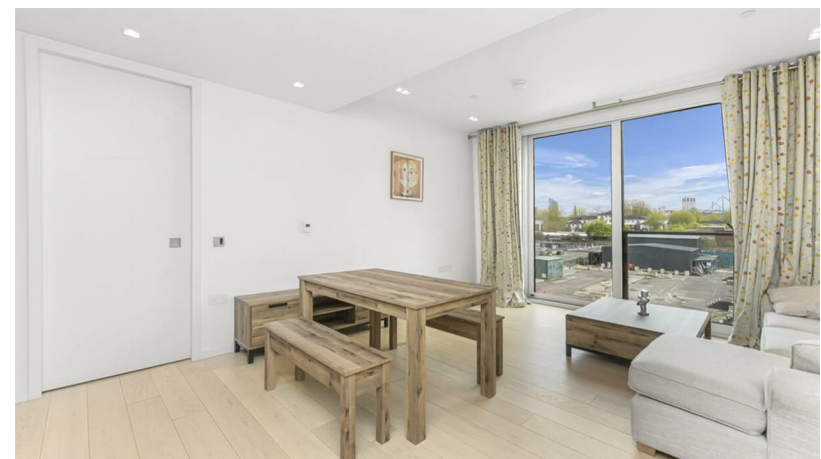
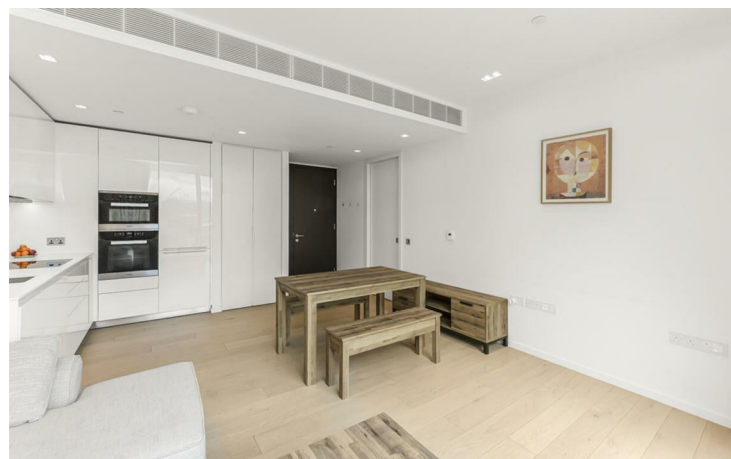
£2,700 Per Calendar Month

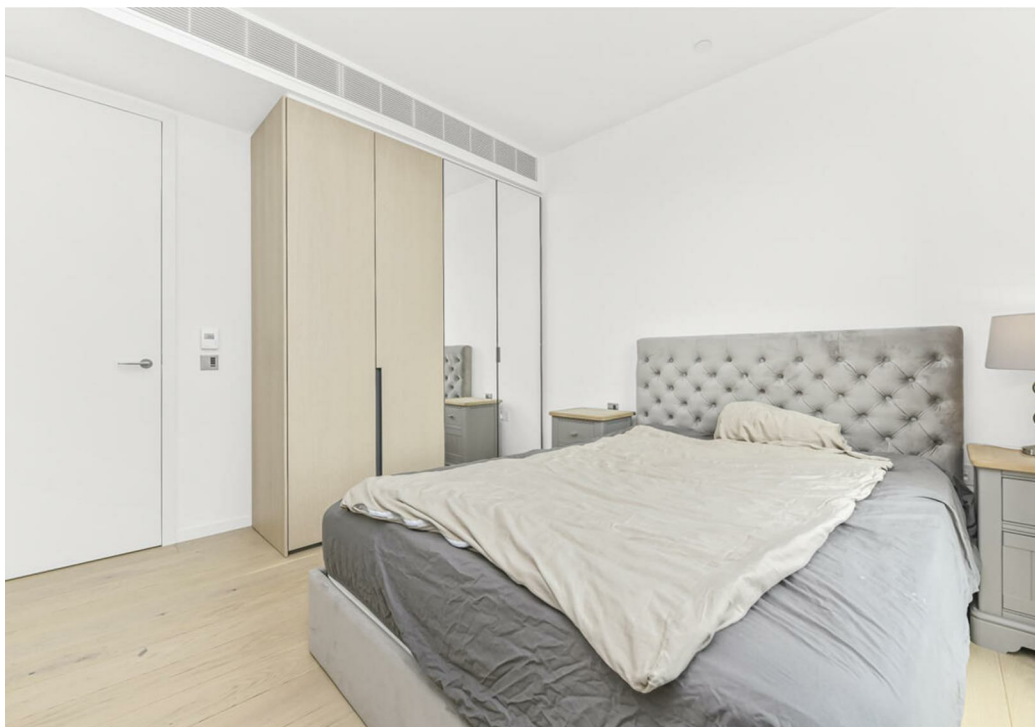
**ICON**  
RESIDENTIAL

2 Bolander Grove | Hammersmith  
LONDON | SW6 1EY  
£2,700 Per Calendar Month

- 1 bedroom modern flat
- Spacious reception room
- Indoor heated pool access
- Sauna and steam rooms
- Jacuzzi for relaxation
- Residents' gym included
- 24/7 concierge service
- CCTV for added security
- Prime Hammersmith location
- Viewing highly recommended

Welcome to this modern flat located in the desirable area of Bolander Grove, Hammersmith. This charming one-bedroom apartment offers a comfortable living space of 580 square feet, perfect for individuals or couples seeking a stylish urban retreat.

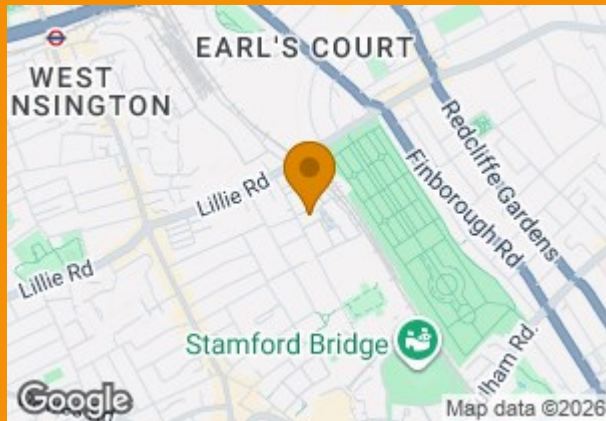




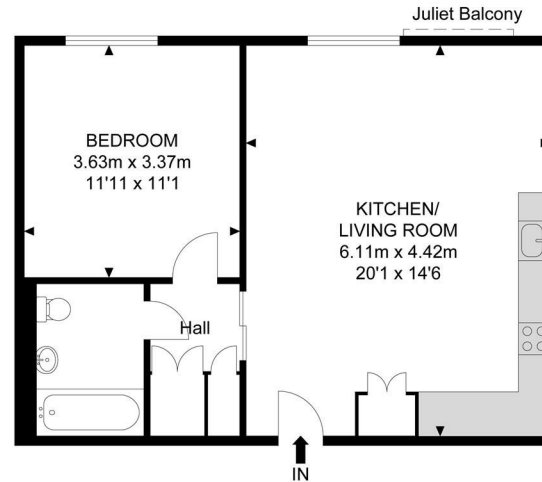
Upon entering, you will find a well-appointed reception room that provides a warm and inviting atmosphere, ideal for relaxation or entertaining guests. The bedroom is thoughtfully designed to ensure a peaceful night's sleep, while the bathroom features contemporary fittings that enhance the overall appeal of the property.

One of the standout features of this apartment is its access to The Clubhouse in One Lillie Square. Residents can enjoy a range of exceptional amenities, including an indoor heated pool, sauna, steam rooms, and a rejuvenating Jacuzzi. For those who value fitness, the residents' gym is well-equipped to cater to your workout needs. Additionally, the 24/7 concierge service offers convenience and peace of mind, ensuring that all your needs are met.

Situated in Hammersmith, this property benefits from excellent transport links and a vibrant local community, with an array of shops, restaurants, and parks nearby. This flat presents a wonderful opportunity to enjoy modern living in a sought-after location. Do not miss the chance to make this delightful apartment your new home.



# Bolander Grove



2nd Floor



APPROX. GROSS INTERNAL FLOOR AREA 541.42 SQ FT / 50.30 SQM

Whilst every attempt has been made to ensure the accuracy of the floor plan contained here, measurements of doors, windows, rooms and any other items are approximated and no responsibility is taken for any error, omission or mis-statement. This plan is for illustrative purposes only and should be used as such by any prospective purchaser. The service, system and appliances shown have not been tested and no guarantee as to their operability or efficiency can be given.

© SpacePhoto

Photography and Floor Plan

Energy Efficiency Rating		Current	Potential
Very energy efficient - lower running costs			
(12 plus) A			
(81-91) B		85	85
(69-80) C			
(54-68) D			
(39-53) E			
(21-38) F			
(1-20) G			
Not energy efficient - higher running costs			
England & Wales		EU Directive 2002/91/EC	

52 Grosvenor Gardens

London

SW1W 0AU

020 7956 2080

steven.hartman@icon-residential.co.uk

<http://www.icon-residential.co.uk/>