

abbotFox



Ashman Bank, Geoffrey Watling Way,
Norwich, NR1
£200,000

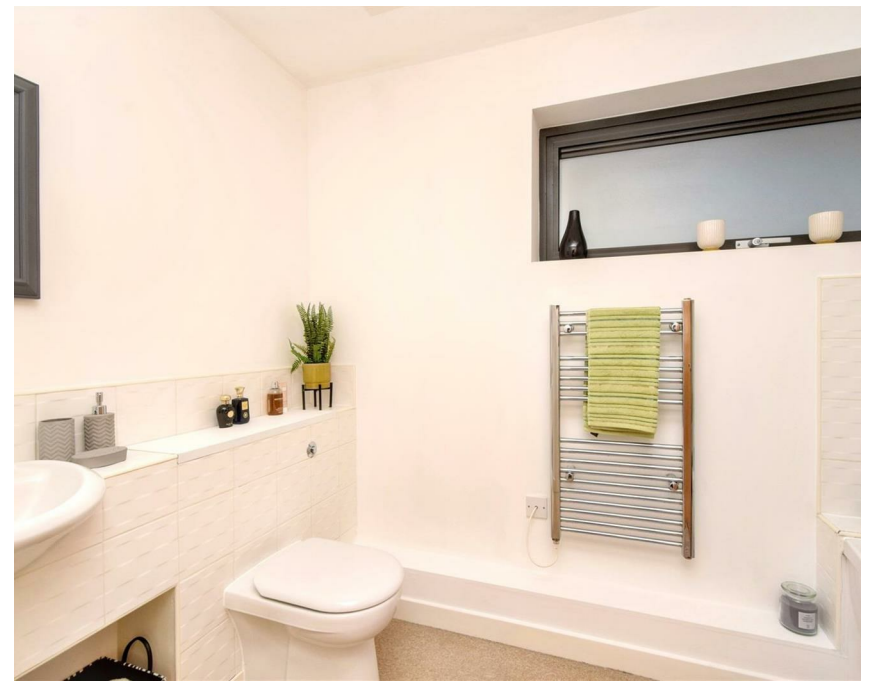
“

We are a team of genuine individuals who hold a deep passion for both property and marketing. Collectively, we bring over 70 years of experience in the property market of Norfolk and Suffolk. Our affection for both counties runs deep, and we are enthusiastic about sharing our passion with you.

Colin McKenzie | **Branch Partner**







THE DETAIL _____

abbotFox presents this stylish two bedroom apartment, perfectly situated within easy reach of a wealth of amenities, and offered to the market with no onward chain.

Well presented throughout, this property offers spacious open-plan living, featuring a bright lounge and dining area with doors opening onto a private balcony, overlooking the internal communal gardens, and a modern fitted kitchen. Two well-proportioned bedrooms are complemented by a contemporary bathroom, creating a comfortable and practical living space ideal for professionals, first-time buyers, or investors alike. The property further benefits from secure, gated, allocated parking and well-maintained communal grounds.

Located within the Riverside development, that sits within easy reach of the city centre and excellent transport links, this apartment offers the perfect blend of convenience, style, and modern living. Early viewing is highly recommended.



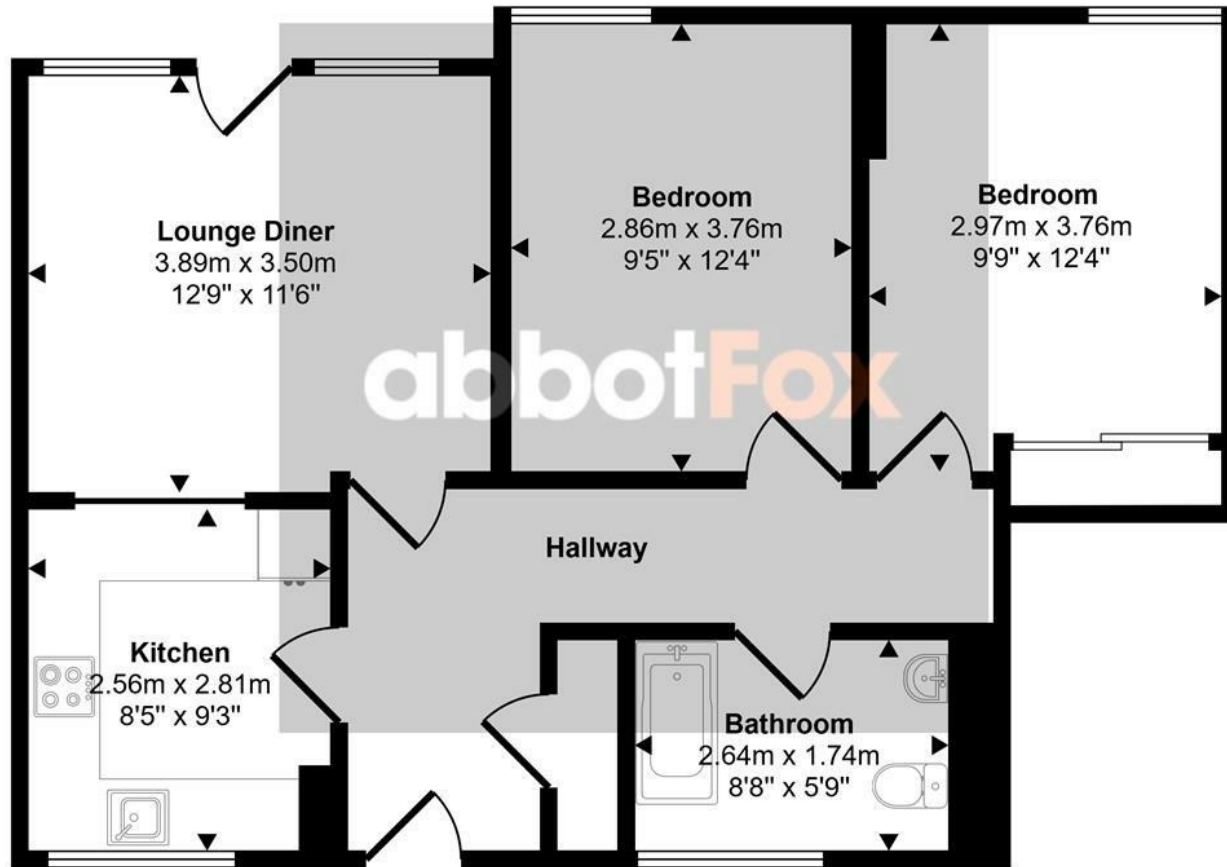




THE HIGHLIGHTS _____

- Purpose built apartment
- Two bedrooms
- Private balcony
- Secure allocated parking
- Convenient location
- No onward chain
- Ideal first time buy

Approx Gross Internal Area
62 sq m / 671 sq ft



Floorplan

This floorplan is only for illustrative purposes and is not to scale. Measurements of rooms, doors, windows, and any items are approximate and no responsibility is taken for any error, omission or mis-statement. Icons of items such as bathroom suites are representations only and may not look like the real items. Made with Made Snappy 360.

Let's talk

01603 660000

sales@abbotfox.co.uk

@abbotfox

EPC RATING -

Disclaimer – In accordance with the Property Misdescriptions Act, the company abbotFox gives notice that all descriptions, references to condition, necessary permissions for use and other details are given in good faith and believed to be correct, but any purchaser should not rely on them as statements of fact, and must satisfy themselves by inspection or other means, as to their accuracy.