



Parkway

London, NW1

Asking Price £775,000

This stunning, laterally spacious, two double bedroom apartment is situated on the first floor within this impressive period conversion, moments from Regent's Park. This wonderful property has just undergone a high quality refurbishment, which included the exterior and the communal areas. It's practically a new-build. Accommodation comprises of a spacious reception leading into the stylish, fully fitted kitchen. It offers two double bedrooms - one of which is en-suite, and a family bathroom. Long lease, chain-free and low service charges.

CHESTERTONS



Parkway

London, NW1

- First floor
- Beautifully presented
- Located in the heart of Camden Town
- Regents Park is only moments away
- Low service charges and 999-year lease
- Chain-free



Parkway is ideally situated moments from all the amenities of Camden and close to Camden's underground station which services the Northern Line. The green open spaces of Regent's Park are in close proximity.

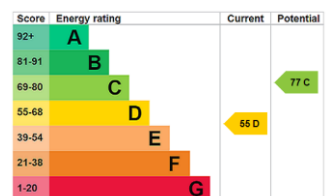
Tenure: Leasehold with 998 years remaining

Service Charge: £800 per annum

Ground Rent: £0

Local Authority: Camden

Council Tax Band: TBC



Chestertons Camden & Kentish Town Sales

99-101 Parkway

Camden

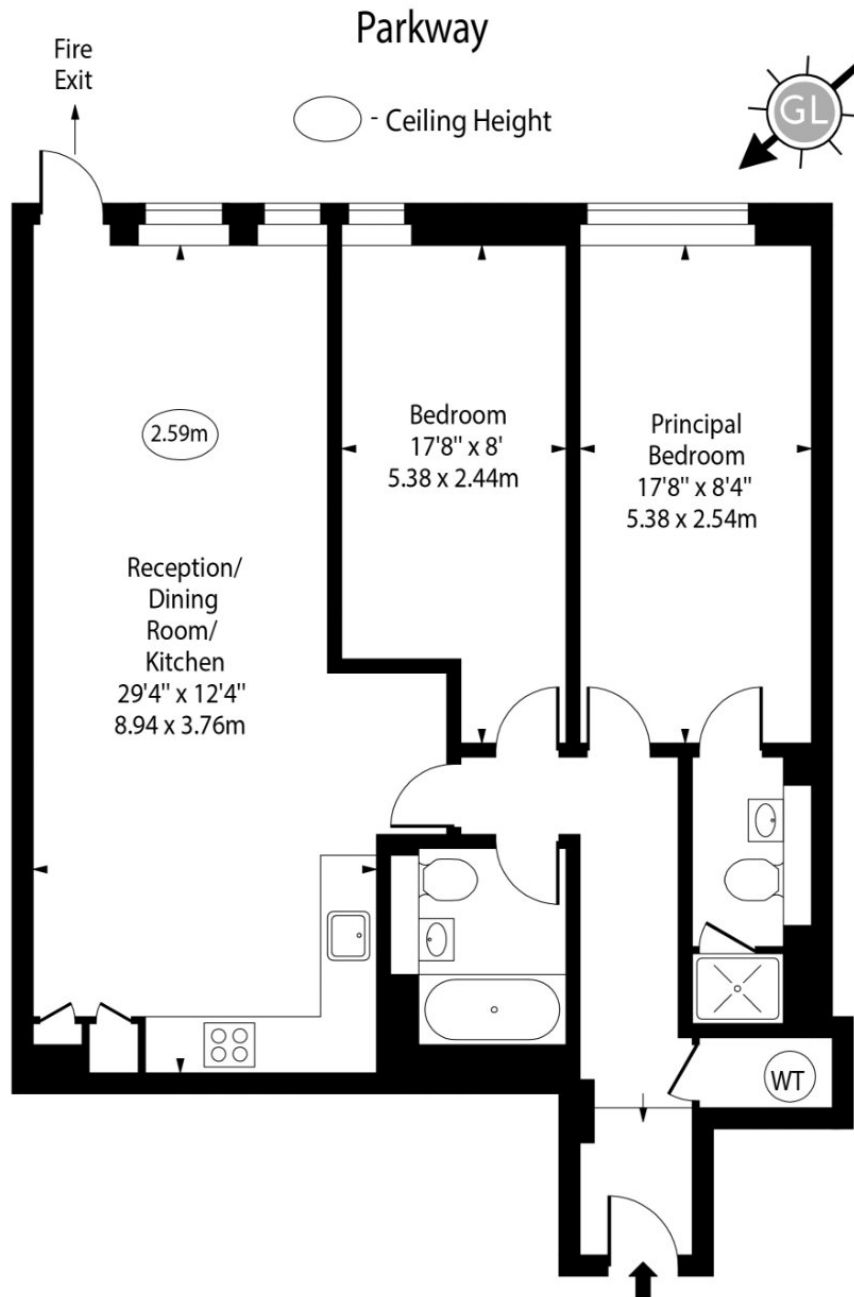
London

NW1 7PP

camden@chestertons.co.uk

020 7267 2053

chestertons.co.uk



First Floor

Gross Internal Area - 845 Sq Ft - 78.50 Sq M

Approx Gross Internal Area 845 Sq Ft - 78.50 Sq M

Every attempt has been made to ensure the accuracy of the floor plan shown. However, all measurements, fixtures, fittings, and data shown are approximate interpretations and for illustrative purposes only. Measured according to the RICS. Not To Scale.

www.goldlens.co.uk

Ref. No. 031243K

