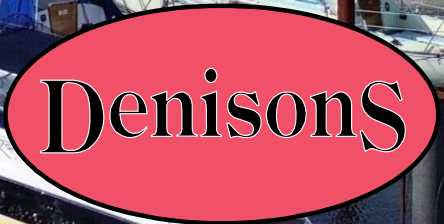


1 The Moorings, 2 Willow Way

1 The Moorings



# 1 The Moorings

2 Willow Way, BH23 1JJ

£900,000

A stunning waterside townhouse enjoying picturesque views over the River Stour, situated within a highly sought-after residential location close to Christchurch Town Centre. This beautifully presented home offers spacious and versatile accommodation arranged across three floors, perfectly designed for modern coastal living. The property boasts four bedrooms, with three benefiting from delightful river views, alongside two contemporary bathrooms finished to a high standard. The bright and airy lounge provides an ideal entertaining space, leading directly onto a private decked terrace with an impressive 8-metre mooring, perfect for enjoying the tranquil waterside setting. Further benefits include an integral garage, off-road parking, and excellent access to local amenities and transport links. Ideally positioned within walking distance of Christchurch Town Centre, Wick Ferry, scenic river walks, Hengistbury Head, and the award-winning Southbourne beaches, this exceptional home combines lifestyle, location and luxury.



**Entrance Hall**

**Garage 17' 6" x 9' 7" (5.33m x 2.92m)**

**Lounge 16' 2" x 14' 4" (4.92m x 4.37m)**

**Sun Deck**

**Kitchen/Diner 17' 3" x 9' 8" (5.25m x 2.94m)**

**WC**

**Master bedroom 14' 2" x 11' 11" (4.31m x 3.63m)**

**En-suite Bathroom**

**Bedroom 2 13' 4" x 9' 8" (4.06m x 2.94m)**

**Bedroom 3 9' 11" x 9' 11" (3.02m x 3.02m)**

**Bedroom 4 9' 10" x 6' 0" (2.99m x 1.83m)**



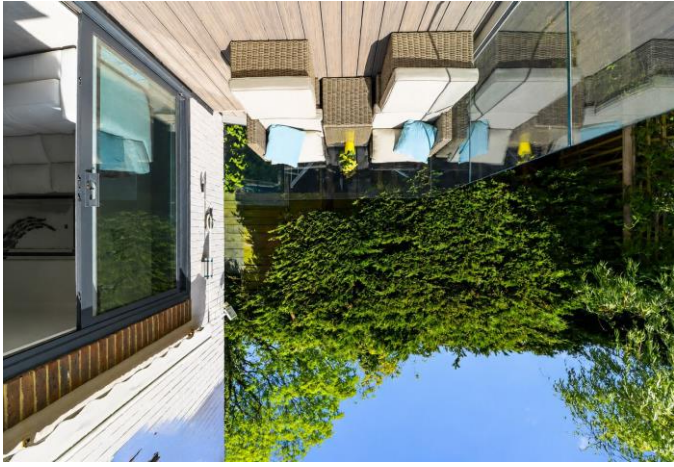


Denisons for themselves and for the Vendors or lessors of this property, whose Agents they are, give notice that these particulars are produced in good faith, are set out as a general guide only and do not constitute any part of a Contract. No person in the employment of Denisons has any authority to make or give any representation or warranty whatever in relation to this property.

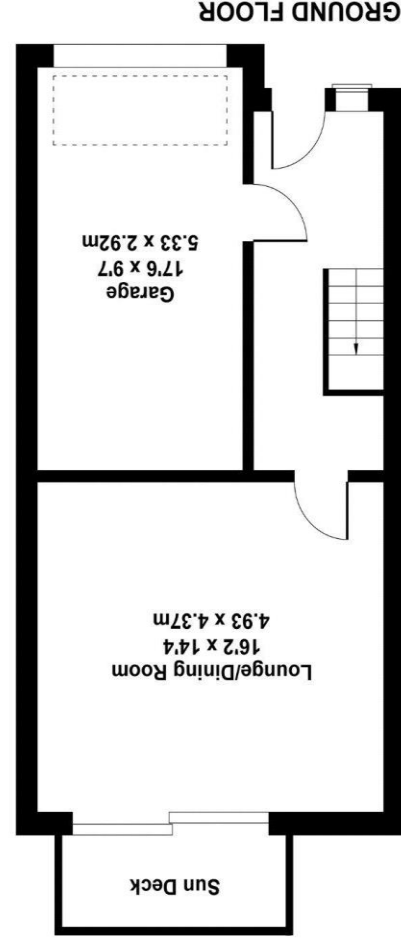
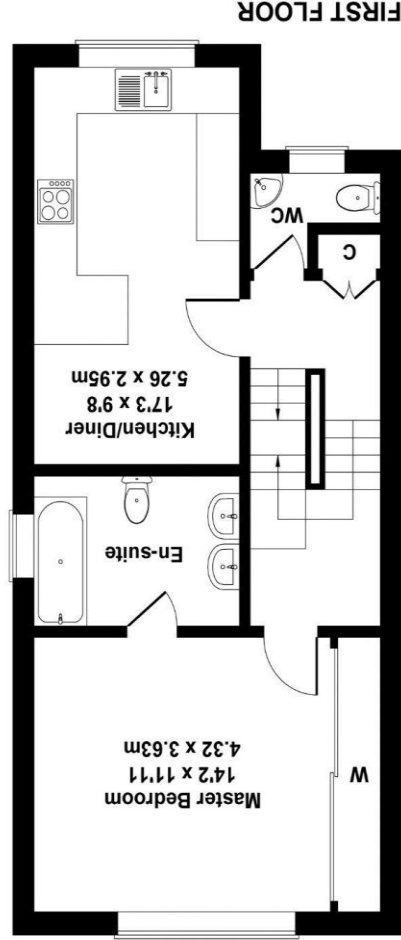
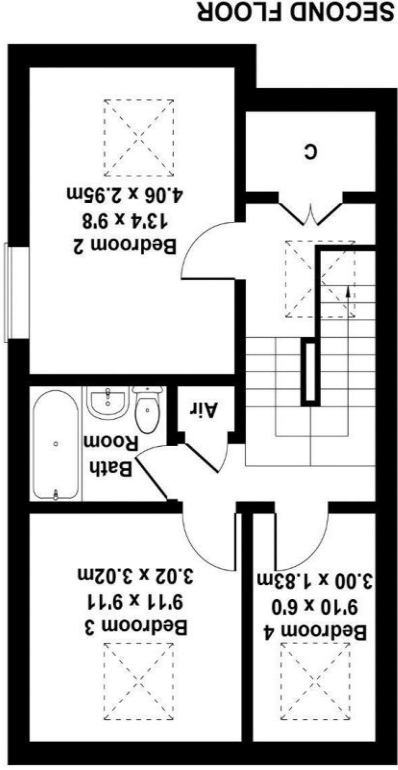
www.denisons.com

Mayfair  
 Cashel House, London, W1U 3JT  
 0870 112 7099  
 mayfair@denisons.com

Christchurch  
 12 Castle Street, Christchurch BH23 1DT  
 01202 484748  
 christchurch@denisons.com



Score	Energy rating	Current	Potential
92+	A		
81-91	B		
69-80	C		
55-68	D	68 D	79 C
39-54	E		
21-38	F		
1-20	G		



**1 The Moorings**  
 Approximate Gross Internal Area  
 1533 sq ft - 142 sq m