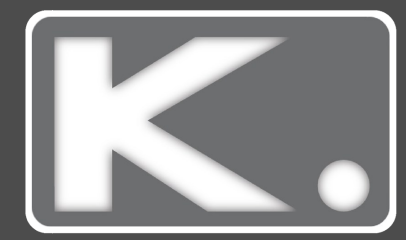


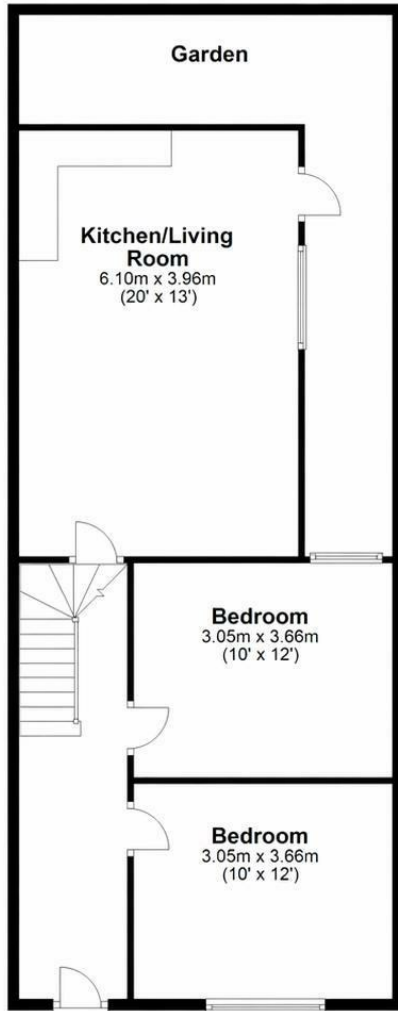


**3 Bed  
House - Terraced  
located in**

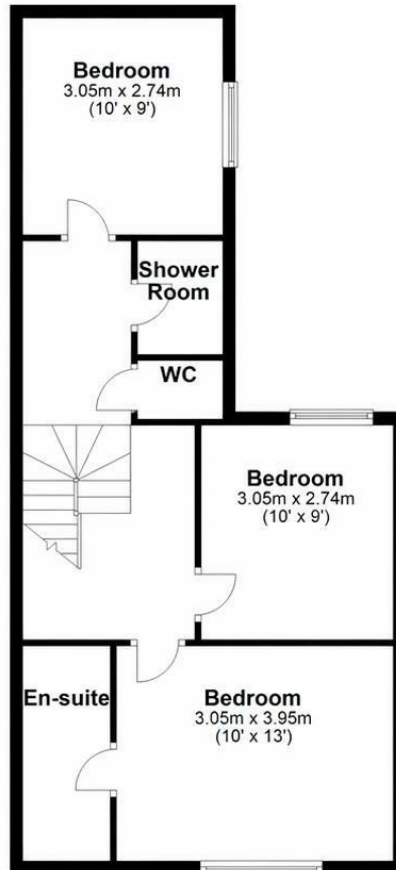
**£700,000**



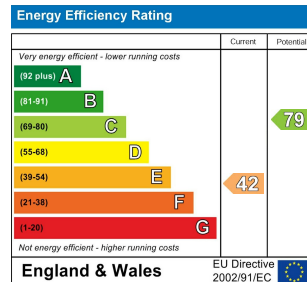
**Ground Floor**  
Approx. 73.9 sq. metres (795.8 sq. feet)



**First Floor**  
Approx. 48.9 sq. metres (526.4 sq. feet)



Total area: approx. 122.8 sq. metres (1322.2 sq. feet)



DIRECTIONS

CONTACT

Kendrick Property Services - Brighton  
10-12 Lewes Road  
Brighton  
East Sussex  
BN2 3HP

E:  
sales@kendrickpropertyservices.co.uk  
T: 01273 600162  
www.kendrickpropertyservices.co.uk

