



Spur Road, Linton, Cambridge £500,000 **Freehold**

Key Features

3 1 B E

- Well presented throughout
- Spacious lounge plus further reception room
- Good size kitchen/breakfast room with integrated appliances
- Three double bedrooms
- En-suite to main bedroom plus family bathroom

Nestled within a quiet development in the ever-popular village of Linton, this beautifully presented three-bedroom home offers style, comfort, and peace of mind. Built in 2023, the property comes with the added benefit of 7 years remaining on the NHBC guarantee, ensuring security for years to come.

From the moment you arrive, the home impresses with its spacious layout and natural light throughout. The current owners have thoughtfully enhanced the property with a large front porch, adding both practicality and curb appeal.

The ground floor boasts two generous reception rooms, perfect for family living and entertaining, alongside a bright and modern kitchen/breakfast room. A convenient downstairs cloakroom completes the lower level.



Upstairs, you'll find three well-proportioned double bedrooms, including a stunning main suite with a stylish en-suite shower room, plus a contemporary family bathroom. Outside, the private west-facing garden is fully enclosed and features a patio and lawn area - ideal for relaxing or hosting summer gatherings. To the front, a carport and driveway provide off-road parking for up to three vehicles.

This is a fantastic opportunity to own a modern, move-in ready home in a highly sought-after location. Early viewing is highly recommended!

Linton is one of the most popular villages in south Cambridgeshire. It has an excellent range of facilities, including primary school, secondary school with outstanding sports facilities, recreation ground, village church, inns / restaurants, village store and numerous shops. It is a very vibrant village. The fine old market town of Saffron Walden is six miles to the south, whilst the university city of Cambridge is to the north-west. The M11 access points and rail links to Liverpool Street are within easy reach.

Porch

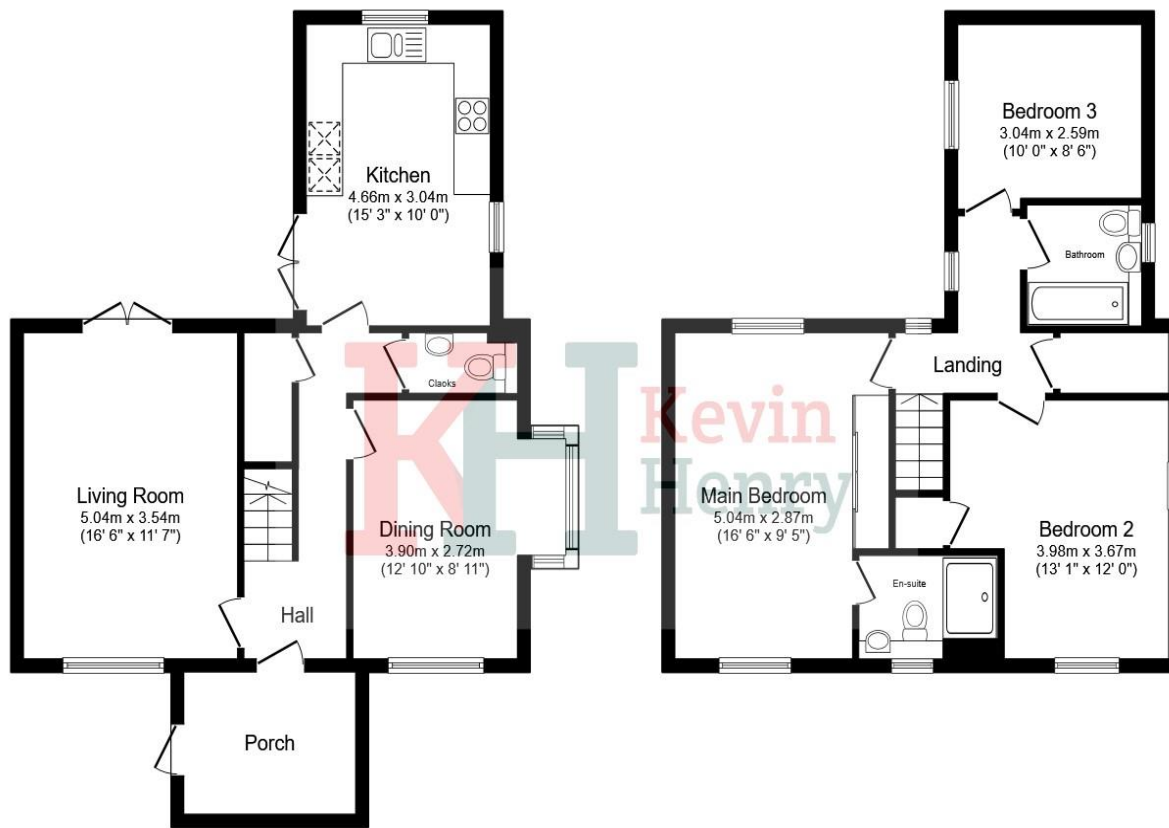
Downstairs Cloakroom

Living Room

5.04m x 3.54m

16'6" x 11'7"





Ground Floor

First Floor

This floor plan is for illustrative purposes only. It is not drawn to scale. Any measurements, floor areas (including any total floor area), openings and orientation are approximate. No details are guaranteed, they cannot be relied upon for any purpose and they do not form part of any agreement. No liability is taken for any error, omission or misstatement. A party must rely upon its own inspection(s). Powered by www.focalagent.com

Dining Room/Play Room
3.90m x 2.72m
12'10" x 8'11"

Kitchen/Breakfast Room
4.66m x 3.04m
15'3" x 10'0"

Landing
Airing Cupboard.

Bedroom One
5.04m x 2.87m
16'6" x 9'5"
Built-in wardrobes.

En-Suite
Bedroom Two
3.98m x 3.67m
13'1" x 12'0"

Bedroom Three
3.09m x 2.59m
10'0" x 8'6"

Bathroom
Garden
West facing garden with lawn and patio area
plus shed.

Front
Car port and driveway parking for three cars.

To view this property call Kevin Henry on:
01799 513632

Selling your property?

Contact us to arrange a FREE home valuation.

 01799 513632

 1 Market Street, SAFFRON WALDEN, Essex, CB10 1JB

 sales@kevinhenry.co.uk

 www.Kevinhenry.co.uk



 SCAN ME



Kevin Henry is a trading name of Sharman Quinney Holdings Limited which is registered in England and Wales under company number 4174227, Registered Office is Cumbria House, 16-20 Hockliffe Street, Leighton Buzzard, Bedfordshire, LU7 1GN. VAT Registration Number is 500 2481 05.

1: These particulars do not constitute part or all of an offer or contract. 2: The measurements indicated are supplied for guidance only and as such must be considered incorrect. 3: Potential buyers are advised to recheck the measurements before committing to any expense. 4: Kevin Henry has not tested any apparatus, equipment, fixtures, fittings or services and it is the buyers interests to check the working condition of any appliances. 5: Kevin Henry has not sought to verify the legal title of the property and buyers must obtain verification from their legal representative. 6: Intending purchasers will be asked to produce identification documentation at a later stage and we would ask your co-operation in order that there will be no delay in agreeing the sale. Ref: SAF103640 - 0005

