



1 Hogarth Close, Elburton, Plymouth, PL9 8EX



%price%



This spacious and extended three-bedroom semi-detached family home in Hogarth Close, is ideally positioned within a popular residential area. The property benefits from a private driveway and garage, while a gated entrance leads into an enclosed courtyard providing access to the front of the home.

The accommodation begins with an entrance porch incorporating a useful storage cupboard. From here, stairs rise to the first floor and access is provided to the ground floor living space. The extended lounge/diner is bright and generously proportioned, featuring patio doors that open directly onto the enclosed rear garden, making it ideal for both families living and entertaining. The modern fitted kitchen is well appointed with a range of wall and base units, complemented by an integrated hob and oven.

To the first floor are three well-proportioned bedrooms and a contemporary three-piece bathroom suite finished in white.

Externally, the property boasts an enclosed, level rear garden which offers an excellent space for entertaining family and friends, while also providing a safe and secure environment for children to play.

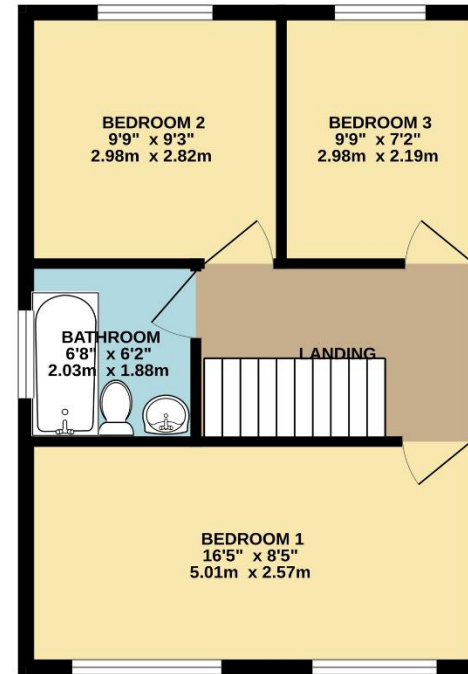
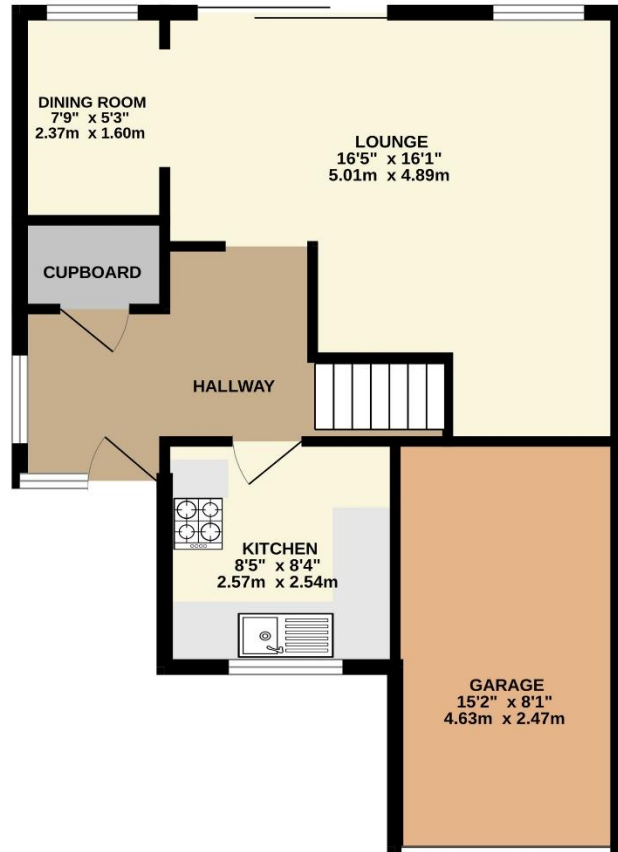
This family home is situated within close proximity to amenities and transport links. Elburton Village offers a wide array of shops to include a cooperative store, post office, butchers and bakers to name but a few. Transport links provide access to the Plymstock Broadway Shopping Centre and the vibrant city centre of Plymouth. Recreational facilities can be found close by to include Horsham Playing Fields and the stunning coastal walks that can be found at Wembury and Heybook Bay.



To view this property call Lang Town & Country Estate Agents on **01752 456000**.







TOTAL FLOOR AREA : 952 sq.ft. (88.4 sq.m.) approx.  
Measurements are approximate. Not to scale. Illustrative purposes only  
Made with Metropix ©2026



Lang Town & Country  
6 The Broadway  
Plymstock  
Plymouth  
PL9 7AU  
Tel: 01752 456000  
Email: [plymstock@langtownandcountry.com](mailto:plymstock@langtownandcountry.com)  
[www.langtownandcountry.com](http://www.langtownandcountry.com)

Lang Town & Country endeavour to ensure the accuracy of property details produced and displayed, we have not tested any apparatus, equipment, fixtures, fittings or services and so cannot verify that they are connected, in working order or fit for purpose. A buyer must check the availability of any property and make an appointment to view before embarking on any journey to see a property.

