



JEDDO ROAD, W12

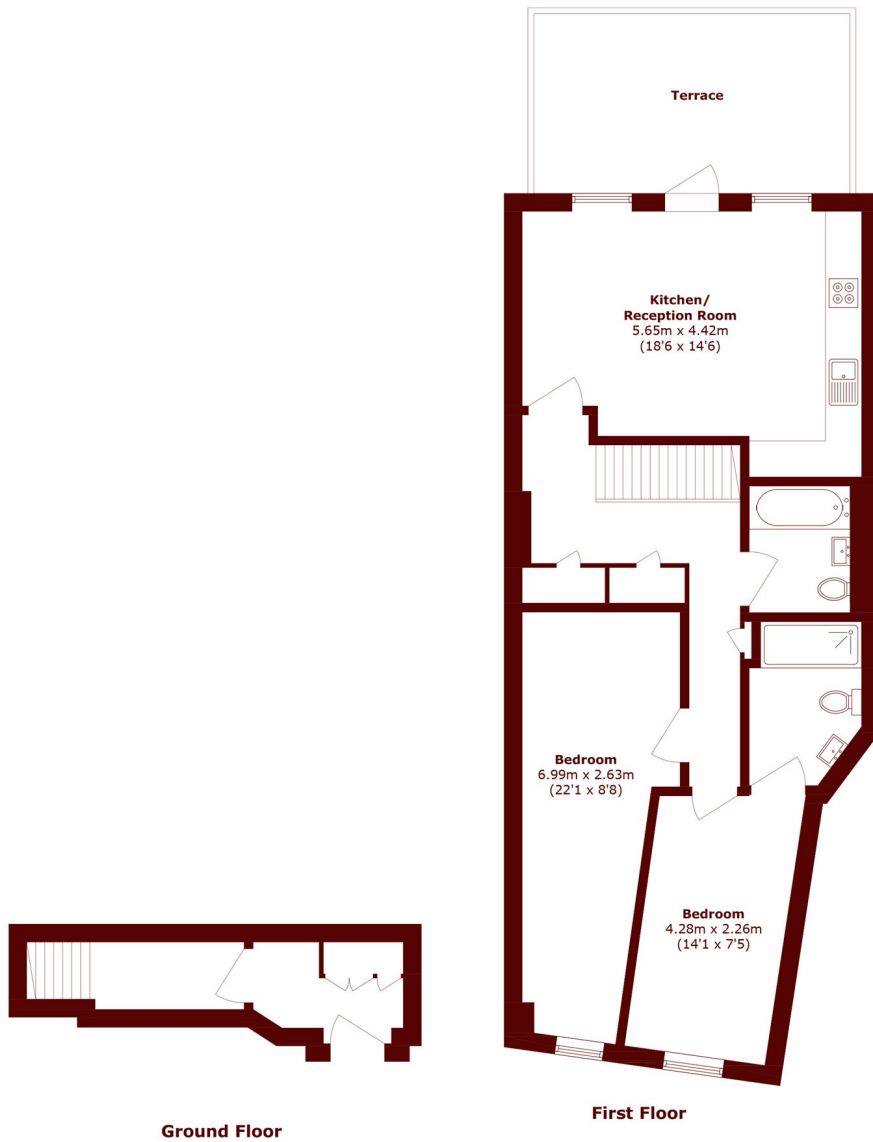
£585,000

A beautifully presented two-bedroom, two-bathroom home set within an exclusive, small-scale new development of just a handful of residences. Finished to an exceptionally high standard throughout, the property offers

Double Bedrooms
Roof Terrace
Lease of 999yrs

Peppercorn Ground Rent
Service Charge £1587pa
Private terrace

STEP INSIDE JEDDO ROAD



Total area (approx.): 80.8 sq. m (869.7 sq. ft)
Terrace area (approx.): 15.7 sq. m (167.0 sq. ft)

Askew Road
020 8102 0123

Energy Rating: We aim to make our particulars both accurate and reliable. However, they are not guaranteed; nor do they form part of an offer or contract. If you require clarification on any points then please contact us, especially if you're traveling some distance to view. Please note that appliances and heating systems have not been tested and therefore no warranties can be given as to their good working order

MARSH &
PARSONS