

Sussex Gardens, W2

£1,750 Per week

A large studio located near Hyde Park and Marble Arch. The property has a modern kitchen, bathroom and wooden flooring throughout.

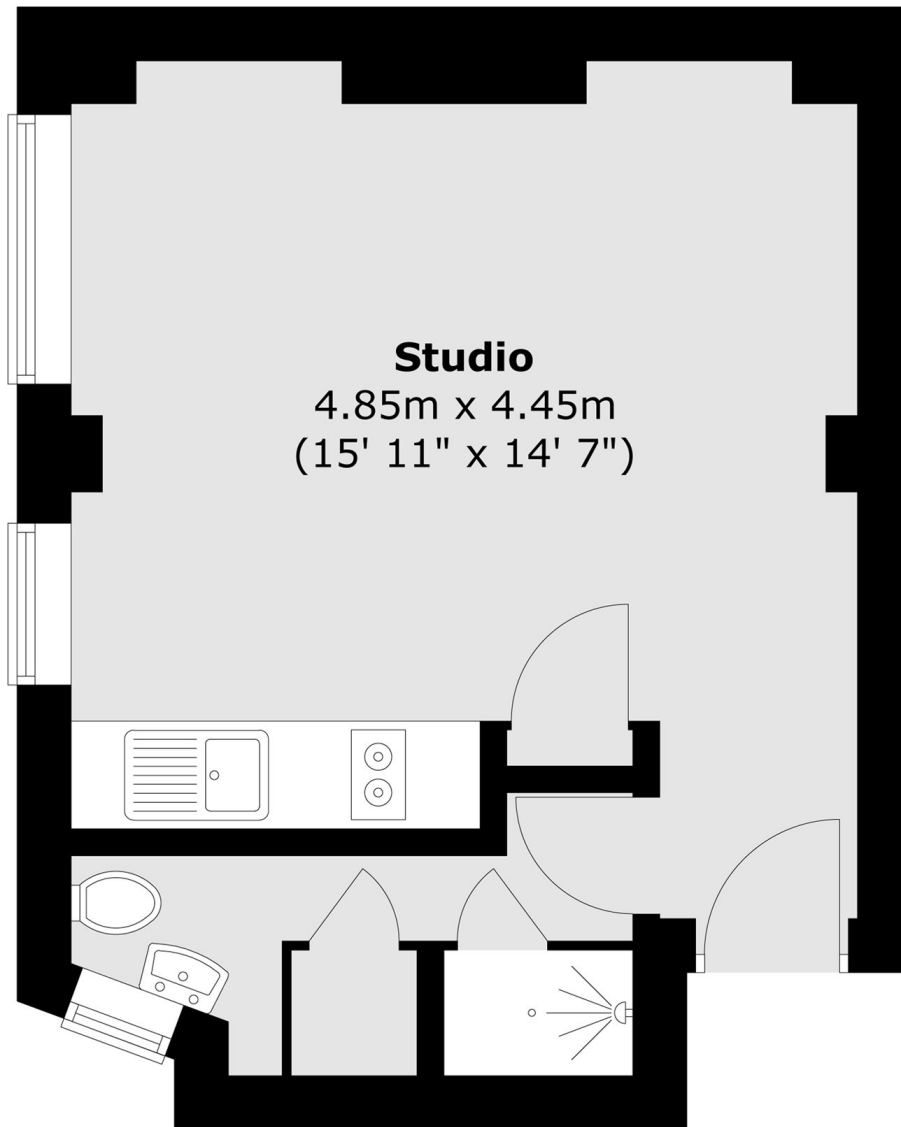
Located close to Paddington Station and multiple tube stations. Hyde Park is a short walk and great shops, bars and restaurants are a walking distance from the property.

Features

Studio
Furnished
Modern Kitchen and Bathroom
Forth Floor
Lift

Sussex Gardens, London, W2

Fourth Floor



Total area (approx.) : 24.2 sq. m (260 sq. ft)