



PER MONTH

£1,850 Per Month

Commercial Road

London, E1 1NZ

The flat comprises one spacious bedroom, ideal for relaxation, and a newly completed contemporary bathroom.

One of the standout features is the stunning roof terrace, which provides breathtaking views of the London skyline. This outdoor space is perfect for enjoying a morning coffee or unwinding after a long day, making it a true gem in the bustling city. But add the 24hr concierge to take in your parcels then you have everything you need.

The location is simply superb, placing you within easy reach of a variety of local amenities, shops, and transport links, ensuring that you are well-connected to all that London has to offer.

A perfect base if you are single or a couple, this flat presents an excellent choice for those seeking a stylish urban lifestyle in one of the capital's most sought-after areas. Don't miss the chance to make this delightful property your new home.

Part furnished

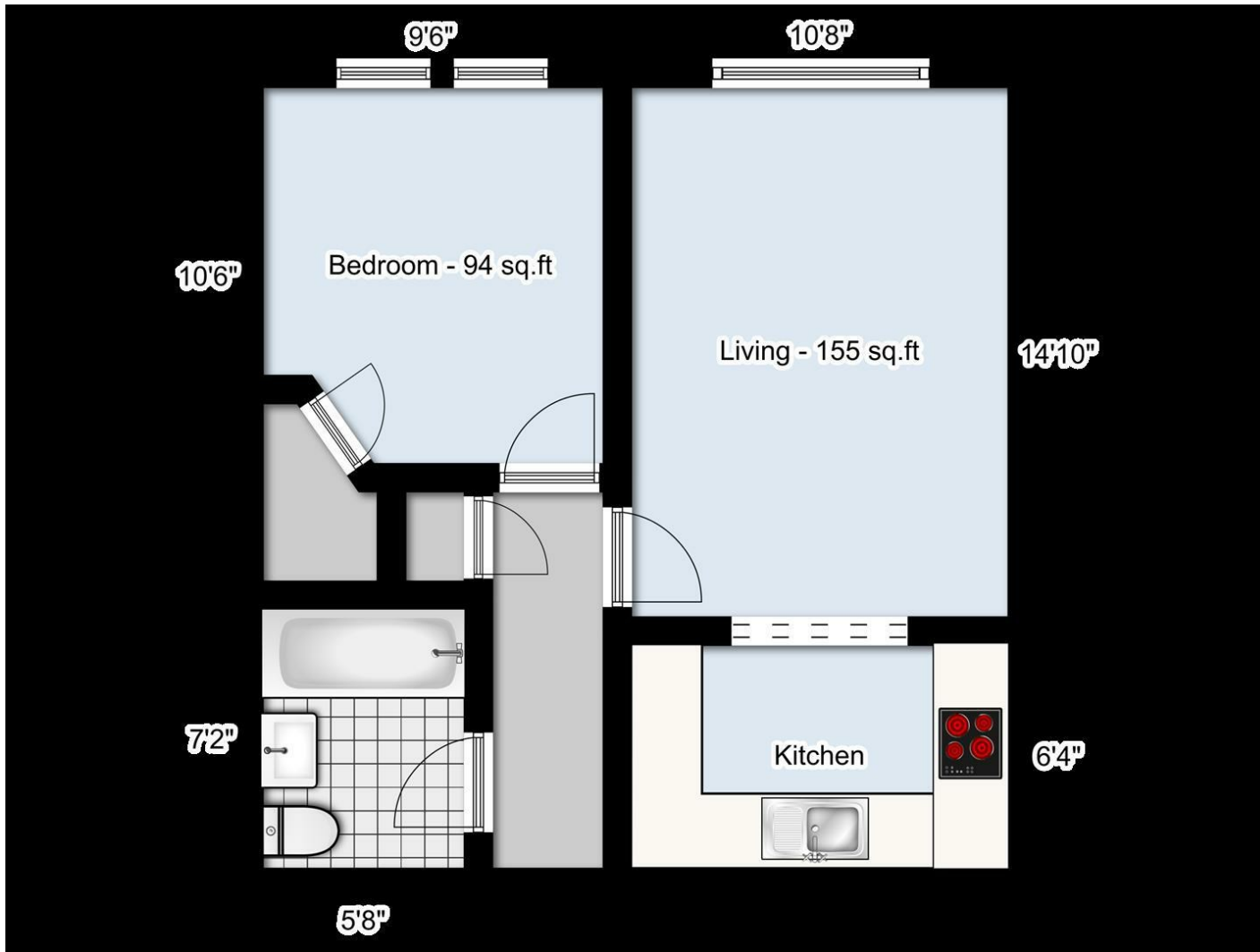
5 weeks deposit: £2,134

Council Tax: Band C

12 month contract







Energy Efficiency Rating		
	Current	Potential
<i>Very energy efficient - lower running costs</i>		
(92 plus) A		
(81-91) B		
(69-80) C		
(55-68) D		
(39-54) E		
(21-38) F		
(1-20) G		
<i>Not energy efficient - higher running costs</i>		
England & Wales	EU Directive 2002/91/EC	

Agents Note: Whilst every care has been taken to prepare these particulars, they are for guidance purposes only. All measurements are approximate and are for general guidance purposes only and whilst every care has been taken to ensure their accuracy, they should not be relied upon and potential buyers/tenants are advised to recheck the measurements

OFFICE ADDRESS
 88 Cheshire Street
 London
 E2 6EH

OFFICE DETAILS
 0207 739 6969
 info@peachproperties.com
 www.peachproperties.com