



Connells

Glebe Road
Peterborough



Property Description

This well-presented three-bedroom semi-detached home offers spacious and versatile accommodation, ideal for families and first-time buyers alike. The property is approached via a driveway to the front, providing off-road parking and leading into a welcoming entrance porch and hallway.

To the ground floor, the layout comprises a bright and comfortable lounge positioned to the front of the property, flowing through to a generous dining room—perfect for entertaining. The kitchen is set to the rear and provides access through to a conservatory, offering additional living space and enjoying views over the garden. A convenient downstairs W.C. completes the ground floor accommodation.

To the first floor, there are three well-proportioned bedrooms, including two doubles and a further single room, all served by a family bathroom. The layout is practical and well-balanced, making excellent use of the space.

Externally, the property benefits from a large rear garden, providing a fantastic outdoor space for families, gardening enthusiasts, or those who enjoy al fresco dining. To the front, the driveway offers valuable off-road parking.

Viewings are highly recommended to fully appreciate the accommodation and space on offer.

Entrance Porch

Entrance Hall

Stairs to first floor, radiator, laminate flooring, two windows and door to the front.

Downstairs WC

Wash hand basin and WC.

Lounge

Bay window to the front, electric fireplace, radiators, carpet and coving with double doors to dining room.

Dining Room

Laminate flooring and coving.

Kitchen

Window to the rear, tiled flooring, space for appliances, high and low level storage with worktops over, spotlights, stainless steel sink/drainer with mixer tap.

Conservatory

Laminate flooring and radiator.

First Floor

Window to the side.

Bedroom One

Bay window to the front, radiators and carpet.

Bedroom Two

Window to the rear, laminate flooring and radiator.

Bedroom Three

Window to the front, radiator and laminate flooring.

Bathroom

Window to the rear, bath with shower over, tiled flooring and walls, WC and wash hand basin.

Outside

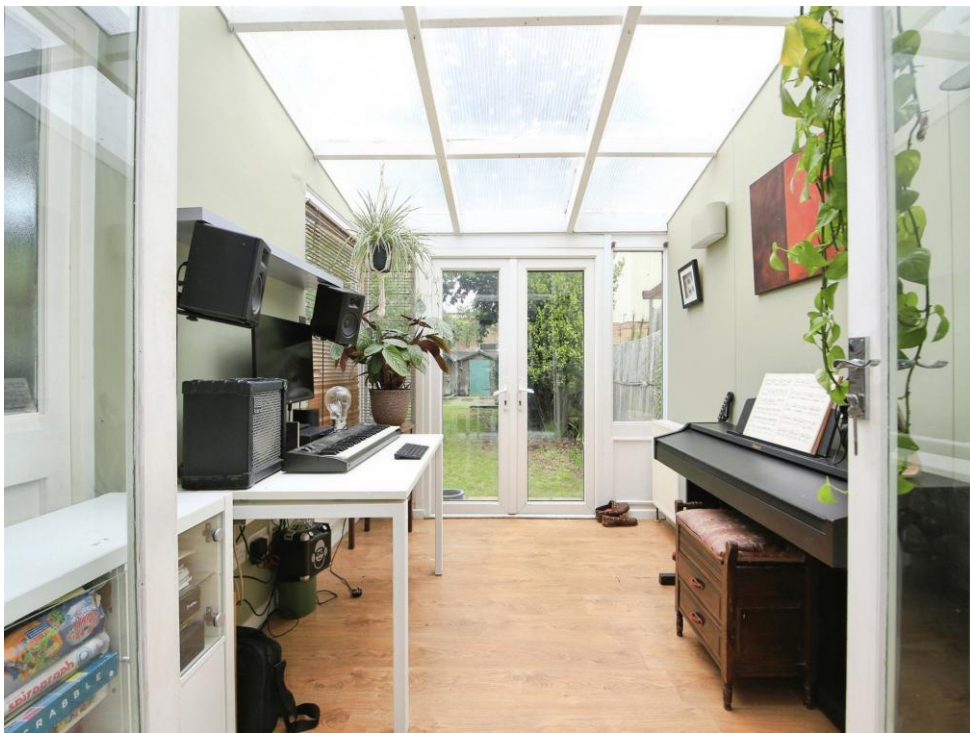
Rear Garden

Laid to lawn and shed.

Front

Grass area and driveway.









Total floor area 103.7 m² (1,116 sq.ft.) approx

This floor plan is for illustrative purposes only. It is not drawn to scale. Any measurements, floor areas (including any total floor area), openings and orientation are approximate. No details are guaranteed, they cannot be relied upon for any purpose and they do not form part of any agreement. No liability is taken for any error, omission or misstatement. A party must rely upon its own inspection(s). Powered by www.propertybox.io



To view this property please contact Connells on

T 01733 314 775
E peterborough@connells.co.uk

14 Cowgate
 PETERBOROUGH PE1 1NA

EPC Rating: E Council Tax
 Band: B

Tenure: Freehold

view this property online connells.co.uk/Property/PBO312908



1. MONEY LAUNDERING REGULATIONS Intending purchasers will be asked to produce identification documentation at a later stage and we would ask for your co-operation in order that there will be no delay in agreeing the sale. 2. These particulars do not constitute part or all of an offer or contract. 3. The measurements indicated are supplied for guidance only and as such must be considered incorrect. Potential buyers are advised to recheck measurements before committing to any expense. 4. We have not tested any apparatus, equipment, fixtures, fittings or services and it is in the buyers interest to check the working condition of any appliances.

Connells Residential is registered in England and Wales under company number 1489613, Registered Office is Cumbria House, 16-20 Hockliffe Street, Leighton Buzzard, Bedfordshire, LU7 1GN. VAT Registration Number is 500 2481 05.

See all our properties at www.connells.co.uk | www.rightmove.co.uk | www.zoopla.co.uk

Property Ref: PBO312908 - 0002