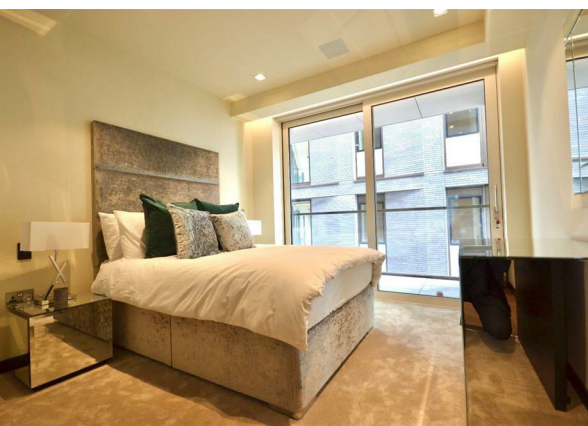
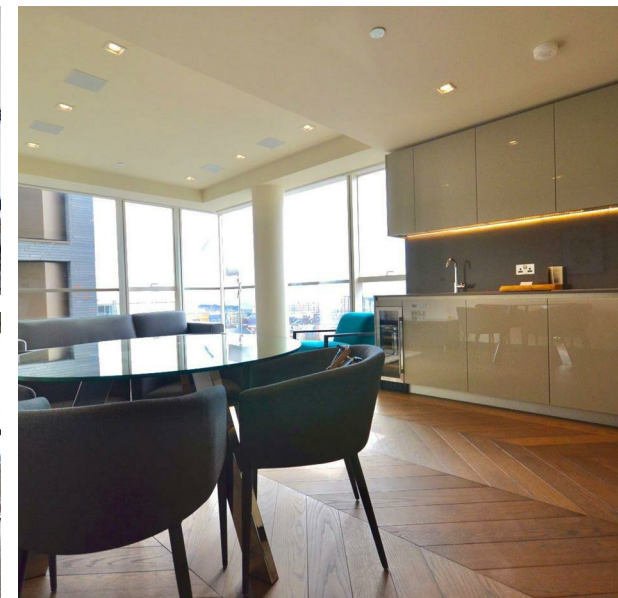
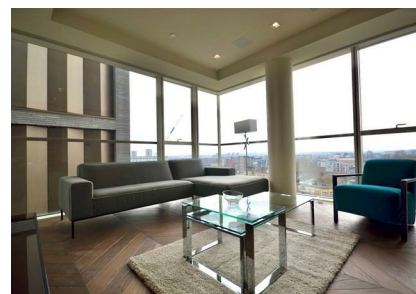
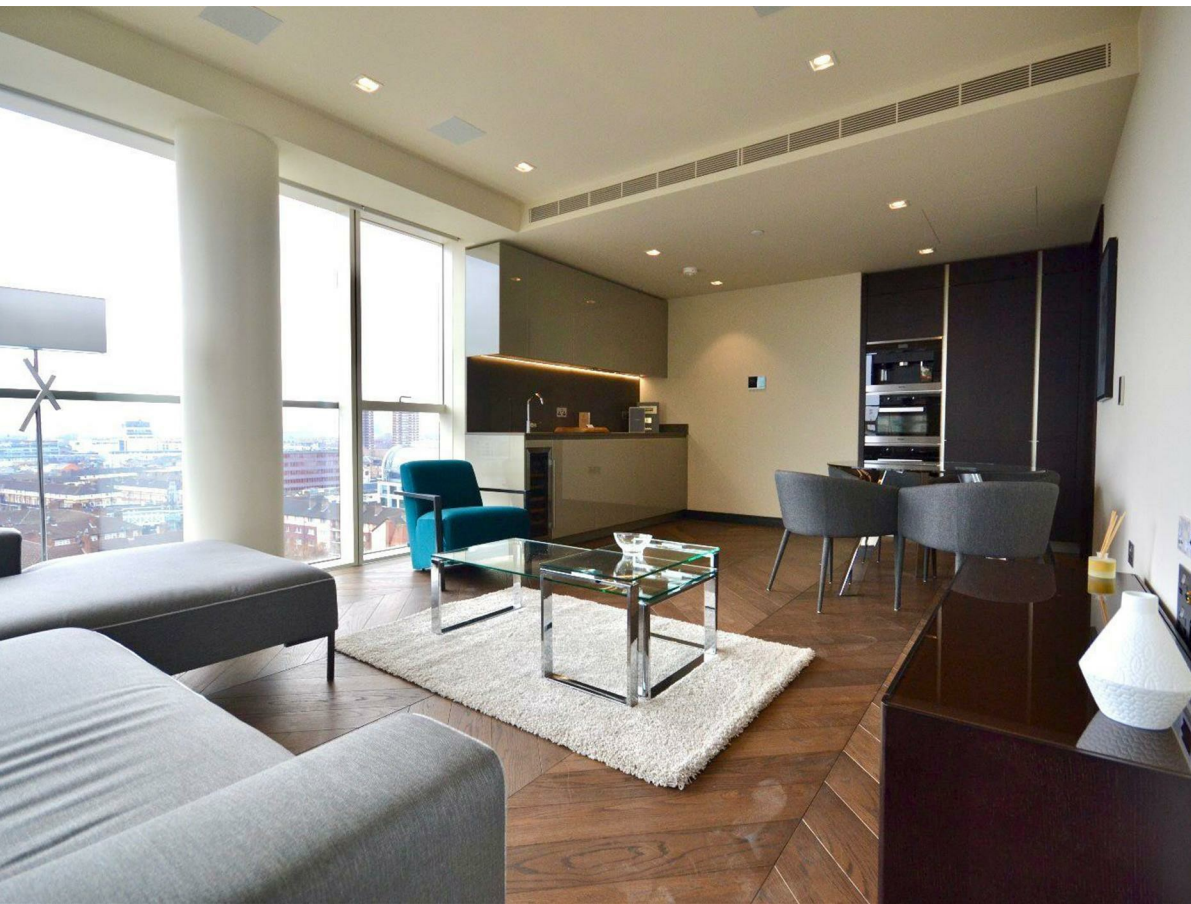


Flat 58, One Tower Bridge Sandringham House, Duchess Walk, London,
Greater London, SE1 2QX

£4,700 Per Month



Flat 58, One Tower Bridge Sandringham House, Duchess Walk, London, Greater London, SE1 2QX

£4,700 Per Month

Council Tax Band: F

Nestled in the prestigious One Tower Bridge development, this modern two-bedroom apartment offers a luxurious living experience in the heart of London. Spanning an impressive 807 square feet, the flat boasts a well-designed layout that maximises space and comfort.

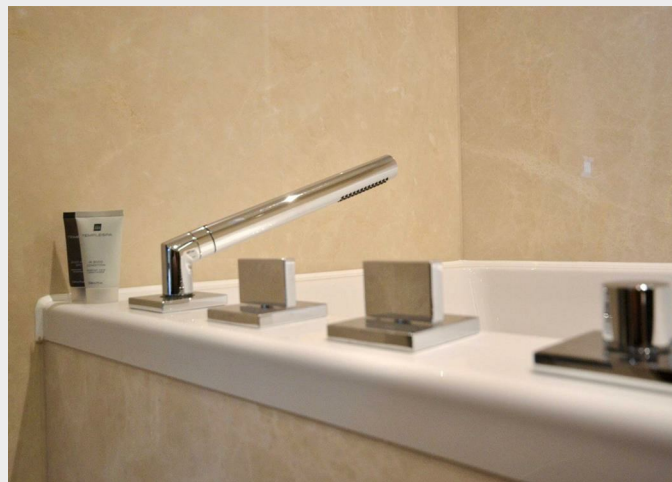
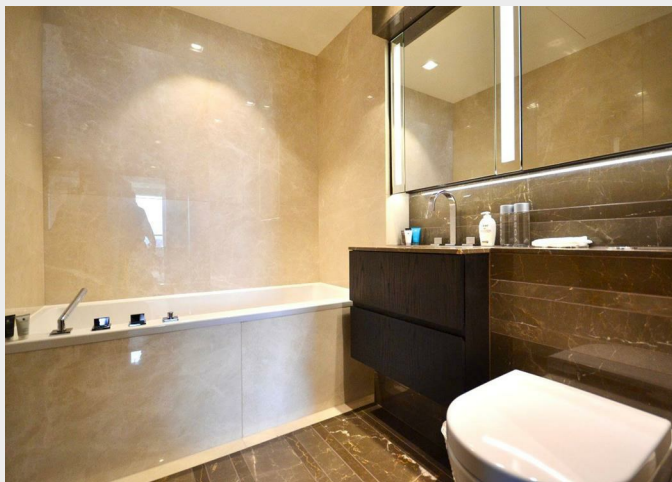
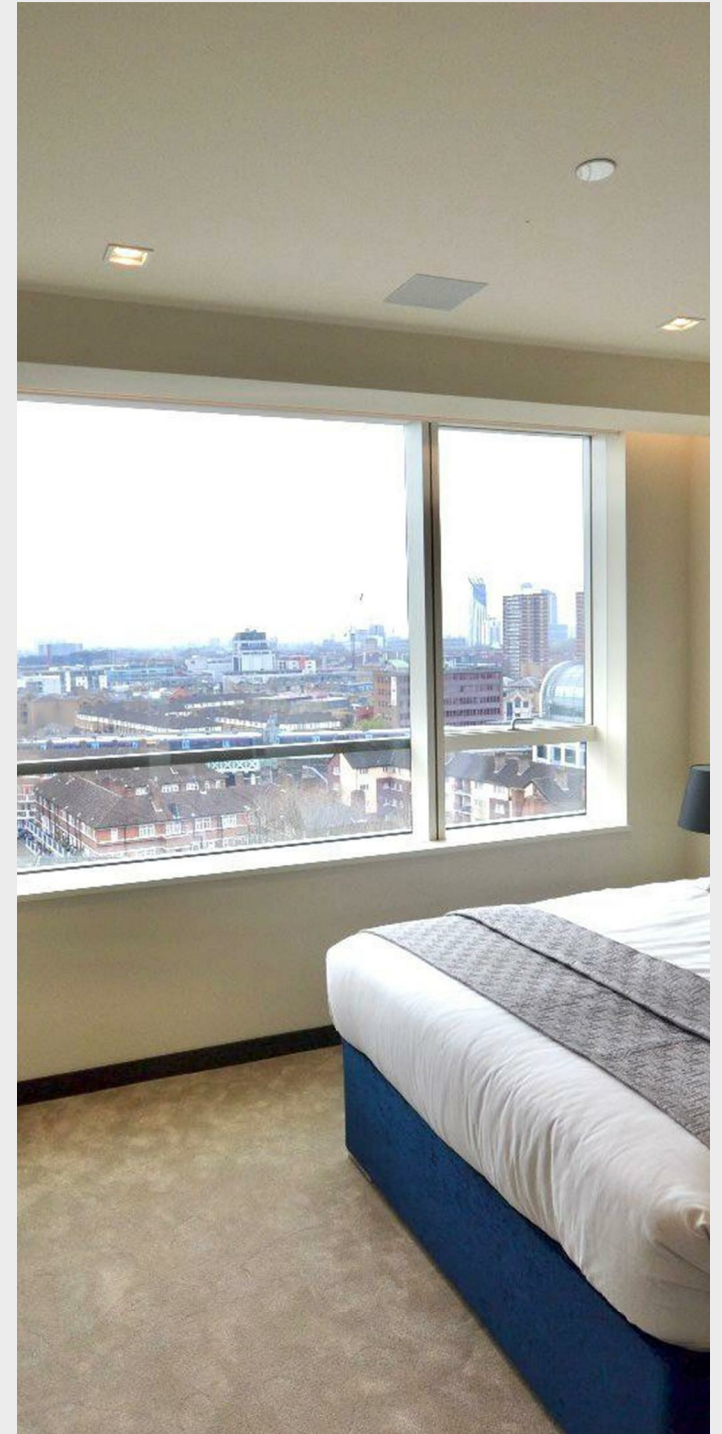
Upon entering, you are greeted by a spacious reception room, perfect for both relaxation and entertaining guests. The contemporary design is complemented by large windows that flood the space with natural light, creating a warm and inviting atmosphere.

The apartment features two generously sized bedrooms, each designed with comfort in mind. The master bedroom includes an en-suite bathroom, providing a private sanctuary for unwinding after a long day. The second bathroom is equally stylish and convenient, ensuring that both residents and guests have ample facilities.



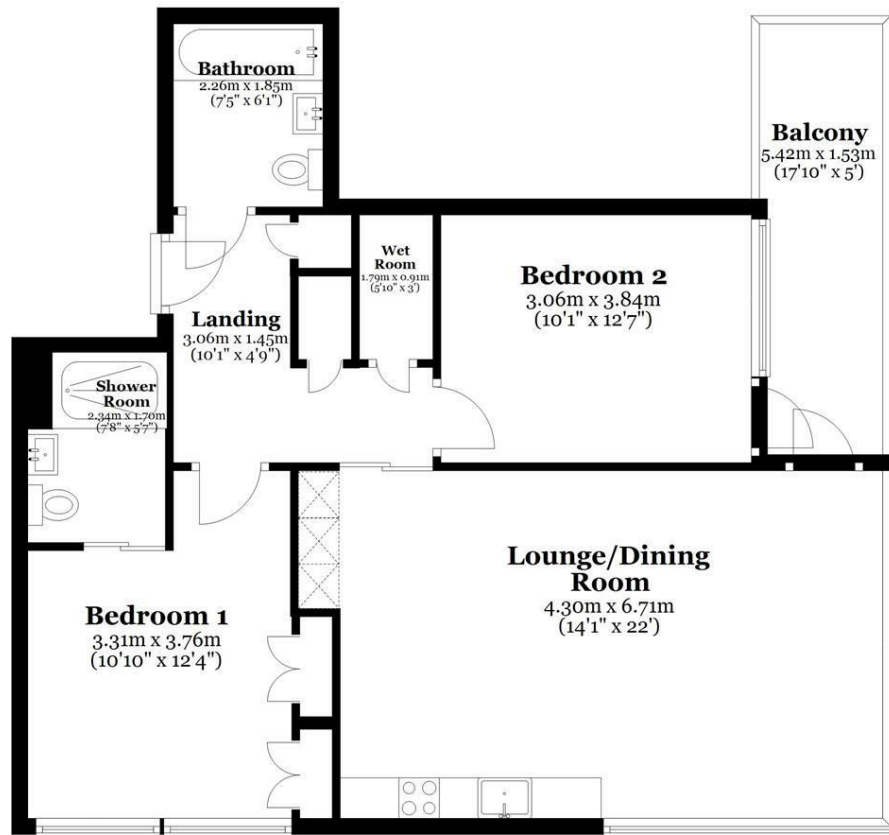






Eight Floor

Approx. 75.0 sq. metres (807.2 sq. feet)



Total area: approx. 75.0 sq. metres (807.2 sq. feet)

All measurements are appropriate and should not be relied upon.
Plan produced using PlanUp.

337 Forest Road
London
E17 5JR
02085277007

enquiries@completion.co.uk
completion.co.uk

Energy Efficiency Rating		
	Current	Potential
Very energy efficient - lower running costs		
(92 plus) A		
(81-91) B	84	84
(69-80) C		
(55-68) D		
(39-54) E		
(21-38) F		
(1-20) G		
Not energy efficient - higher running costs		
England & Wales	EU Directive 2002/91/EC	