



PROPERTY
SERVICES
LIMITED



2 Melbourne Road , Coventry, CV5 6JP

£450 Per Calendar Month



SHARED ACCOMMODATION - SINGLE OCCUPANCY ONLY

Double Room Available NOW

Looking for a spacious and fully furnished room in a sought-after area? This large double room is located in the popular Earlsdon neighbourhood—ideal for easy access to Coventry City Centre, Coventry University, and local amenities.

Property Features:

Fully furnished double room with:

Double bed

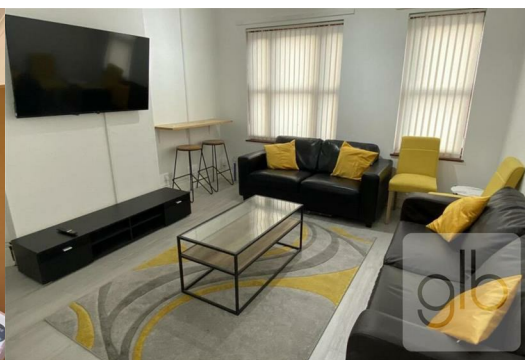
Desk and chair – perfect for studying or working from home

Chest of drawers & wardrobe

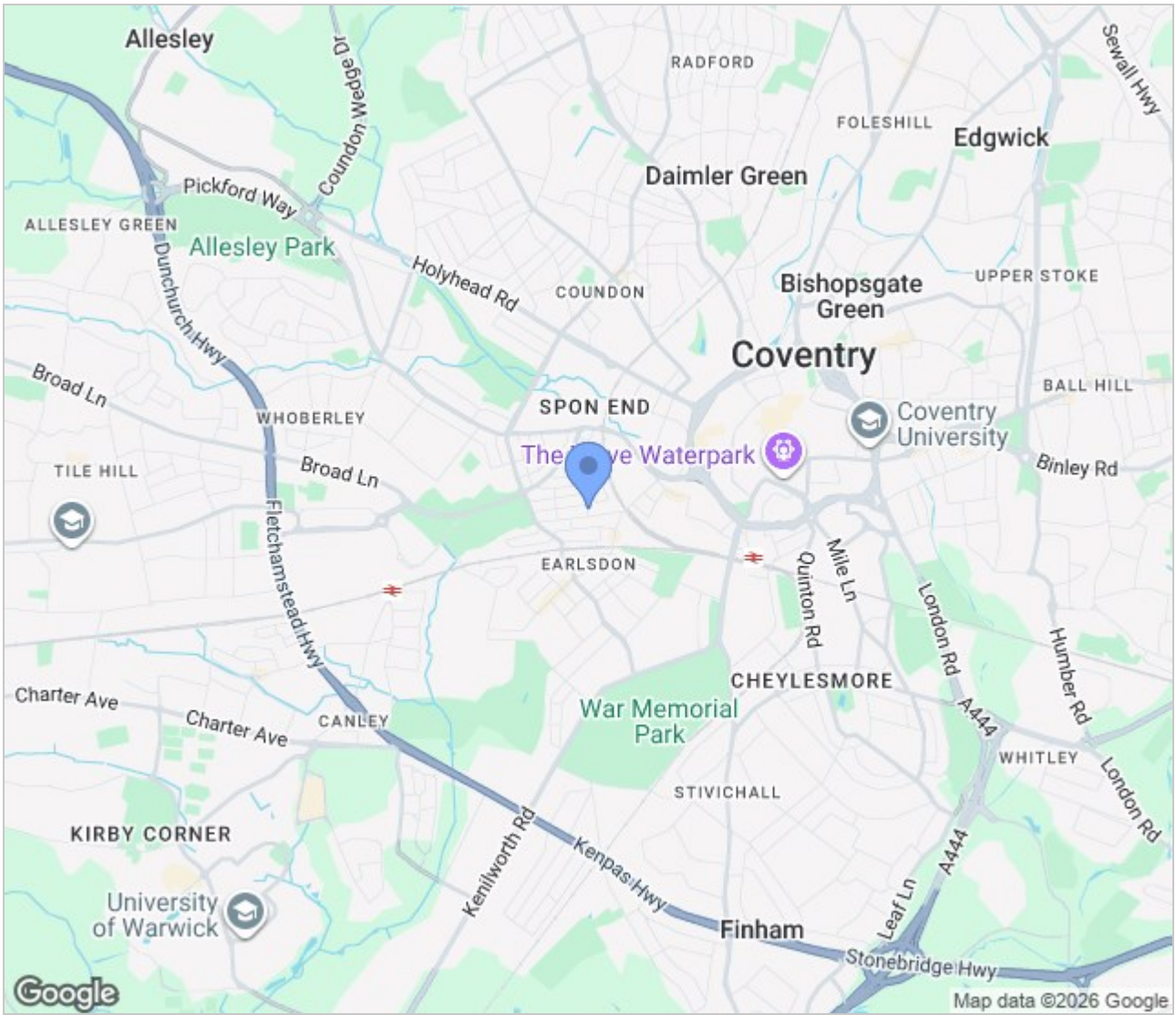
Shared areas include:

3 modern bathrooms/shower rooms shared between 7 tenants

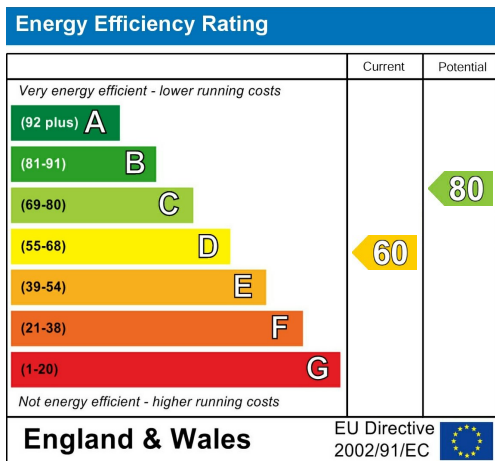
Large open-plan communal living & dining area – a great space to relax



Area Map



Energy Efficiency Graph



These particulars, whilst believed to be accurate are set out as a general outline only for guidance and do not constitute any part of an offer or contract. Intending purchasers should not rely on them as statements of representation of fact, but must satisfy themselves by inspection or otherwise as to their accuracy. No person in this firm's employment has the authority to make or give any representation or warranty in respect of the property.

GLB Property Services Ltd
9 Hay Lane
Coventry, CV1 5RJ

T. 02476 433416

info@glbpropertyservices.com
www.glbpropertyservices.com

