



## Apartment 103 25 Church Street , Manchester, M4 1PE

\*\*AVAILABLE 15TH JULY - PHYSICAL VIEWING REQUIRED - Spacious 2 bedroom, 1 bathroom fully furnished apartment on the 1st floor of 25 Church Street

\*\*NO CORPORATE LETTING or SHORT-TERM LETTINGS ALLOWED\*\*

\*\*NO Pets Allowed\*\*

Located on the 1st floor of the former BT Exchange Building, 25 Church Street houses loft style open plan converted apartments which ooze individual character with their exposed brickwork, sash windows, high ceilings, exposed beams and a Terence Conran designed kitchen with integrated appliances!!

**£1,500 PCM**

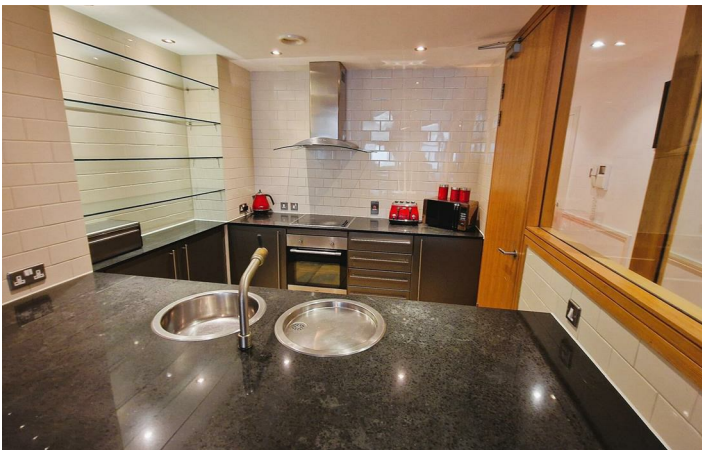
# Apartment 103 25 Church Street , Manchester, M4 1PE



- \*\*DEPOSIT FREE OPTION AVAILABLE\*\*
- 2 LARGE DOUBLE BEDROOMS
- 1 FULLY TILED BATHROOM
- FITTED KITCHEN WITH WASHER/DRYER & DISHWASHER
- FULLY FURNISHED
- ON SITE CONCIERGE
- SUITABLE FOR STUDENT OR PROFESSIONALS
- CLOSE TO PICCADILY TRAIN STATION
- IDEAL CITY CENTRE LOCATION
- \*\*NO PARKING\*\*



[Directions](#)



## Floor Plan



These particulars, whilst believed to be accurate are set out as a general outline only for guidance and do not constitute any part of an offer or contract. Intending purchasers should not rely on them as statements of representation of fact, but must satisfy themselves by inspection or otherwise as to their accuracy. No person in this firm's employment has the authority to make or give any representation or warranty in respect of the property.

Bridgewater House, 58-60 Whitworth Street, Manchester, M1 6LT  
 Tel: 01612388978 Email: [info@manlets.com](mailto:info@manlets.com) <https://manlets.com/>

| Energy Efficiency Rating                    |  | Current                 | Potential |
|---|--|-------------------------|-----------|
| Very energy efficient - lower running costs |  |                         |           |
| (92 plus) A                                 |  |                         |           |
| (81-91) B                                   |  |                         |           |
| (69-80) C                                   |  |                         | 71        |
| (55-68) D                                   |  |                         |           |
| (39-54) E                                   |  | 45                      |           |
| (21-38) F                                   |  |                         |           |
| (1-20) G                                    |  |                         |           |
| Not energy efficient - higher running costs |  |                         |           |
| <b>England &amp; Wales</b>                  |  | EU Directive 2002/91/EC |           |