



25 Martins Drive | Hertford | SG13 7TA

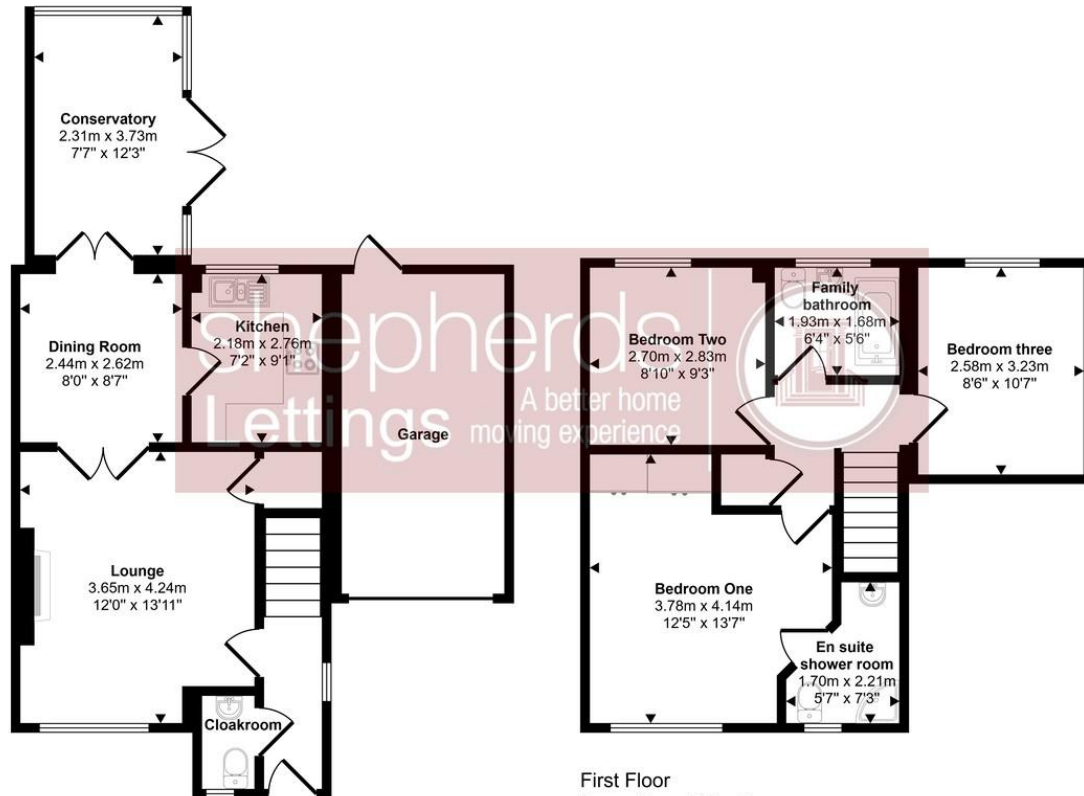
£2,100 pcm

A modern 3 bedroom detached home, boasting 3 reception rooms to include the conservatory. Private rear garden. Garage and driveway. Unfurnished. Council tax - E, EPC rating-D Deposit equal to 1 month's rent.

- 3 Bedroom detached home
- 3 reception rooms
- Peaceful cul de sac location
- 2 bathrooms
- Garage and driveway



Approx Gross Internal Area
102 sq m / 1099 sq ft



Ground Floor

Contact Details

6 Millbridge
Hertford
Hertfordshire
SG14 1PY

www.shepherdsofhertford.com
lettings@shepherdsofhertford.co.uk
01992 551955

Score	Energy rating	Current	Potential
92+	A		
81-91	B		83 B
69-80	C		
55-68	D	61 D	
39-54	E		
21-38	F		
1-20	G		

Agents Note: Whilst every care has been taken to prepare these sales particulars, they are for guidance purposes only. All measurements are approximate are for general guidance purposes only and whilst every care has been taken to ensure their accuracy, they should not be relied upon and potential buyers are advised to recheck the measurements