



## Manor House Way

Isleworth, TW7

£575,000

Situated in the heart of Old Isleworth, this well presented three double bedroom family home is ideally situated for access to a range of public transport including Isleworth train station, a choice of excellent local schools, the shops, cafes and bars of Old Isleworth and the idyllic Thames Riverside. Offered to the market with no forward chain, the ground floor offers a bright and spacious reception room with direct access to a private South facing rear garden, separate kitchen and downstairs wc. The first floor offers a large double bedroom with ample built in storage, second double bedroom with built in wardrobes and a family bathroom. The second floor offers a third double bedroom with internal storage and access to eaves storage. Externally the property benefits from a well kept south facing rear garden and a separate garage.

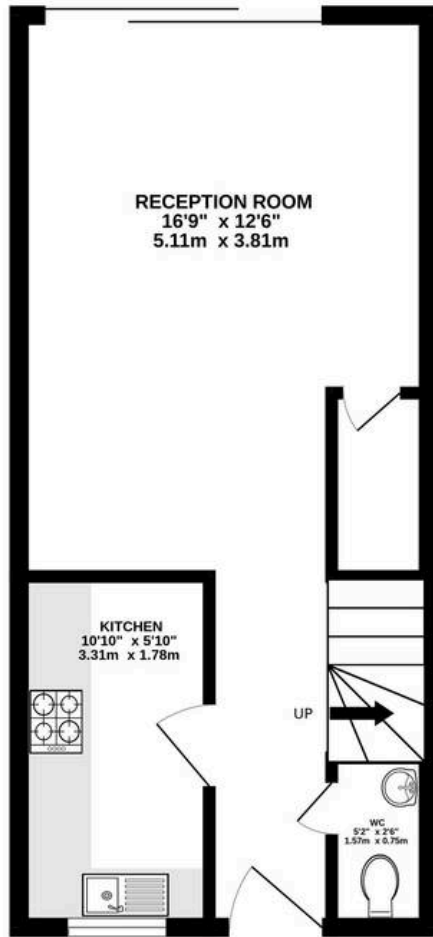
- No Forward Chain
- Three Double Bedrooms
- Downstairs WC
- Separate Garage
- Spacious Reception Room
- Close to the River Thames



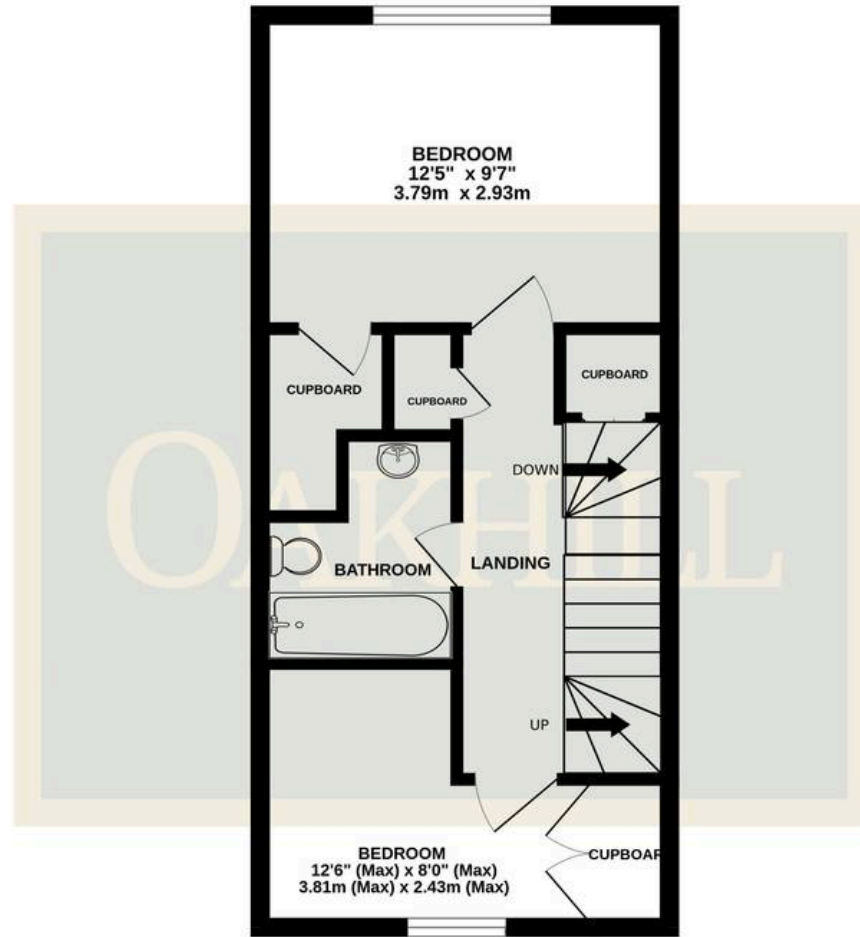
SCAN HERE  
FOR  
PROPERTY  
DETAILS



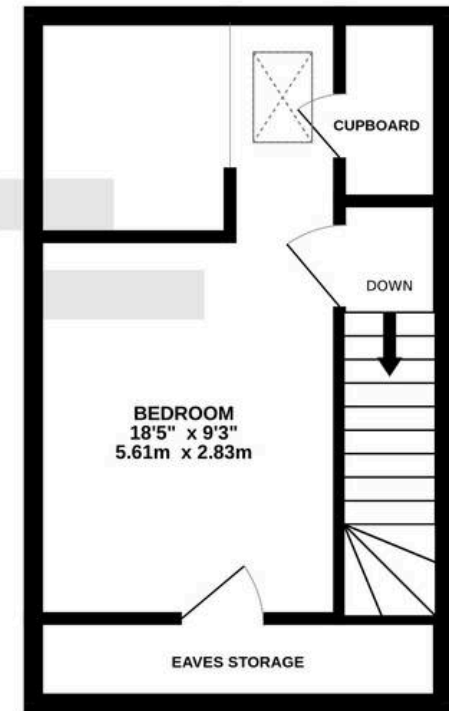
GROUND FLOOR



1ST FLOOR



2ND FLOOR



TOTAL FLOOR AREA : 936sq.ft. (87.0 sq.m.) approx.

Whilst every attempt has been made to ensure the accuracy of the floorplan contained here, measurements of doors, windows, rooms and any other items are approximate and no responsibility is taken for any error, omission or mis-statement. This plan is for illustrative purposes only and should be used as such by any prospective purchaser. The services, systems and appliances shown have not been tested and no guarantee as to their operability or efficiency can be given.  
Made with Metropix ©2026

