



22 Bull Drive, Kesgrave

Guide Price £290,000





22 Bull Drive

Kesgrave, Ipswich

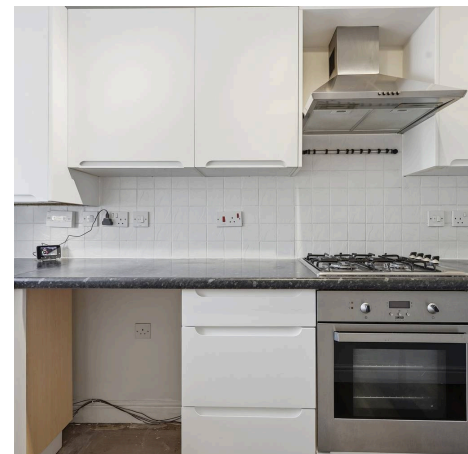
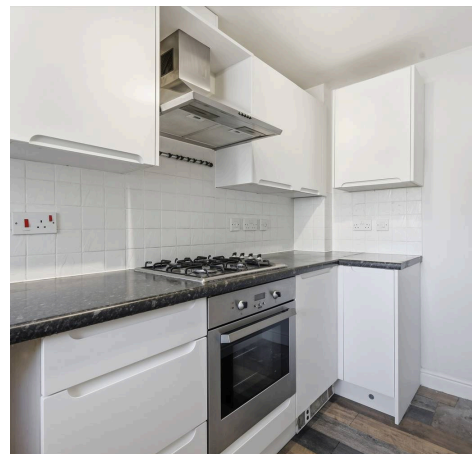
Council Tax band: B

Tenure: Freehold

EPC Energy Efficiency Rating: C

EPC Environmental Impact Rating: C

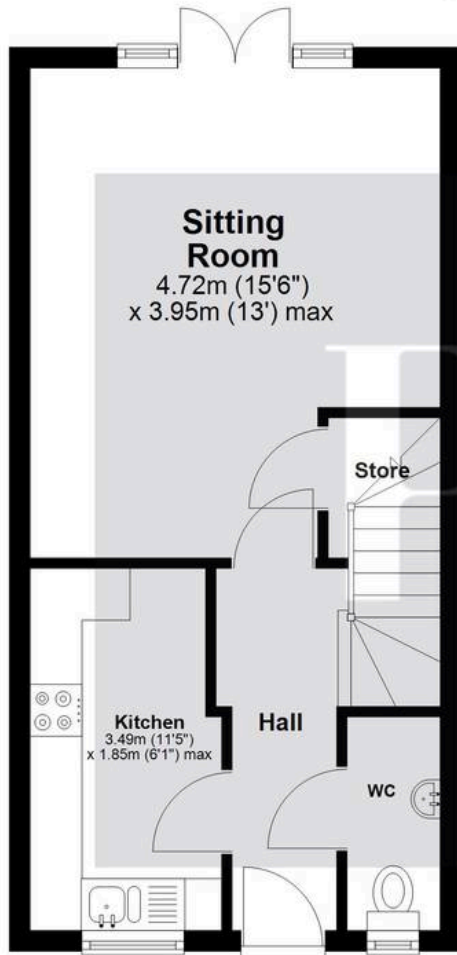
- No onward chain
- Three double bedroom townhouse
- Arranged over three floors
- Recently redecorated with new carpets throughout
- Spacious lounge/diner with doors to garden
- Principal bedroom with en-suite on top floor
- Modern fitted kitchen
- Ground floor cloakroom
- East-facing rear garden with decking and low maintenance garden
- Private carport with storage and off-road parking





Ground Floor

Approx. 32.8 sq. metres (353.3 sq. feet)



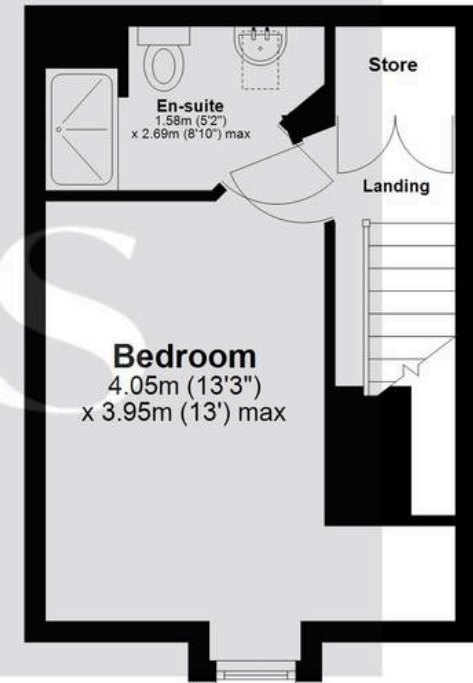
First Floor

Approx. 32.8 sq. metres (353.3 sq. feet)



Second Floor

Approx. 23.0 sq. metres (247.4 sq. feet)



Total area: approx. 88.6 sq. metres (954.0 sq. feet)

All measurements have been taken as a guide to prospective buyers only and are not precise. This plan is for illustrative purposes only and no responsibility for any error, omission or misstatement. The services, systems and appliances shown have not been tested and no guarantee as to their operability or efficiency can be given. Measurements may have been taken from the widest area and may include wardrobe/cupboard space. No guarantee is given to any measurements including total areas. Buyers are advised to take their own measurements.

© @modephotouk | www.modephoto.co.uk
Plan produced using PlanUp. □

Bull Drive, Kesgrave



Potters Estate Agents

Potters Estate Agents, 6 Market Hill - IP12 4LU

01394 447487 • enquiries@pottersestateagents.com • www.pottersestateagents.com/