

41 Jackwood Green, £125,000

RICHMOND
VILLAGES

Part of Bupa

(Other charges apply)

FF

2



1



EPC - C



2 bedroom first floor apartment

We are delighted to offer this beautifully decorated two-bedroom independent living apartment, ideally positioned within Richmond Villages Bede and just moments from the village's outstanding on-site amenities. Designed for comfort, style and ease of living, this elegant home is ready to move straight into.

Specification

- Modern fitted kitchen with range of wall and base units and integrated appliances including fridge/freezer, and oven and hob.
- The generously sized living room is beautifully proportioned and enjoys spectacular views across the bowling green.
- The large bedroom is a light and airy space with plenty of room for storage and a built-in wardrobe
- The second bedroom is light and airy.
- A large bathroom has a WC and wash hand basin, storage space and a corner shower cubical.
- TV and satellite points*.
- Well stocked flower borders and lawns maintained by the Village Gardeners.
- Allocated parking space for one car.



*Satellite subscription not included.

Important Notice: These particulars are intended to give a fair and substantially correct overall description. **Other fees and charges apply**, please contact the Village Advisers for further details. Properties are sold on a 125 year lease and this property has 112 years remaining.

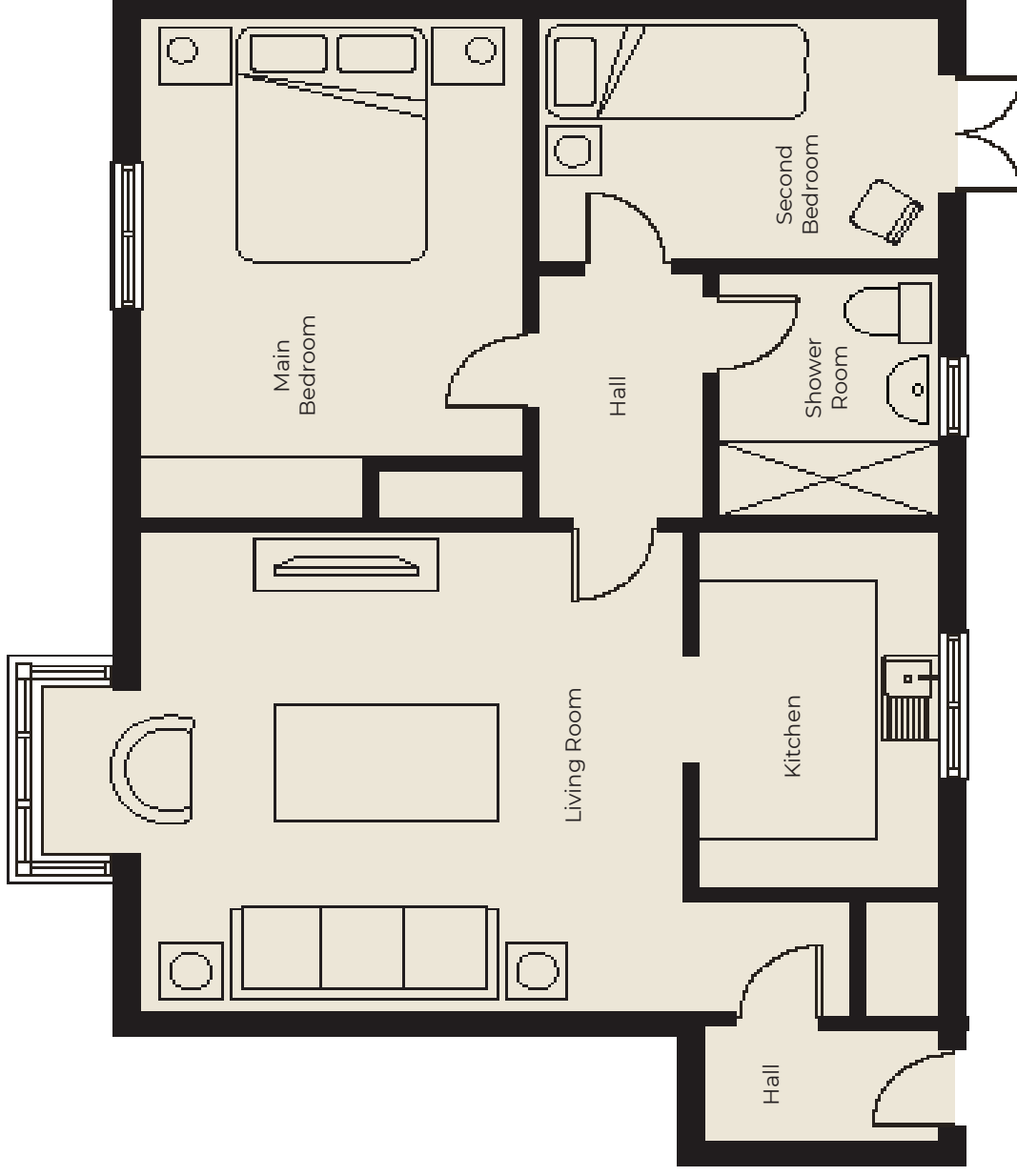
02476 645 544

bedevillage@richmond-villages.com

Richmond Villages Bede,
Hospital Lane, Bedworth, Warwickshire CV12 0PB

41 Jackwood Green

First Floor



| | |
|-----------------------|----------------------------------|
| Kitchen | 2042mm x 3017mm 6'7" x 9'9" |
| Living Room | 4175mm x 4048mm 13'7" x 13'4" |
| Main Bedroom | 2956mm x 3688mm 9'7" x 12'1" |
| Second Bedroom | 3108mm x 1859mm 10'2" x 6'10" |
| Shower Room | 1798mm x 2072mm 5'9" x 6'8" |

These particulars are intended to give a fair and substantially correct overall description.

Measurements have been taken at 1500mm skimming height.

All dimensions are approximate. Bedroom measurements include the wardrobe if applicable. Room measurements include bay windows if applicable.

Furniture layout is to give an indicative impression. Although all efforts have been made to ensure its accuracy at time of print dimensions, fixtures, fittings, finishes and specifications are subject to change without notice.

The properties are sold unfurnished.

