



3 Hillary Close
Burton Latimer, NN15 5FF



Simpson & Partners

Upon entering, you will find a welcoming open plan living area that seamlessly combines the kitchen and lounge, creating a perfect space for relaxation and entertaining. The kitchen is equipped with built-in appliances, making it both functional and stylish. The flat features two well-proportioned bedrooms, providing ample space for a small family or individuals looking for a comfortable home. The bathroom is conveniently located, ensuring ease of access for all residents.

Additionally, the property boasts useful storage space in the hallway, allowing for a tidy and organised living environment. An allocated parking space is also included, providing convenience for those with vehicles.

Situated in a peaceful neighbourhood, this flat is ideal for anyone looking to enjoy the benefits of community living while still being close to local amenities. Burton Latimer offers a range of shops, parks, and schools, making it a desirable location for families and professionals alike.

This flat presents a fantastic opportunity to enter the property market with a shared ownership scheme, making it an attractive option for first-time buyers or those looking to downsize. Do not miss the chance to make this lovely flat your new home.

We have been advised the current charges are as follows;

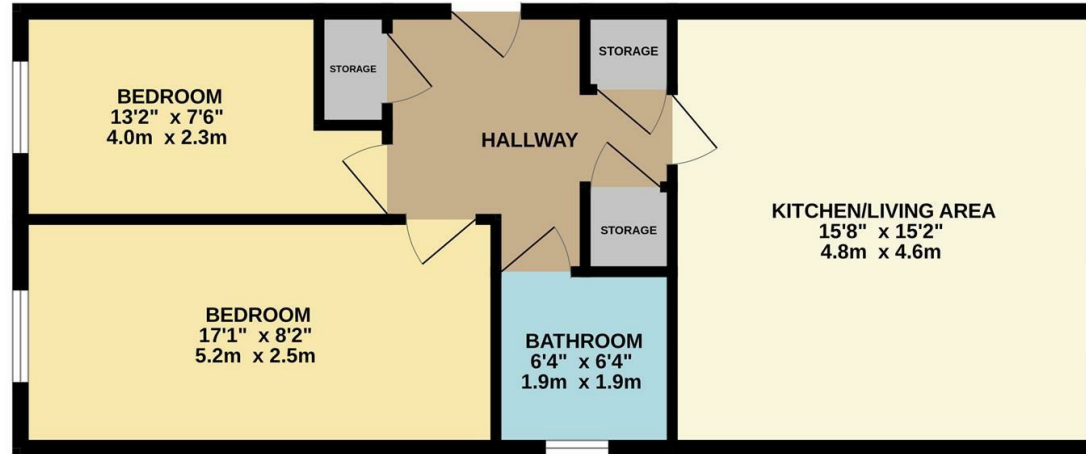
Rent- £253.53 per month

Service Charge - £101.41 per month

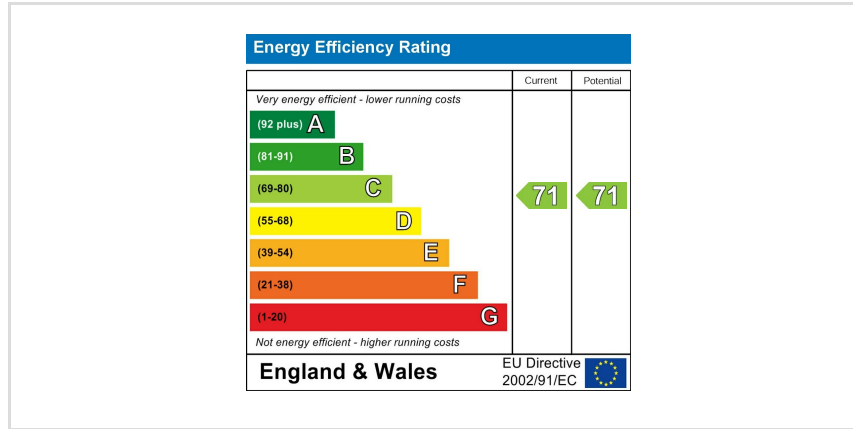
Price £54,250



GROUND FLOOR



Whilst every attempt has been made to ensure the accuracy of the floorplan contained here, measurements of doors, windows, rooms and any other items are approximate and no responsibility is taken for any error, omission or mis-statement. This plan is for illustrative purposes only and should be used as such by any prospective purchaser. The services, systems and appliances shown have not been tested and no guarantee as to their operability or efficiency can be given.
Made with Metropix ©2026



When you buy with Simpson and Partners, you know **you'll be in safe hands**. From the moment you walk through our doors, we'll make you **feel truly welcome**. Our sales consultants and financial advisors will take you through **every step of the process**, offering **free expert advice** along the way, from help choosing the right mortgage and insurance through to finding your conveyancer. And if you need help selling your home too, **with over 20 years of local experience, you can trust us to get you moving**.



**Simpson
& Partners**

Making Every
Journey Personal



01536 518200

kettering@simpsonandpartners.co.uk

<https://www.simpsonandpartners.co.uk/>

1 Silver Street, Kettering, Northants, NN16 0BN