

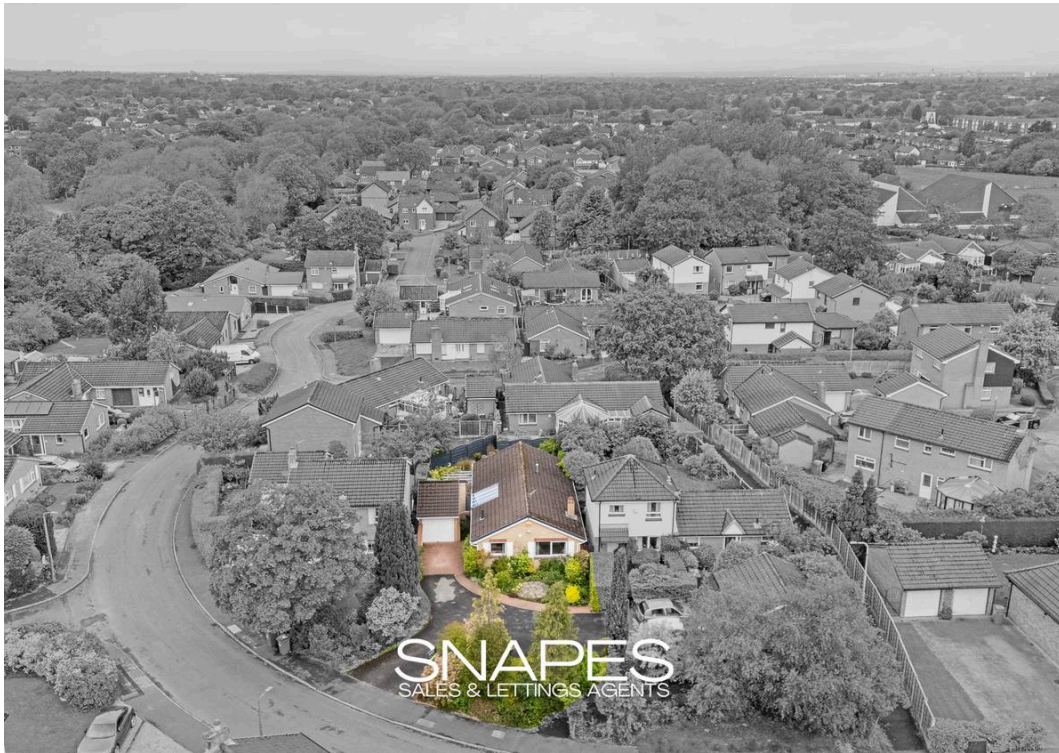


Twining Brook Road, Cheadle Hulme. SK8 5RJ

£450,000

SNADES
SALES & LETTINGS AGENTS





Twining Brook Road

Cheadle Hulme, Cheadle

Council Tax band: E

Tenure: Freehold

EPC Energy Efficiency Rating: C

EPC Environmental Impact Rating:

- Immaculately Presented Three Bedroom Detached Bungalow
- Lovely Sized Private Plot
- Entrance Hallway With Storage & Modern Fitted Kitchen
- Superb Sized Living Room & Dining Area With Vaulted Ceiling
- Porch/Conservatory
- Three Good Sized Bedrooms
- Stylish Shower Room
- Private Garden To Rear With Generous Frontage
- Detached Garage & Driveway Parking
- Freehold





Master Bedroom

11' 9" x 9' 8" (3.59m x 2.94m)

Bedroom Two

8' 10" x 11' 5" (2.70m x 3.48m)

Bedroom Three

8' 4" x 8' 6" (2.55m x 2.60m)

Living Room & Dining Room

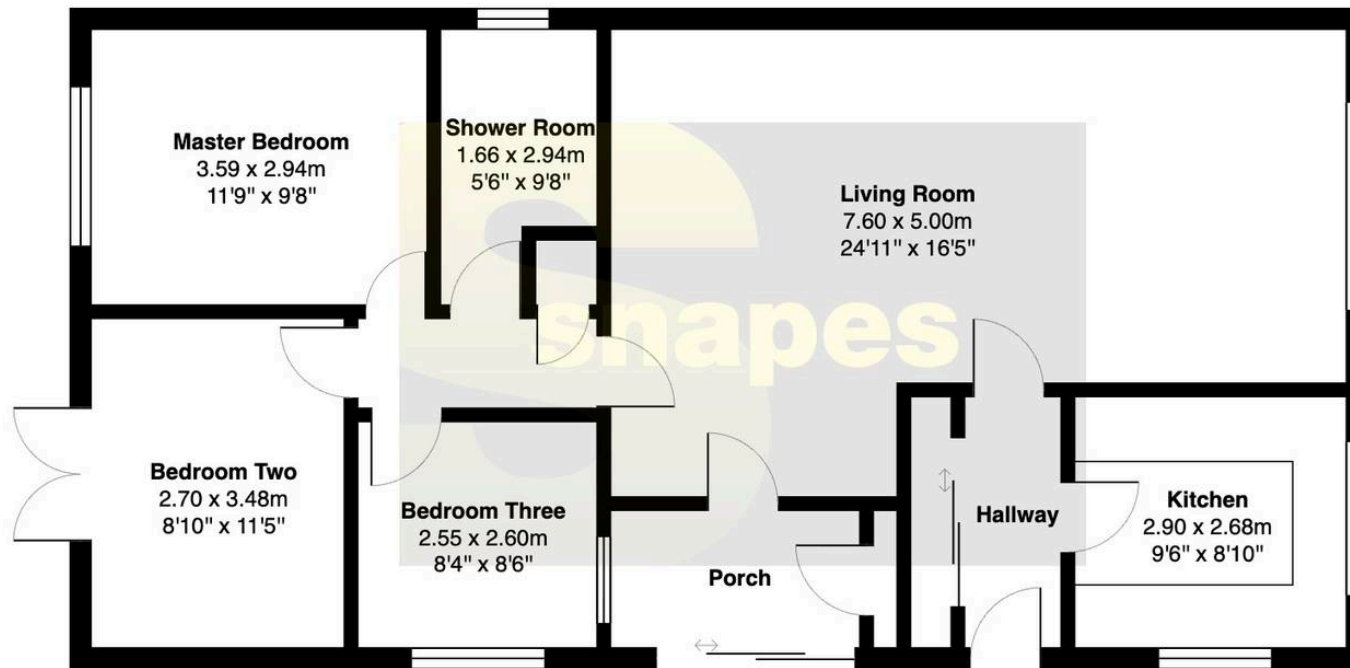
24' 11" x 16' 5" (7.60m x 5.00m)

Kitchen

9' 6" x 8' 10" (2.90m x 2.68m)







Total Area: 89.1 m² ... 959 ft²

All measurements are approximate and for display purposes only

Cheadle Hulme Office

Andrew Snape Estate Agents, 31 Station Road – SK8 5AF

0161 485 2244 • cheadlehulme@snapes.co.uk • www.snapes.co.uk/