



PEAR
PROPERTIES



Eldon Road, Worthing

Offers Over £350,000



Eldon Road

Worthing

Charming two bed Victorian end terrace with original features, spacious rooms, garden, off street parking, and prime location near seafront and town centre.

Early viewing recommended.

Council Tax band: B

Tenure: Freehold

- Victorian End Terrace Home
- Lots Of Character With Original Features
- Through Lounge/Dining Room With Fireplace & Bay Window
- Two Double Bedrooms
- Large Bathroom With Separate WC
- Spacious Kitchen With Double Doors Opening To Garden
- Enclosed & Well Established Garden
- Versatile Garden Room/Workshop
- Off Street Parking
- Fantastic Location South Of The Railway Line - Seafront & Town Close By



Living / Dining Room

22' 11" x 11' 2" (6.98m x 3.41m)

A through lounge/dining room with a bay window to front and window overlooking the garden and an understairs storage cupboard.

Kitchen

14' 2" x 8' 10" (4.32m x 2.70m)

A spacious kitchen with a range of wall and base units with space for a number of appliances, side window and double doors to the garden.

Bedroom 1

14' 7" x 11' 5" (4.44m x 3.47m)

Large double bedroom with a front bay window and feature fireplace.

Bedroom 2

11' 1" x 9' 6" (3.39m x 2.89m)

Double bedroom with a window overlooking the rear garden.

Bathroom

10' 8" x 8' 7" (3.25m x 2.62m)

Large bathroom with a bath and separate shower, worktop with inset wash basin. Obscured window to garden.

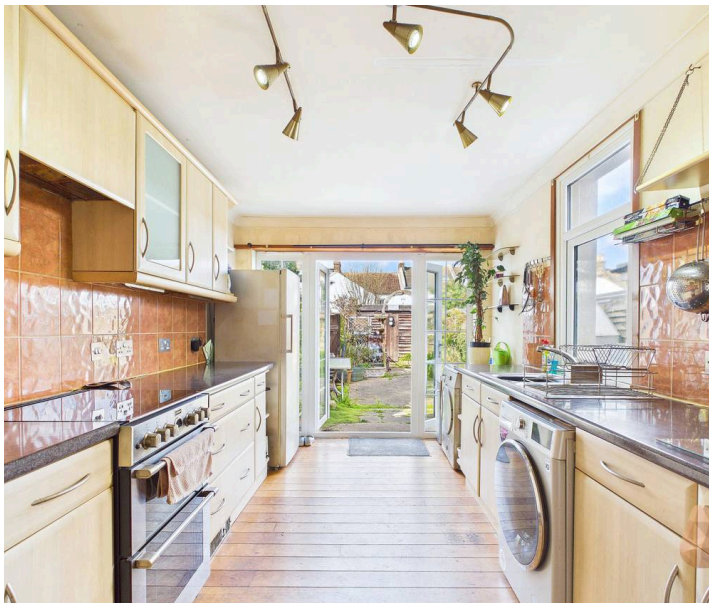
WC

3' 7" x 2' 10" (1.09m x 0.86m)

Low level WC with a side window.

Garden Room

11' 4" x 9' 5" (3.46m x 2.88m)



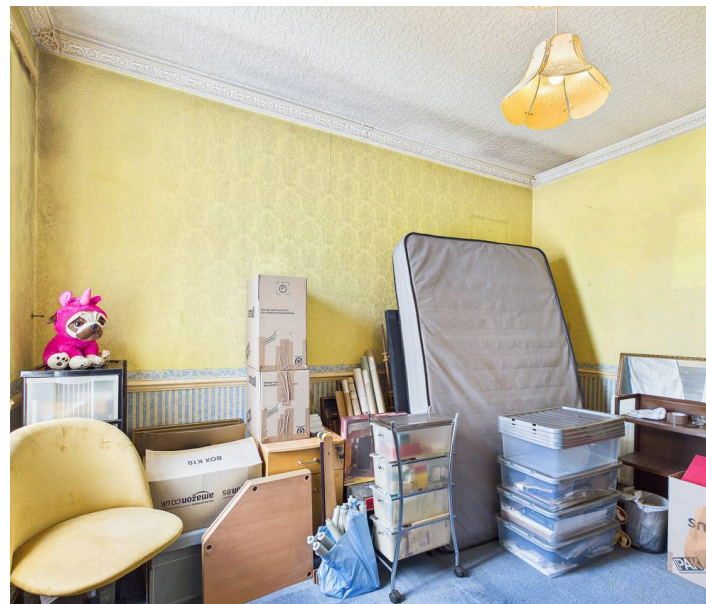
GARDEN

An established rear garden with a side gate offering access.

OFF STREET

1 Parking Space

Block paved driveway to front.





Ground Floor Building 1



Floor 1 Building 1



Ground Floor Building 2

Approximate total area⁽¹⁾

91.8 m²

988 ft²

(1) Excluding balconies and terraces

Calculations reference the RICS IPMS 3C standard. Measurements are approximate and not to scale. This floor plan is intended for illustration only.

GIRAFFE360



Pear Properties

20 Crabtree Lane, Lancing - BN15 9QP

01903 947337 · hello@pearproperties.uk · pearproperties.uk