



## Ashley Gardens, SW1P

£1,150 Per week

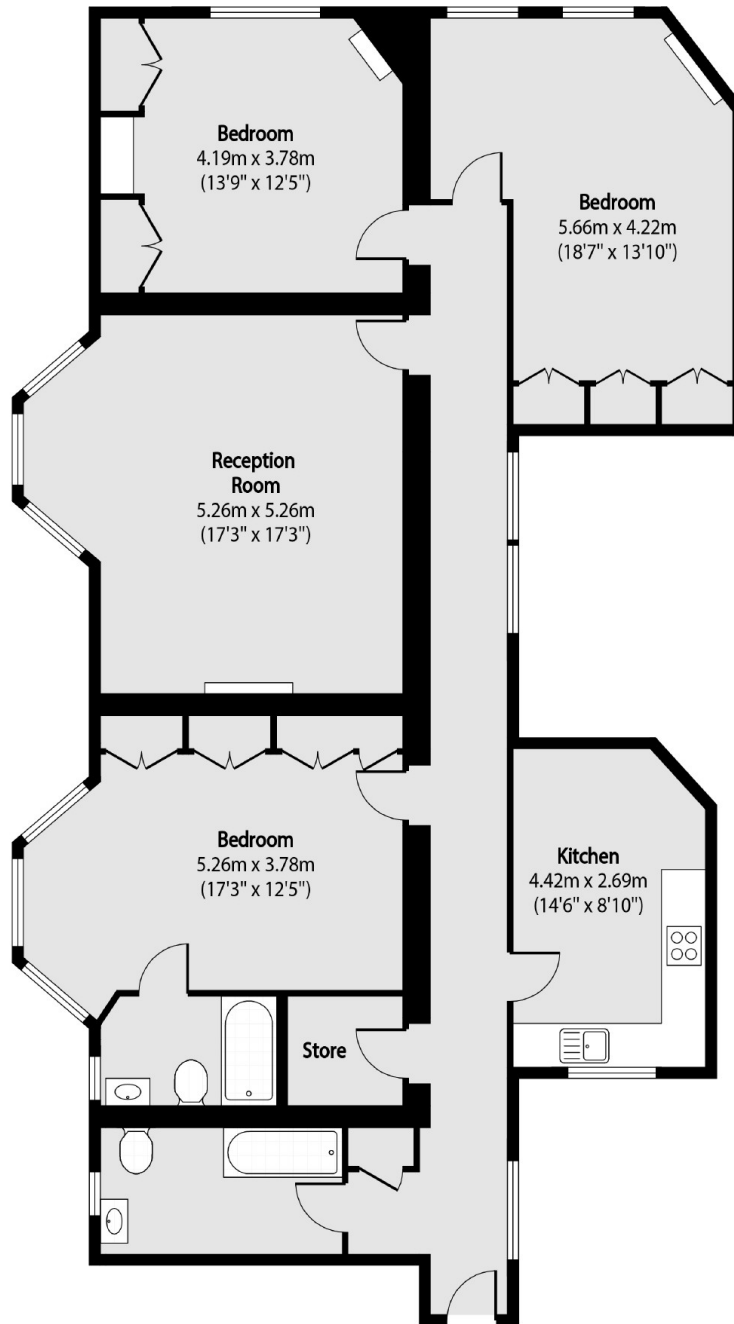
Within the environs of Westminster Cathedral, this is an elegant purpose-built three bedroom Victorian mansion flat with high ceilings, spacious rooms and period features.

Thirleby Road is located a few minutes from a variety of shops and fashionable restaurants on Victoria Street and there are excellent transport facilities at Victoria transport hub including the Gatwick Express.

### Features

- Three Double Bedrooms
- Second Floor with Lift
- 24-Hour Portage
- Spacious Reception Room
- High Ceilings
- Kitchen/Diner

# Ashley Gardens, London, SW1P



Total area (approx): 131.27 sq m (1413 sq. ft)