
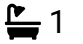



Woodmount, Crockenhill, Swanley, BR8 8ER

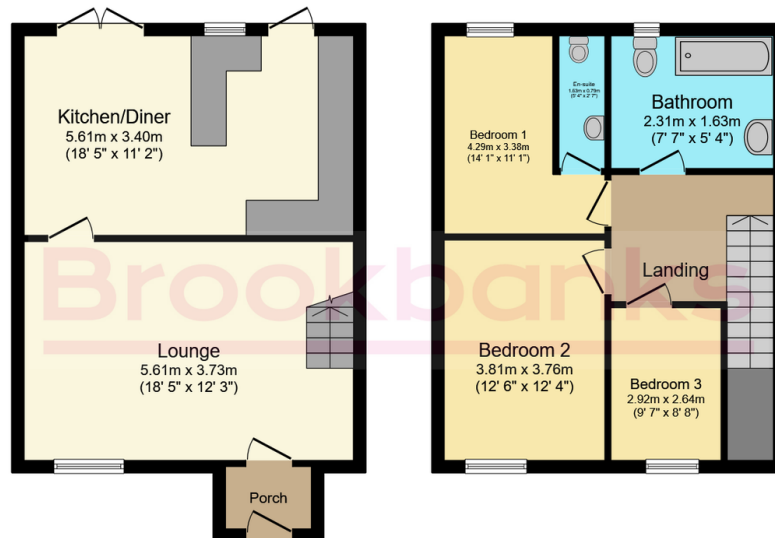
£400,000

 3  1  1



- Three well-proportioned double bedrooms
- Terraced house in the desirable village of Crockenhill
- Welcoming front porch entrance
- Bright and spacious open-plan lounge
- Generous kitchen/diner to the rear
- Direct access to a good-sized rear garden
- Family bathroom on the first floor
- Additional en suite toilet to one bedroom
- Two allocated parking spaces at the rear
- Ideal layout for family living and entertaining

11 Woodmount, Crockenhill, Swanley, BR8 8ER



Ground Floor
Floor area 42.3 sq.m. (456 sq.ft.)

First Floor
Floor area 40.6 sq.m. (437 sq.ft.)

Total floor area: 83.0 sq.m. (893 sq.ft.)

This floor plan is for illustrative purposes only. It is not drawn to scale. Any measurements, floor areas (including any total floor area), openings and orientations are approximate. No details are guaranteed, they cannot be relied upon for any purpose and do not form any part of any agreement. No liability is taken for any error, omission or misstatement. A party must rely upon its own inspection(s). Powered by www.Propertybox.io

Brookbanks

A well-presented three-bedroom terraced home in the sought-after village of Crockenhill, featuring a front porch leading into a bright open-plan lounge. To the rear, a spacious kitchen/diner overlooks and opens onto a good-sized garden, ideal for everyday living. Upstairs offers three double bedrooms, including one with an en suite toilet, along with a family bathroom. The property also benefits from two parking spaces to the rear.