

CHARMILL

RESIDENTIAL

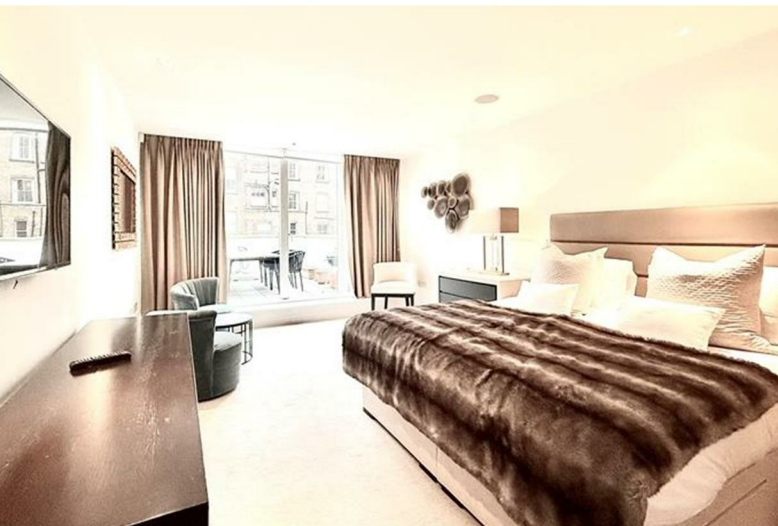


Imperial House, Kensington W8

£1,950



Young Street



Description

A fabulous two bedroom contemporary apartment set over 1381 SQ FT with a large private terrace in the heart of Kensington. Located on the first floor of this small portered block the apartment comprises a fully fitted kitchen, large reception room, a master bedroom which benefits from an en-suite bathroom and walk-in wardrobe and an additional double bedroom with an en-suite bathroom.

Further benefits include a rare spectacular private roof terrace to the rear of the property allowing for a perfect space for private entertaining. Imperial House, is in the heart of fashionable Kensington which is situated and conveniently located for international designer shops and restaurants off Kensington High Street.

This prime location is also within easy walking distance to the wide open spaces of Kensington Palace, V & A and Science Museum, as well as the Imperial College, and The Royal Albert Hall, and is within easy access to South Kensington (Piccadilly, District and Circle lines), underground station.

- On-site porter
- CCTV
- Pet friendly
- High quality finish
- Available furnished or unfurnished
- Dedicated building manager
- Desirable location

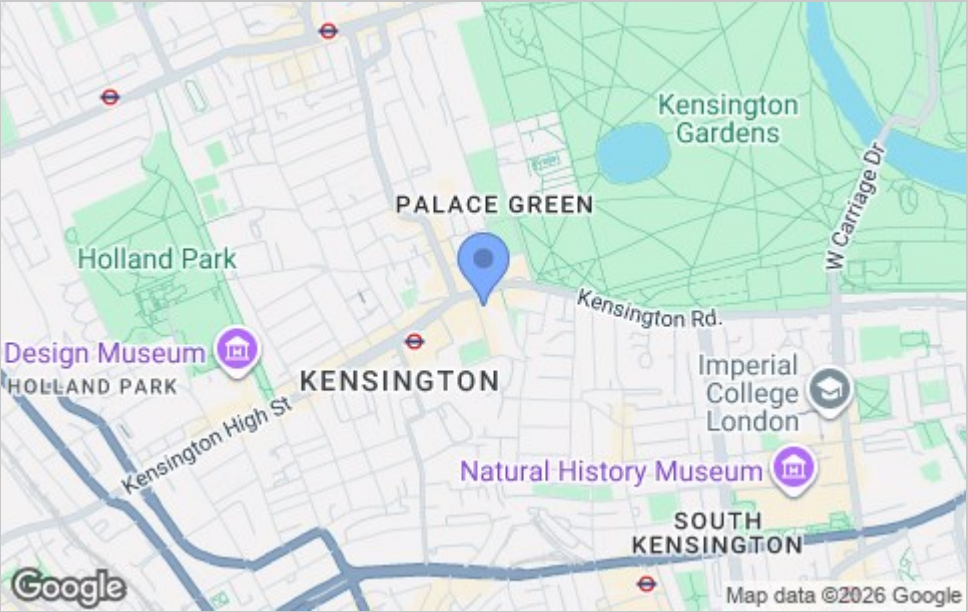




Floor Plan



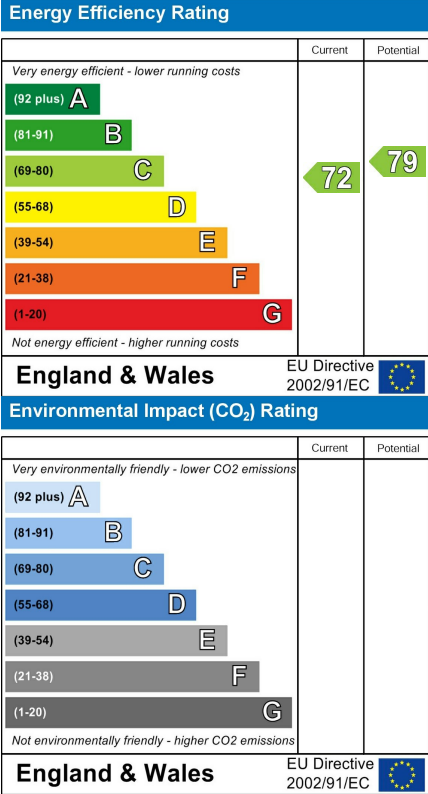
Area Map



Viewing

Please contact us on 020 7046 6275 if you wish to arrange a viewing appointment for this property or require further information.

Energy Efficiency Graph



These particulars, whilst believed to be accurate are set out as a general outline only for guidance and do not constitute any part of an offer or contract. Intending purchasers should not rely on them as statements of representation of fact, but must satisfy themselves by inspection or otherwise as to their accuracy. No person in this firms employment has the authority to make or give any representation or warranty in respect of the property.

020 7046 6275 • sales@charmillresidential.co.uk • 51 Maida Vale, Little Venice, London W9 1SD
charmillresidential.co.uk