



Leman Street

London, E1

£3,900 per month
(£900 per week)

Video Viewing Available The property is comprising an open plan kitchen/reception area, two double bedrooms, two bathrooms and three balconies. Property benefits from a 24hr Concierge and underground parking.



Leman Street

London, E1

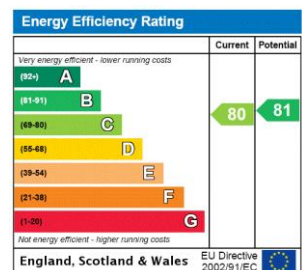
- Two Double Bedrooms
- Two Bathrooms
- Three Balconies
- Underground Parking
- 24hr Concierge



The property is arranged over two floors offering luxury living space from top to bottom, comprising a generous open plan kitchen/reception area, equipped with Miele appliances and stylish breakfast bar with access to a private balcony, two large double bedrooms and two contemporary style bathrooms. Finished to a very high standard throughout with bespoke fixtures and fittings and the added benefit of a 24hr Concierge for the development and secure underground parking included.

Located near Tower Hill and Aldgate stations, also a convenient short walk to Liverpool street and Spitalfields.

Minimum Term: months
Deposit Required: £4,500.00
Local Authority: Tower Hamlets
Council Tax Band: G
EPC Rating: C
Furnished



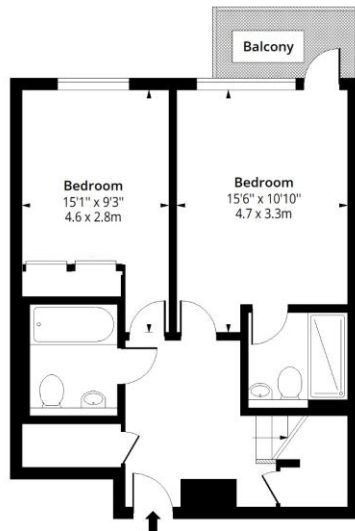
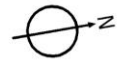
Chestertons Tower Bridge Lettings

220 Tower Bridge Road
 Tower Bridge
 London
 SE1 2UP
 lettings.towerbridge@chestertons.co.uk
 02073576911
 chestertons.co.uk

Additional tenant charges apply (fees apply to non-AST tenancies only)
 Tenancy Agreement Fee: £300
 References per Tenant/Guarantor: £60
 Inventory check (approx. £100 – £250 inc. VAT)
 chestertons.co.uk/property-to-rent/applicable-fees

Christopher Court

Approx. Gross Internal Area 927 Sq Ft - 86.12 Sq M (Excluding Balcony)
Approx. Gross Internal Area 1185 Sq Ft - 110.09 Sq M (Including Balcony)



Fourth Floor

Floor Area 517 Sq Ft - 48.03 Sq M



Fifth Floor

Floor Area 410 Sq Ft - 38.09 Sq M

Floor plan is for illustrative purposes only and is not to scale. Every attempt has been made to ensure the accuracy of the floor plan shown, however all measurements, fixtures, fittings and data shown are an approximate interpretation for illustrative purposes only.

lpaplus.com

