



## Netherwood Road, W14

£692 Per week

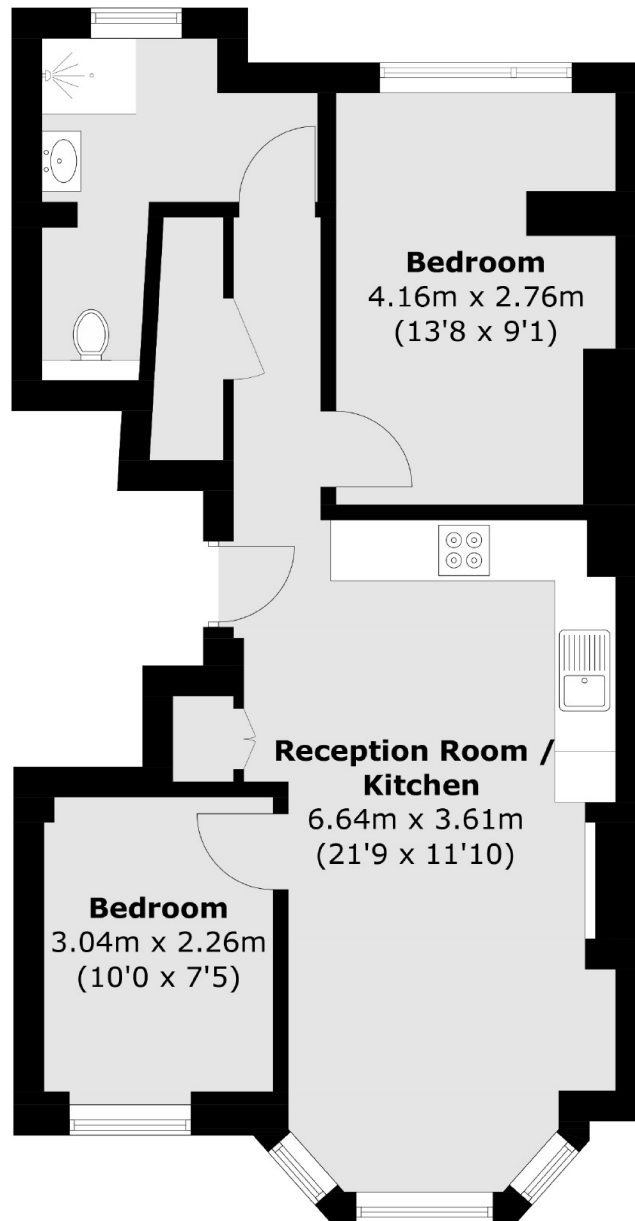
A well presented and recently refurbished two bedroom apartment in the heart of Brook Green. This property has been carefully thought out, offering a spacious kitchen, dining and living area, two double bedrooms, a modern bathroom and plenty of natural light.

The property is located close to Brook Green, and the amenities of Westfield shopping centre, the Television Centre and Soho House within easy reach. The closest stations are to be found at Shepherds Bush - Central line and Overground; Kensington Olympia; and Goldhawk Road.

### Features

- Two Bedrooms
- Recently Refurbished
- Parquet Flooring
- Brook Green
- Central Line

# Netherwood Road, London, W14



Total area (approx.): 52.8 sq. m (568.3 sq. ft)