



Rothesay Avenue

Richmond, TW10

£6,000 per month
(£1,384.62 per week)

A beautiful four bedroom semi-detached house. This home boasts lots of space throughout, comprising a bright living and open plan dining space with modern fitted kitchen. You can access the large and attractive garden from the kitchen. There is an additional downstairs WC.

On the first floor there are two spacious double bedrooms and a modern family bathroom, along with a smaller double room ideal for an office. The top floor comprises the master bedroom with en-suite, and plenty of storage space.

The property is located close by to great schools such as Sheen Mount, Marshgate and Holy Trinity. Richmond Park is also a short distance away and Mortlake train station is easily accessible.

CHESTERTONS



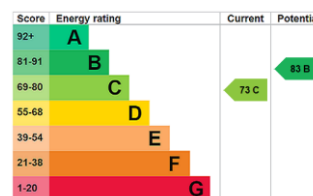
Rothesay Avenue

Richmond, TW10

- Four Bedrooms
- Two Bathrooms
- Private Garden
- Off Street Parking



Minimum Term: 12 months
Deposit Required: £6,923.08
Local Authority: London Borough of Richmond upon Thames
Council Tax Band: F
EPC Rating: C
Unfurnished

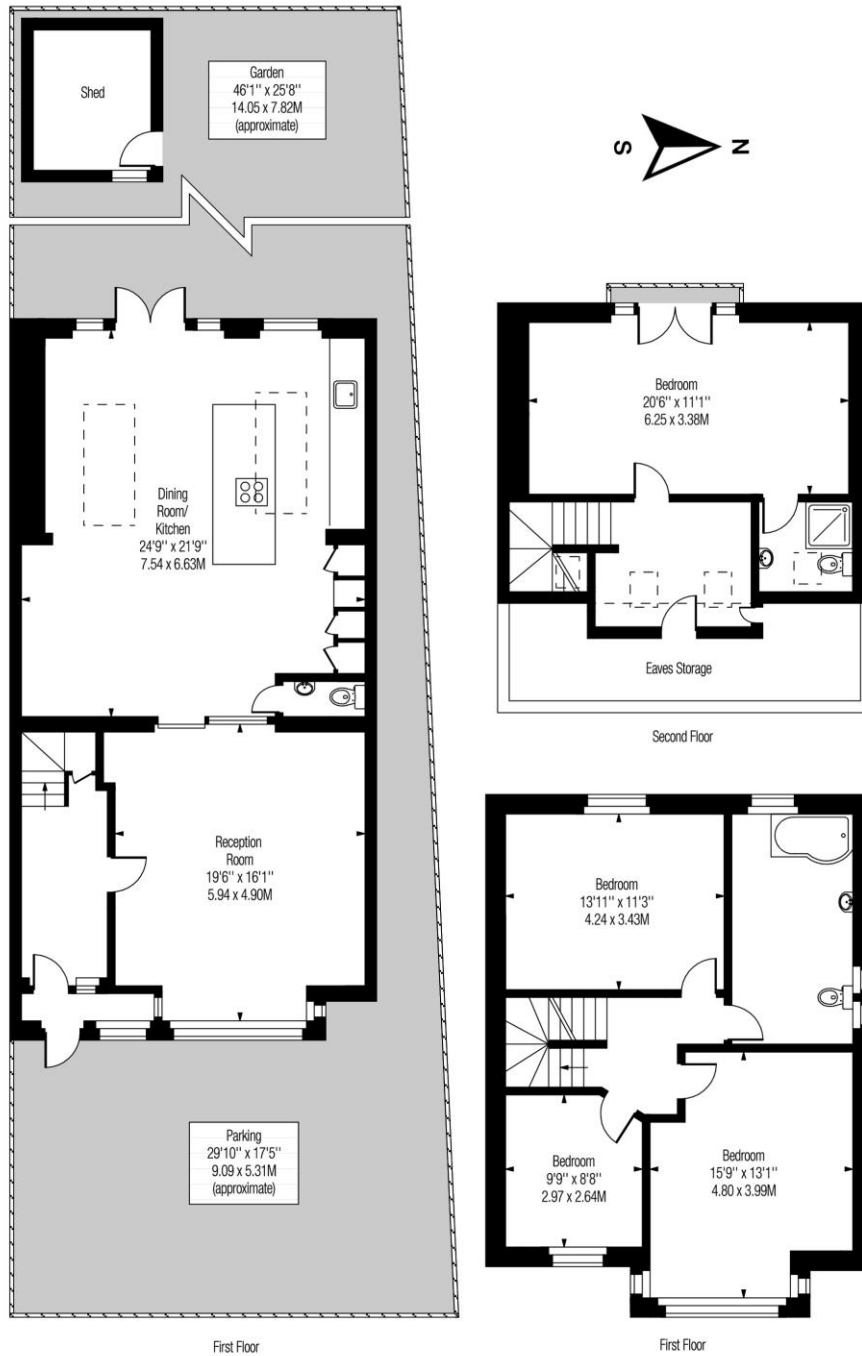


Chestertons East Sheen Lettings

254a Upper Richmond Road West
 East Sheen
 London
 SW14 8AG
sheenlettingsusers@chestertons.co.uk
 02081040580
chestertons.co.uk

Additional tenant charges apply (fees apply to non-AST tenancies only)
 Tenancy Agreement Fee: £300
 References per Tenant/Guarantor: £60
 Inventory check (approx. £100 – £250 inc. VAT)
chestertons.co.uk/property-to-rent/applicable-fees

Rosethey Avenue, TW10



Approx Gross Internal Area

2117 Sq Ft - 196.67 Sq M

Includes Limited Use Area and Eaves Storage - 136 Sq Ft

Excludes Shed - 83 Sq Ft

Drawn in Accordance with IPMS 3B: Residential

Illustration For Identification Purposes Only - Not to Scale

www.homespacestudio.co.uk - Ref. No. 52829

