



Regents Quay,  
Brewery Wharf

ZENKO  
CITY LIVING

# FOR SALE

**£189,950**

---

A SPACIOUS TWO BEDROOM APARTMENT WITH TWO DOUBLE  
BEDROOMS AND BALCONY OVER THE GARDENS



























2

Bedrooms

---

2

Bathrooms

---

710

Sq. Ft.

---



# ABOUT

---

A very well-presented apartment within a well established building in a riverside location. Many of the city's amenities are within easy walking distance including the General Infirmary (28 mins), the Law Courts (22 mins), the Railway Station (14 mins), the Business District and the main shopping areas of Trinity (9 mins) and Victoria Gate (10 mins)

SPACIOUS OPEN PLAN LIVING AREA

ONSITE GYM (ONE OFF FEE APPLIES)

TWO DOUBLE BEDROOMS EACH WITH FITTED WARDROBES

ONSITE CONCIERGE

RIVERSIDE DEVELOPMENT WITH A GOOD RANGE OF  
LOCAL AMENITIES

EPC: B

FIRST FLOOR

COUNCIL TAX BAND: D

BALCONY OVERLOOKING THE COURTYARD GARDENS

LEASEHOLD





# ABOUT.. continued

---

Brewery Wharf is a scheme of 305 apartments set within 5 individual blocks. Built by Barratt Developments in 2005 the development sits on the south bank of the River Aire. There is an onsite concierge, landscaped gardens, onsite gymnasium and direct access to the riverside. The wider development offers onsite amenities including Sainsburys Local, Cafe Yum Yum and 212 cafe and bar.

We are advised of the following leasehold charges:

Ground Rent: £315.98 P.A reviewed every 20 years in accordance with RPI

Next ground rent review: 1st Jan 2042

Service Charge: £3281.28 PA + Ad-Hoc communal electricity contribution approx £350 PA

Lease Term: 999 years from 2002

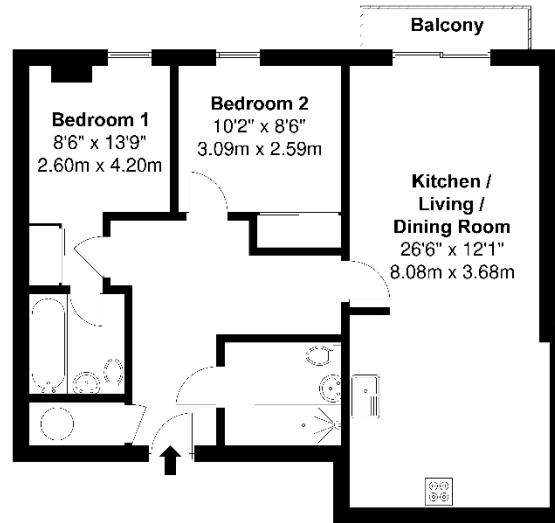








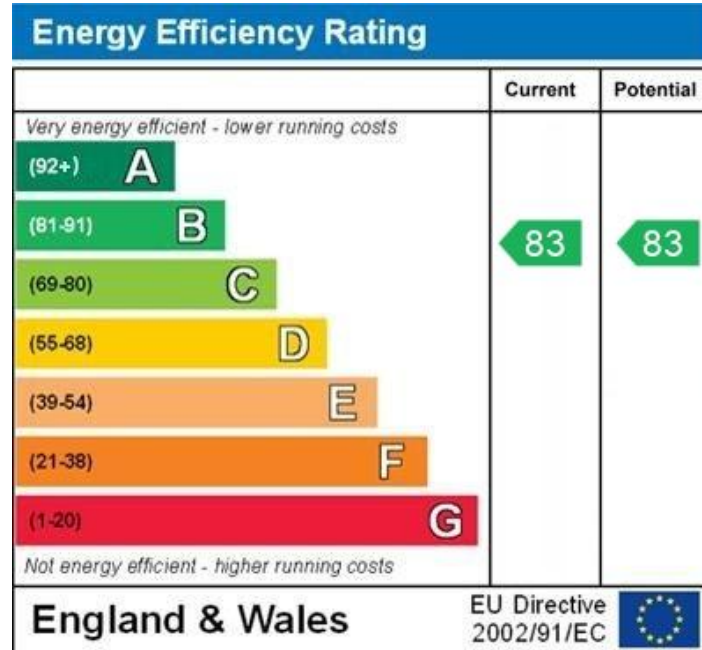
# Floorplan



Approx. Gross Internal Floor Area = 66 sq m / 710 sq ft  
Illustration for identification purposes only, measurements are approximate, not to scale.



# EPC



WWW.EPC4U.COM



## Lease information

999 from  
2002

Lease length

---

£3281  
P.A

Service charge

---

£315  
P.A

Ground rent

---



For more information or to arrange a viewing contact  
**Ian Darley, Zenko Properties**



Zenko Properties, Graphical  
House, 2 Wharf Street Leeds,  
LS2 7EQ



0113 247 0777



ian@zenkoproperties.co.uk



[www.zenkoproperties.co.uk](http://www.zenkoproperties.co.uk)



**ZENKO**  
CITY LIVING