



OAKFIELD



Poplar Close, Bexhill-On-Sea, TN39 5JU

£850 Per Calendar Month



1



1



1



C

## Poplar Close, Bexhill-On-Sea, TN39 5JU

This well-presented one double bedroom second floor flat is situated in a purpose built block set in the sought after Bexhill Downs location, located within walking distance to One Stop, bus routes and other local shops and amenities and close proximity to the Bexhill Town Centre.

Internally, the property comprises of a entrance hall with large storage cupboard, a modern fitted kitchen with integrated oven and hob and space for other appliances, an open plan spacious living room, modern white suite bathroom with shower over bath and one good sized bedroom with the benefit of fitted wardrobes.

Further benefits include an allocated parking space, double glazing, and electric heating.

Please note:  
An annual household income of £26,250 will be required for the affordability criteria of this property.





**Living Room**

11'10" x 11'6" (3.61m x 3.51m)

**Kitchen**

**Bedroom**

11'2" x 8'0" (3.42m x 2.45m)

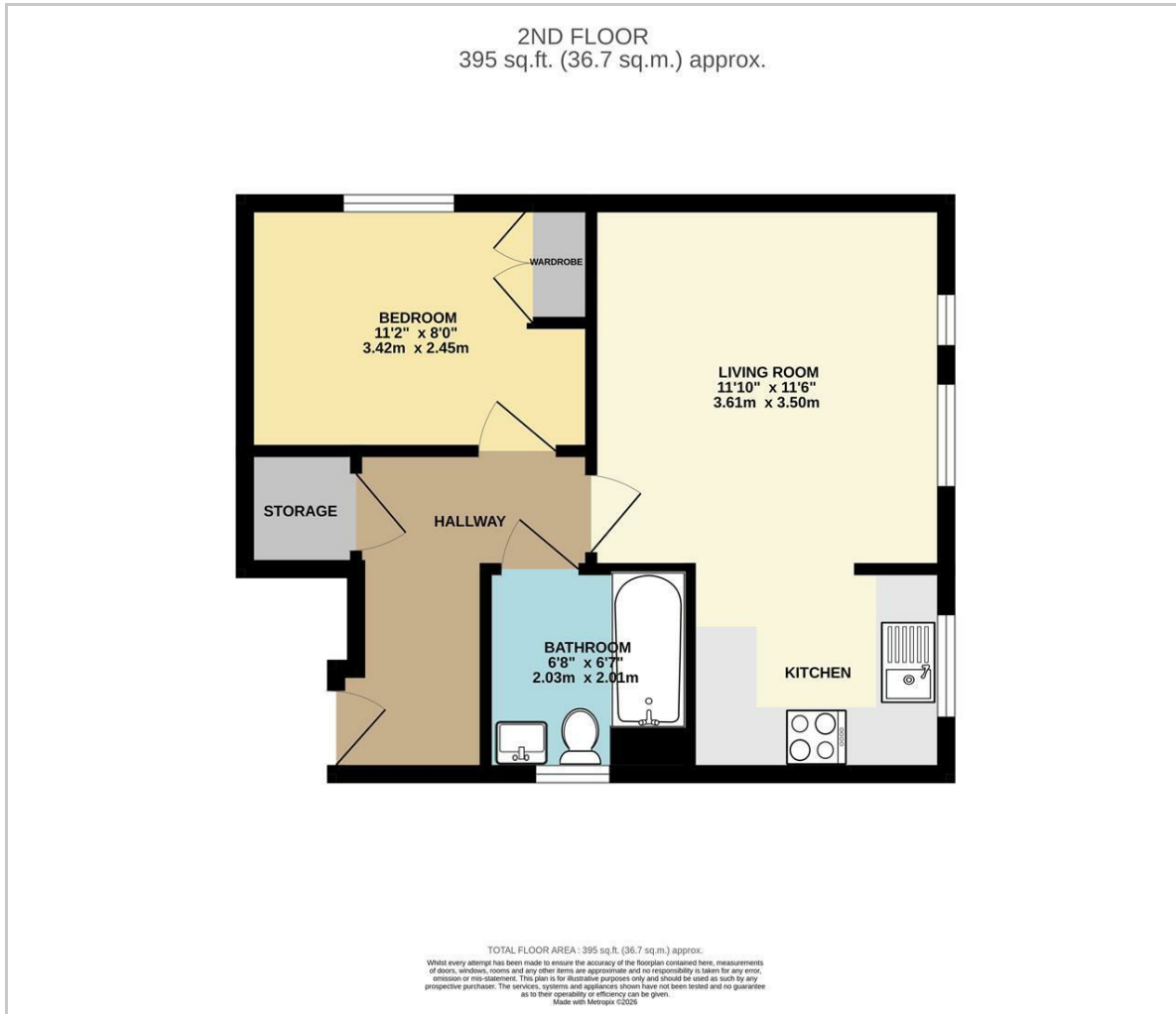
**Bathroom**

6'8" x 6'7" (2.03m x 2.01m)

**Council Tax Band A - £1,802.42 Per annum**



## Floor Plan

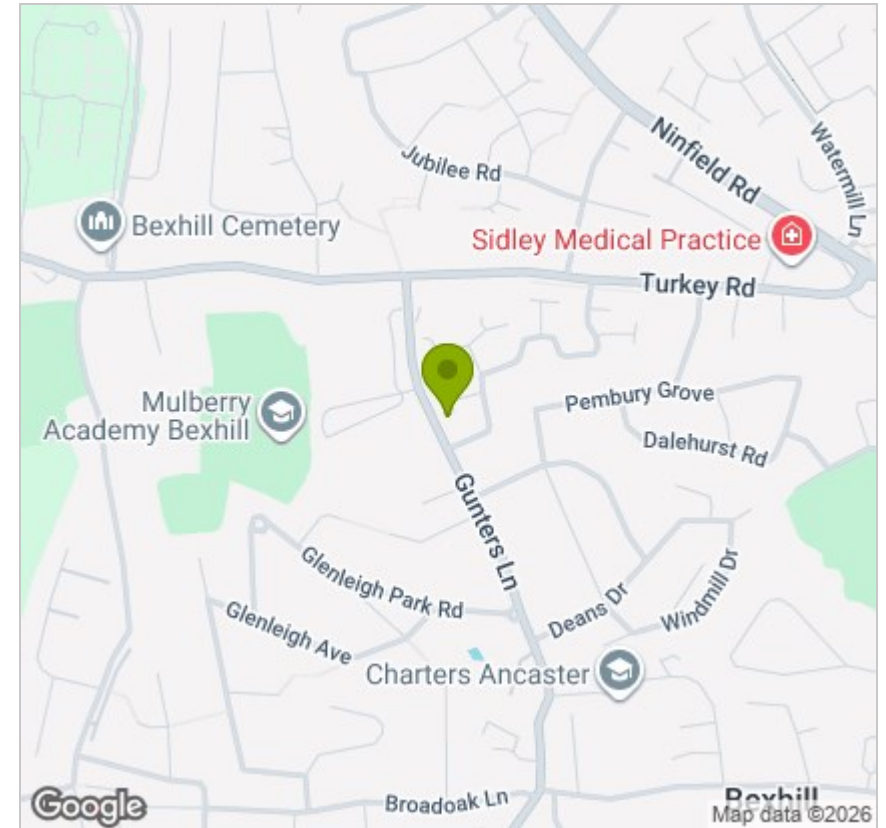


## Viewing

Please contact us on 01424 817075 if you wish to arrange a viewing appointment for this property or require further information.

These particulars, whilst believed to be accurate are set out as a general outline only for guidance and do not constitute any part of an offer or contract. Intending purchasers should not rely on them as statements of representation of fact, but must satisfy themselves by inspection or otherwise as to their accuracy. No person in this firms employment has the authority to make or give any representation or warranty in respect of the property.

## Area Map



## Energy Efficiency Graph

