



307 Feltham Hill Road, Ashford, TW15 1LT

£749,500

## 307 Feltham Hill Road, Ashford, TW15 1LT

No Onward Chain! Set behind a generous frontage, this exceptional three double bedroom, two bathroom detached bungalow has been extended and comprehensively refurbished to an outstanding standard by a renowned local property developer. Finished with meticulous attention to detail throughout, the heart of the home is the stunning open-plan living and kitchen space, designed for modern family living and entertaining. This impressive room boasts underfloor heating, a bespoke luxury media wall, elegant Amtico herringbone flooring, a central sky lantern flooding the space with natural light, and aluminium bi-folding doors opening onto the rear garden. The beautifully appointed kitchen features premium quartz worktops, high-quality cabinetry, integrated Neff appliances, an induction hob with built-in downdraft extractor, while a separate utility room offers a gas supply and hot and cold water connections ready for appliances. The accommodation is completed by three generous double bedrooms, including a superb principal bedroom with luxury en-suite, together with an elegant four-piece family bathroom.

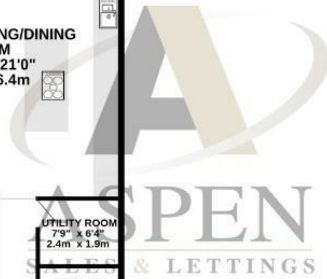
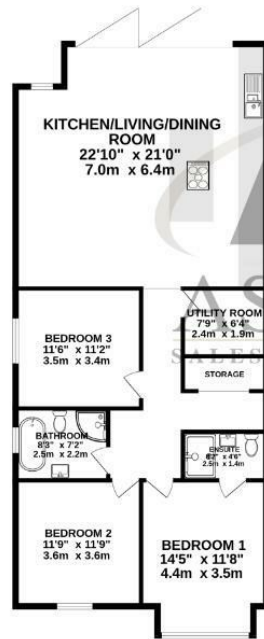
Externally, the property continues to impress with a large private driveway providing ample off-street parking for multiple vehicles. The professionally landscaped rear garden extends to approximately 110ft, creating a wonderful outdoor space for families and entertaining alike. At the far end of the garden sits a substantial and highly versatile 25ft detached outbuilding, ideal as a home office, gym, games room or studio. Combining high-specification finishes, contemporary design and exceptional living space, this truly turnkey home offers a rare opportunity to purchase one of the finest refurbished bungalows available and must be viewed to be fully appreciated. Call Alex White and his market leading sales team at Aspen estate agents.



# Floor Plan

GROUND FLOOR  
1546 sq.ft. (143.6 sq.m.) approx.

**OUTBUILDING/ OFFICE/  
GYM/ GAMES ROOM**  
25'9" x 12'6"  
7.8m x 3.8m  
not in exact location



TOTAL FLOOR AREA: 1546 sq.ft. (143.6 sq.m.) approx.

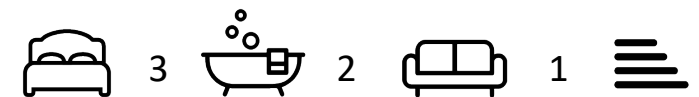
Whilst every attempt has been made to ensure the accuracy of the floorplan contained here, measurements of doors, windows, rooms and any other items are approximate and no responsibility is taken for any error, omission or mis-statement. This plan is for illustrative purposes only and should be used as such by any prospective purchaser. The services, systems and appliances shown have not been tested and no guarantee as to their operability or efficiency can be given.  
Made with Metropix ©2025



## Features

- No onward chain
- Fully refurbished to an outstanding standard by a renowned local property developer
- Luxury fitted kitchen with quartz worktops and integrated Neff appliances
- Separate utility room with gas supply and hot and cold plumbing for appliances
- Versatile 25ft detached outbuilding ideal as a home office, gym, games room or studio
- Exceptional three double bedroom, two bathroom extended detached bungalow
- Stunning open-plan living space with bespoke media wall, underfloor heating
- Aluminium bi-folding doors
- Approximately 110ft professionally landscaped rear garden
- Large private driveway providing off-street parking for multiple vehicles

Aspen Residential Services  
77 Church Road, Ashford, Surrey, TW15 2PE  
Tel: 01784 252 202  
Email: enquiries@aspensalesandlettings.com



Tenure - Freehold Council Tax Band - E

