



Homestead Close
Bristol BS36 2FB

Price:
£1,550 PCM

Property Features

- Modern Semi Detached House
- Three Bedrooms
- Lounge/Dining Room
- Unfurnished
- Available Immediately
- Cloakroom & En-Suite
- Garage
- PETS CONSIDERED

Full Description

ENTRANCE HALL

CLOAKROOM

KITCHEN
9'3" x 8'11"

LOUNGE DINER
16'5" x 12'3"

LANDING

BEDROOM ONE
10'11" x 9'3"

EN-SUITE

BEDROOM TWO
9'3" x 9'2"

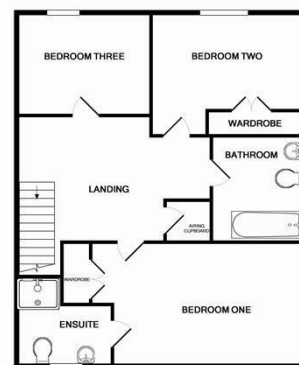
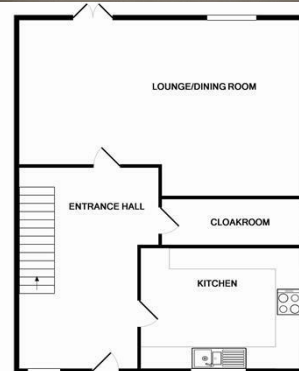
BEDROOM THREE
7'5" x 6'2"

BATHROOM

REAR GARDEN

FRONT

GARAGE



Whilst every attempt has been made to ensure the accuracy of the floor plan contained here, measurements of doors, windows, rooms and any other items are approximate and no responsibility is taken for any error, omission, or mis-statement. This plan is for illustrative purposes only and should be used as such by any prospective purchaser. The services, systems and appliances shown have not been tested and no guarantee as to their operability or efficiency can be given.
Made with Metropix 10210

4 Flaxpits Lane
Winterbourne
Bristol
BS36 1JX

www.aj-homes.co.uk
info@aj-homes.co.uk
01454 252140

Agents Note: Whilst every care has been taken to prepare these sales particulars, they are for guidance purposes only. All measurements are approximate and for general guidance purposes only and whilst every care has been taken to ensure their accuracy, they should not be relied upon and potential buyers are advised to recheck the measurements