



Blacksmith Close, TW16

£679,950

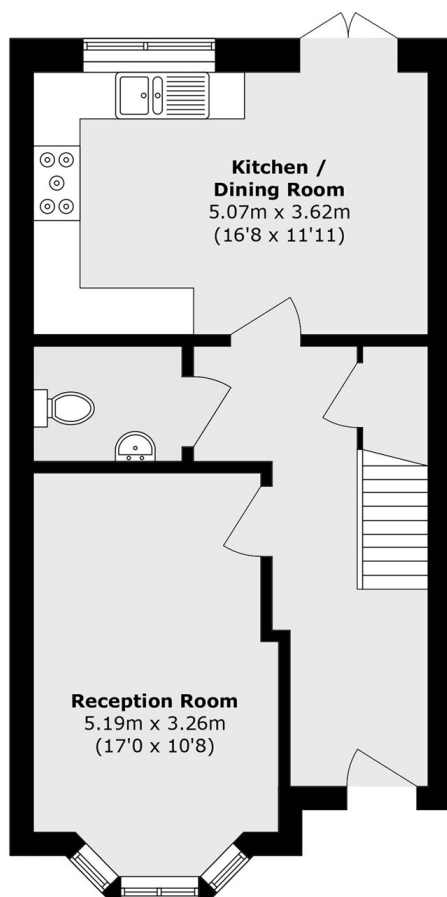
A modern three bedroom, two bathroom semi-detached house with off-street parking and a beautiful landscaped rear garden. This spacious family home is smartly presented throughout and you will just need to unpack to start enjoying your new home.

Blacksmith Close is a private gated development located off Green Street. The River Thames and Sunbury Park are both close by. Sunbury Station, which provides a direct service into Waterloo, is under a mile away.

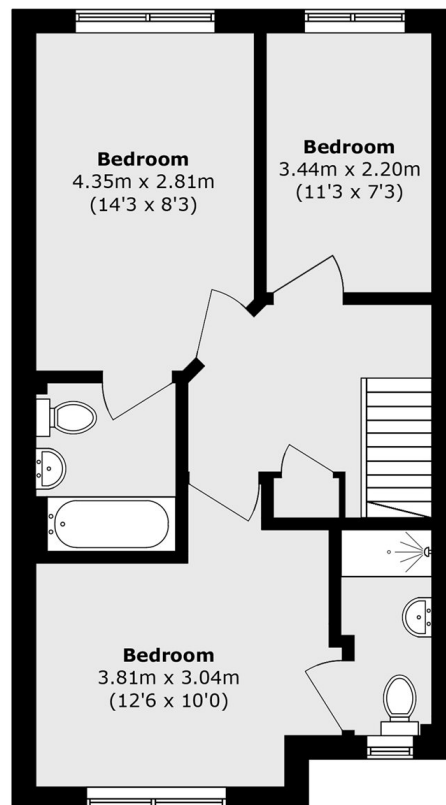
Features

- Semi-Detached
- Three Bedrooms
- Two Bathrooms
- Landscaped Rear Garden
- Off-Street Parking
- Gated Development

Blacksmith Close, Sunbury-On-Thames, TW16



Ground Floor



First Floor

Total area (approx.): 98.1 sq. m (1055.9 sq. ft)